



W WESTWOODLEBER

**W WESTWOODLEBER**  
LET US GUIDE YOU HOME

Ware Road, Hoddesdon, EN11 9AF  
£1,150,000



## Ware Road, Hoddesdon, EN11 9AF

Westwood Leber are delighted to bring to the market this well-presented four-bedroom detached family home with original character features set back on this popular residential road in Hoddesdon. This property offers fantastic living accommodation throughout comprising a large family lounge, a separate dining room, and an open kitchen with a utility room off of it. This property also boasts a fantastic sized loft and precedent has been set for a loft extension in the area. Further benefits include three-double-bedrooms, an ensuite off the master bedroom, a separate playroom/study, a downstairs w/c, a larger than average three-piece family bathroom, a well-sized basement, a garage, a large and well-maintained rear garden, and a drive to the front offering off-street parking. An internal viewing is highly recommended!

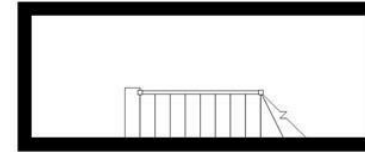


**W WESTWOODLEBER**

**W WESTWOODLEBER**  
LET US GUIDE YOU HOME

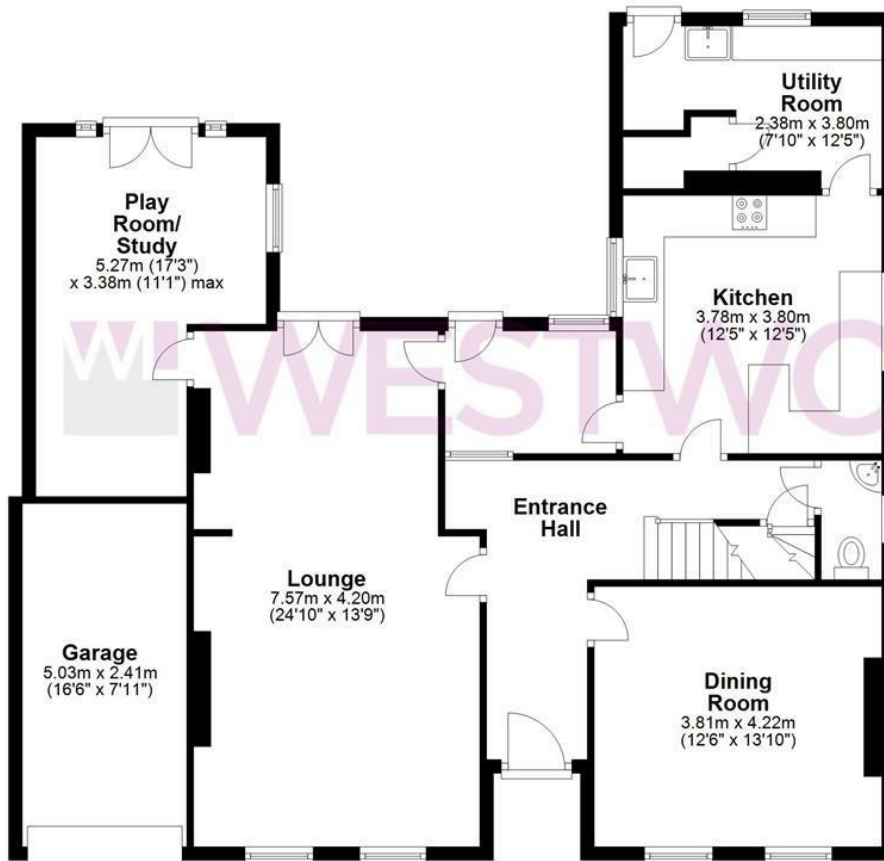
### Basement

Approx. 8.8 sq. metres (94.5 sq. feet)



### Ground Floor

Approx. 119.2 sq. metres (1283.0 sq. feet)



### First Floor

Approx. 83.8 sq. metres (902.2 sq. feet)



Total area: approx. 211.8 sq. metres (2279.6 sq. feet)

FOR ILLUSTRATIVE PURPOSES ONLY. NOT TO SCALE. Whilst every attempt had been made to ensure the accuracy of the floor plan shown, all measurements, positioning, fixtures, features, fittings and any other data shown are an approximate interpretation for illustrative purposes only and are not to scale. No responsibility is taken for any error, omission, miss-statement or use of data shown. Property marketing provided by Foto Ltd.  
Plan produced using PlanUp.







WESTWOODLEBER



WESTWOODLEBER



WESTWOODLEBER



WESTWOODLEBER







