



WESTWOODLEBER

WESTWOODLEBER
LET US GUIDE YOU HOME

Howfield Green, Hoddesdon, EN11 9AL

£750,000



Howfield Green, Hoddesdon, EN11 9AL

Westwood Leber are delighted to bring to the market this deceptively spacious four bedroom detached house located on this highly sought after cul-de-sac within the popular Roselands Development. The property offers excellent accommodation throughout comprising four double bedrooms on the first floor, one ensuite shower room, separate family bathroom, ground floor w/c, three reception rooms and an integral double garage. Externally the property benefits from a private well sized rear garden and excellent off street parking to the front.

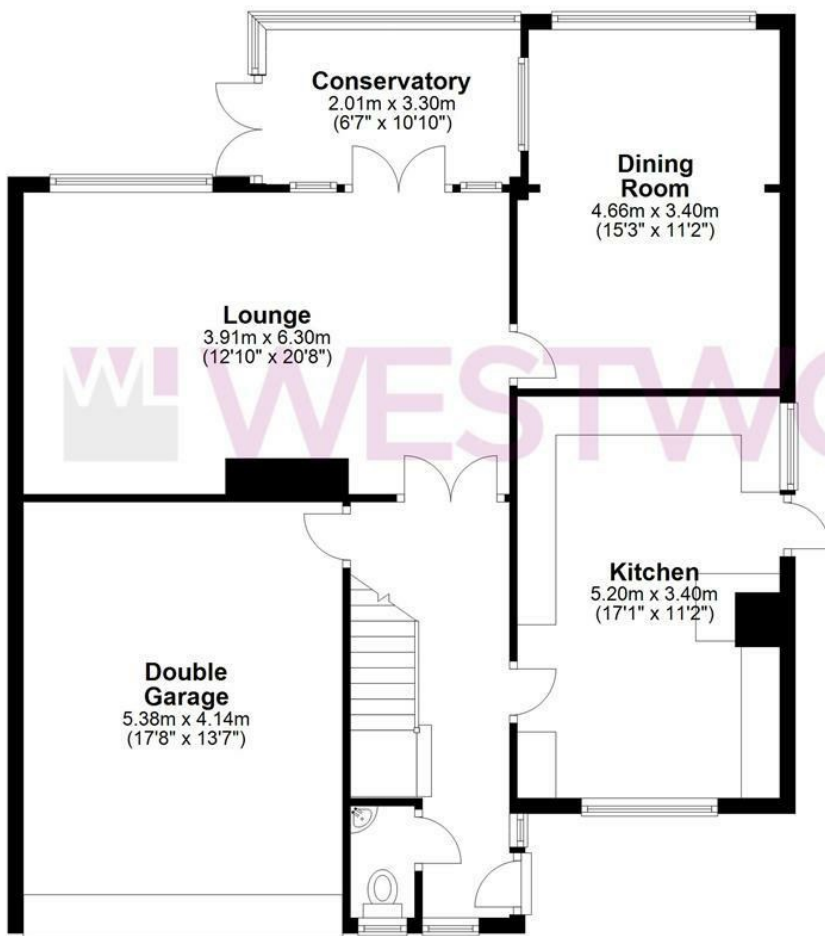


WESTWOODLEBER

WESTWOODLEBER
LET US GUIDE YOU HOME

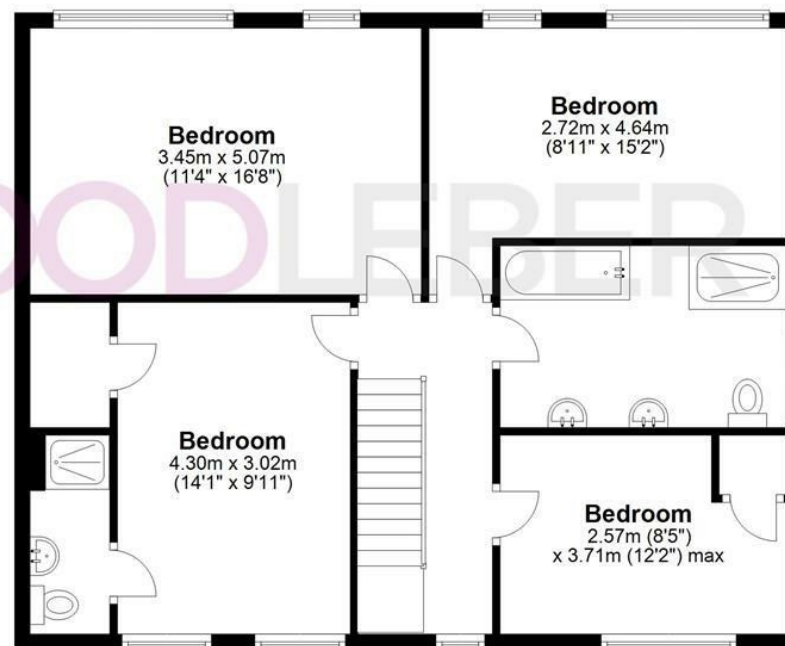
Ground Floor

Approx. 100.7 sq. metres (1084.1 sq. feet)



First Floor

Approx. 76.7 sq. metres (825.3 sq. feet)



Total area: approx. 177.4 sq. metres (1909.5 sq. feet)

FOR ILLUSTRATIVE PURPOSES ONLY. NOT TO SCALE. Whilst every attempt had been made to ensure the accuracy of the floor plan shown, all measurements, positioning, fixtures, features, fittings and any other data shown are an approximate interpretation for illustrative purposes only and are not to scale. No responsibility is taken for any error, omission, miss-statement or use of data shown. Property marketing provided by Westwood Leber.
Plan produced using PlanUp.









