





## Trinity Road, Hertford Heath, Hertford, SG13 7QR

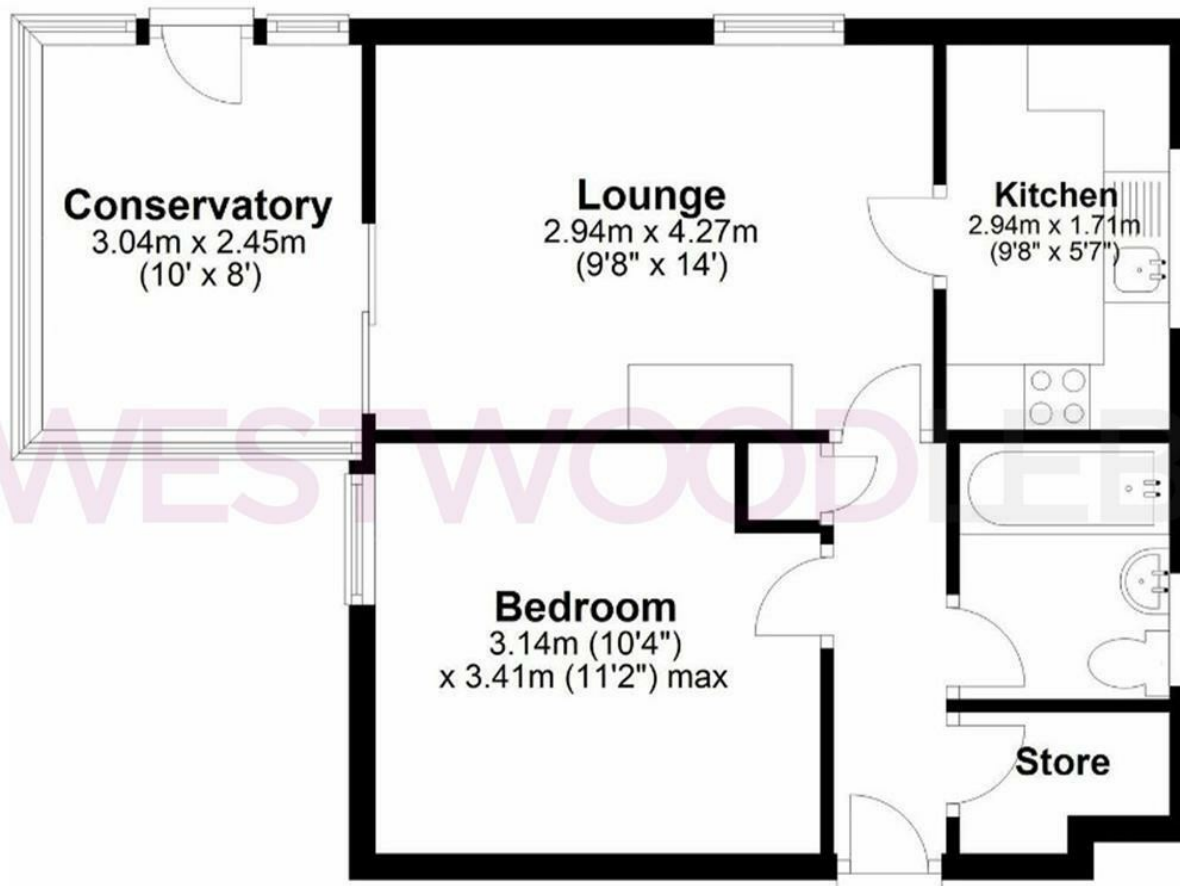
**\*\* CHAIN FREE \*\*** Westwood Leber are delighted to bring to the market this well-presented one-bedroom ground-floor apartment in the sought-after village of Hertford Heath. This property benefits from a private rear garden, side access, fitted kitchen and bathroom, a bright and airy conservatory, and ample on-street parking. An internal viewing is highly recommended!



 WESTWOODLEBER

## Ground Floor

Approx. 44.8 sq. metres (482.6 sq. feet)



Total area: approx. 44.8 sq. metres (482.6 sq. feet)

Floor Plan measurements are approximate & for illustrative purposes only. While we do not doubt the floor plans accuracy, we make no guarantee, warranty or representation as to the accuracy and completeness of the floor plan.  
Plan produced using PlanUp.

