



WV WESTWOODLEBER

**WV WESTWOODLEBER**  
LET US GUIDE YOU HOME

Dig Dag Hill, Cheshunt, Waltham Cross, EN7 6NS  
£700,000



## Dig Dag Hill, Cheshunt, Waltham Cross, EN7 6NS

\*\*\* OFFERED CHAIN FREE \*\*\* Westwood Leber are delighted to offer this immaculately presented four/five bedroom semi-detached family home situated to the West of Cheshunt, close to Brookfield shopping Centre. This well extended family home has been re-designed and renovated to a great specification throughout offering contemporary living whilst still retaining a wealth of character features. The generously proportioned accommodation includes a large kitchen/ diner with underfloor heating leading out to a beautifully landscaped rear garden, four-piece bathroom suite, en-suite shower room to master, a downstairs w/c, separate study perfect for working from home, parquet flooring throughout, and gated rear access with parking for 3/4 cars into the garden. An internal viewing is highly recommended!

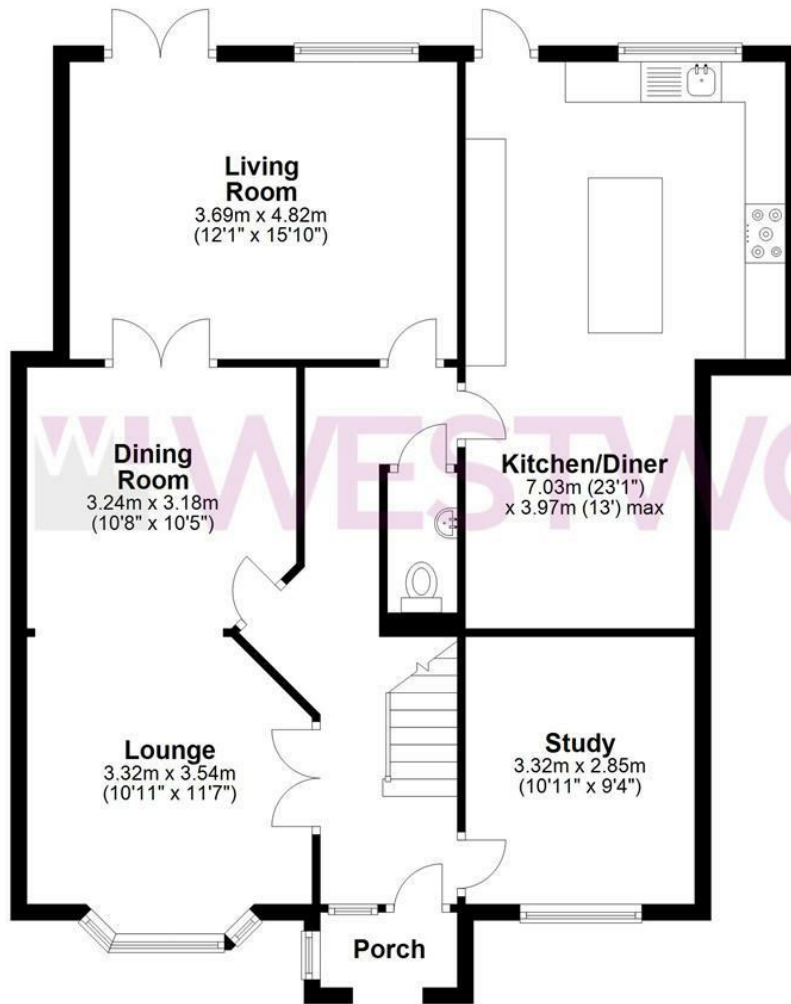


 WESTWOODLEBER

 WESTWOODLEBER  
LET US GUIDE YOU HOME

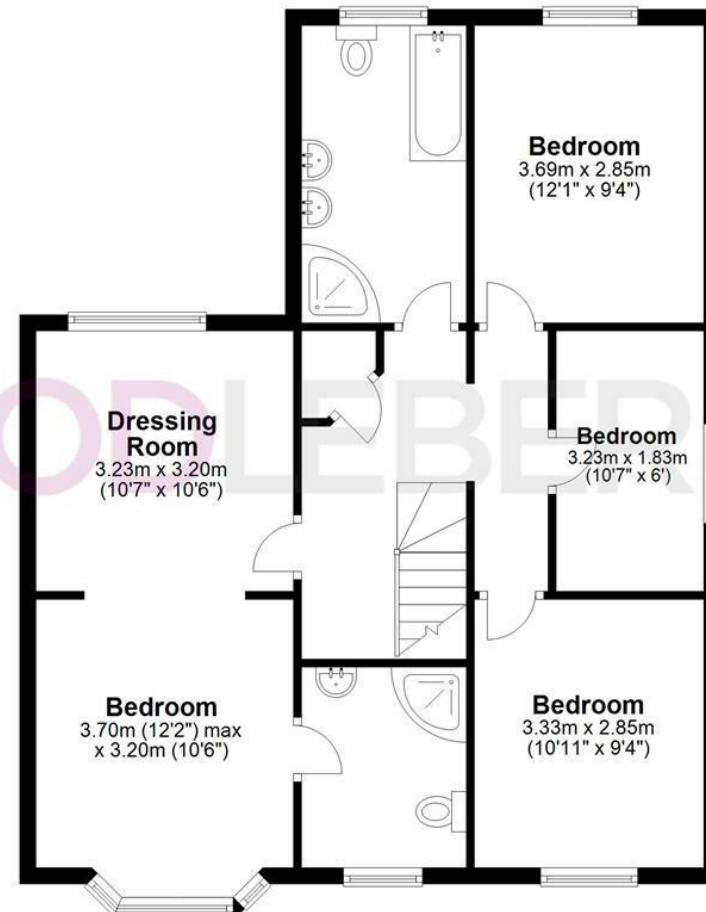
## Ground Floor

Approx. 91.1 sq. metres (980.9 sq. feet)



## First Floor

Approx. 74.7 sq. metres (804.6 sq. feet)



Total area: approx. 165.9 sq. metres (1785.5 sq. feet)

FOR ILLUSTRATIVE PURPOSES ONLY. NOT TO SCALE. Whilst every attempt had been made to ensure the accuracy of the floor plan shown, all measurements, positioning, fixtures, features, fittings and any other data shown are an approximate interpretation for illustrative purposes only and are not to scale. No responsibility is taken for any error, omission, miss-statement or use of data shown. Property marketing provided by Westwood Leber.  
Plan produced using PlanUp.









WESTWOODLEBER



WESTWOODLEBER



WESTWOODLEBER



WESTWOODLEBER





WESTWOODLEBER



WESTWOODLEBER



WESTWOODLEBER



WESTWOODLEBER

