



WILWESTWOODLEBER

WESTWOODLEBER
LET US GUIDE YOU HOME

Cromwell Avenue, Cheshunt, Waltham Cross, EN7 5DJ
£425,000



Cromwell Avenue, Cheshunt, Waltham Cross, EN7 5DJ

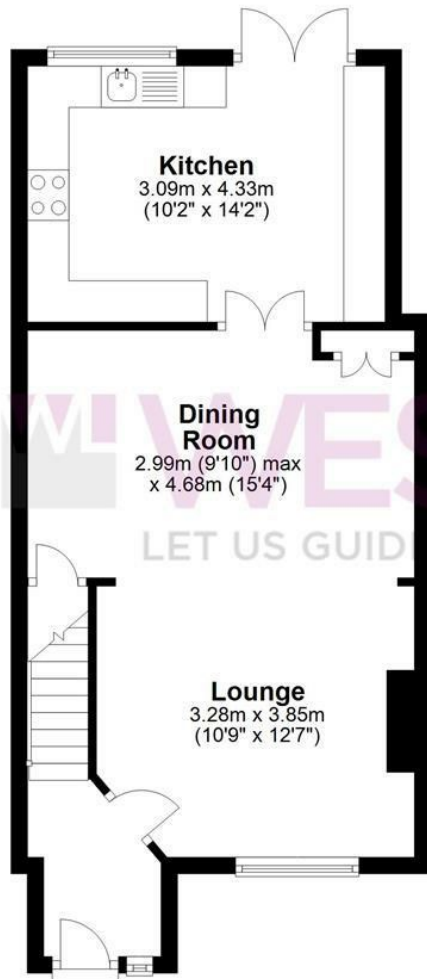
Westwood Leber are delighted to bring to the market this three bedroom family home located perfectly in the heart of Cheshunt. This property offers fantastic living accommodation throughout comprising of a large lounge/ diner leading to a separate kitchen/ breakfast room. Further benefits include three good sized bedrooms, front driveway, well sized rear garden and easy access to the A10 and M25 offering fantastic routes to surrounding areas. An internal viewing is highly recommended!



WESTWOODLEBER

Ground Floor

Approx. 45.3 sq. metres (487.9 sq. feet)



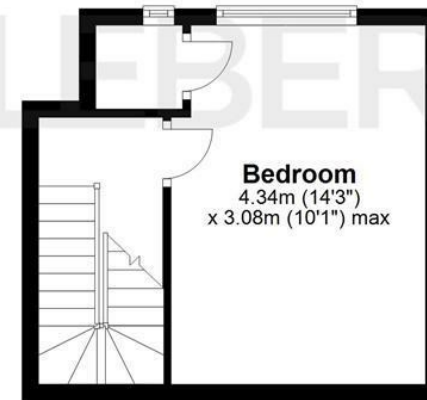
First Floor

Approx. 31.5 sq. metres (338.6 sq. feet)



Second Floor

Approx. 19.5 sq. metres (210.4 sq. feet)



Total area: approx. 96.3 sq. metres (1036.9 sq. feet)

FOR ILLUSTRATIVE PURPOSES ONLY. NOT TO SCALE. Whilst every attempt had been made to ensure the accuracy of the floor plan shown, all measurements, positioning, fixtures, features, fittings and any other data shown are an approximate interpretation for illustrative purposes only and are not to scale. No responsibility is taken for any error, omission, miss-statement or use of data shown. Property marketing provided by Westwood Leber. Plan produced using PlanUp.





WESTWOODLEBER



WESTWOODLEBER



WESTWOODLEBER



WESTWOODLEBER



WESTWOODLEBER



WESTWOODLEBER



WESTWOODLEBER



WESTWOODLEBER

