



QUEENS GATE MEWS, LONDON, SW7

QUEENS GATE MEWS, LONDON, SW7

An unusual mews house with a timeless exterior whilst offering a contemporary and industrial chic interior. Situated in one of South Kensington's most desired areas, the house features cleverly conceived open place space and benefits from a garage and partial air conditioning.

The property is located at the favoured north end of this popular cobbled mews, with an east/west aspect and is a short walk from the shops, boutiques and restaurants on Gloucester Road, High Street Kensington and Old Brompton Road. Also within an easy stroll are the numerous landmarks such as Hyde Park, Kensington Gardens, The Royal Albert Hall, a host of world class museums and Harrods. The nearest underground station is Gloucester Road for Circle, District and Piccadilly lines.

Entrance Hall • Open Plan Reception Room • Kitchen/Dining Room • Sitting Room • Two Bedrooms with En suite Bathrooms • Utility Room • Wine Cellar • Balcony • Partial air conditioning • Large Garage • EPC Rating D

TERMS

Tenure: Freehold

Local Authority: Royal Borough of Kensington and Chelsea

Price: £3,250,000 subject to contract





GROSS INTERNAL AREA

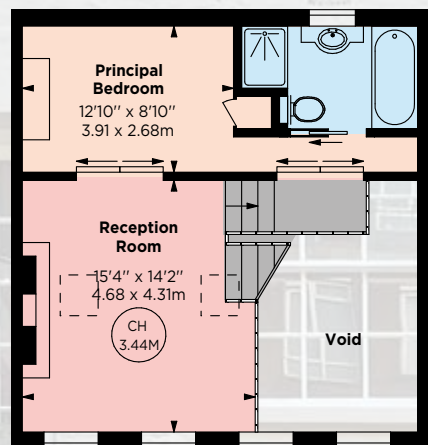
1,824 sq ft (169.45 sq m)

(Excluding Void)

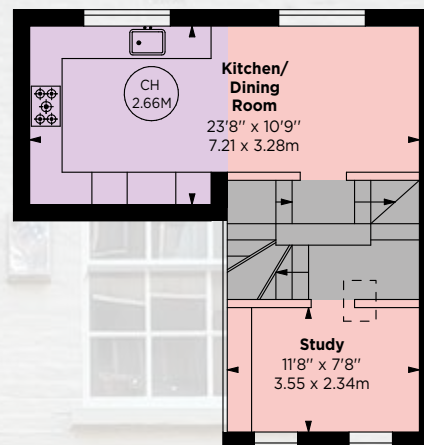
For identification purposes only.

Key :
CH - Ceiling Height
▨ - Under 1.5m

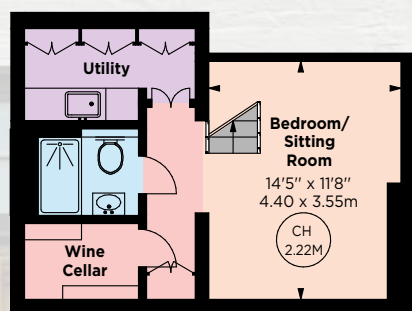
2



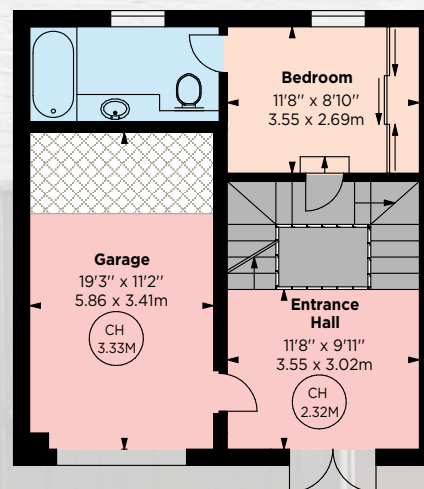
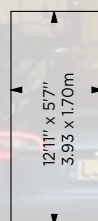
FIRST FLOOR
HALF LANDING



FIRST FLOOR



LOWER GROUND FLOOR



GROUND FLOOR

Rose&Partners

PROPERTY SPECIALISTS

020 3838 8366

srose@roseandpartners.co.uk
roseandpartners.co.uk

MICHELIN HOUSE, 81 FULHAM RD, LONDON SW3 6RD

R&P Disclaimer

Important Notice: This brochure, the descriptions and measurements herein do not constitute representation and whilst every effort has been made to ensure accuracy, this cannot be guaranteed, nor do they form part of any contract. Please note that we have not carried out a detailed survey nor tested the services, appliances or any specific fittings. Brochure prepared January 2022