



LIMERSTON STREET, LONDON, SW10



LIMERSTON STREET, LONDON, SW10

A beautifully presented four bedroom Chelsea town house situated on the highly desirable Ten Acre Estate. This family house has been much improved by the current owners and offers excellent entertaining space with three reception rooms. Of particular note is the elegant drawing room which gives access to the terrace, leading onto the landscaped rear garden.

The property is situated on the eastern side of this popular residential road running between the Fulham Road and Kings Road and is, therefore, within easy walking distance of the many shops and restaurants that the local area has to offer.

Entrance hall · Reception room · Large Kitchen/Dining Room · Study | Principal bedroom with en suite bathroom · Three further bedrooms · Bathroom · Shower room · Utility room · Terrace · Rear Garden · EPC Rating D

TERMS

Tenure: Freehold

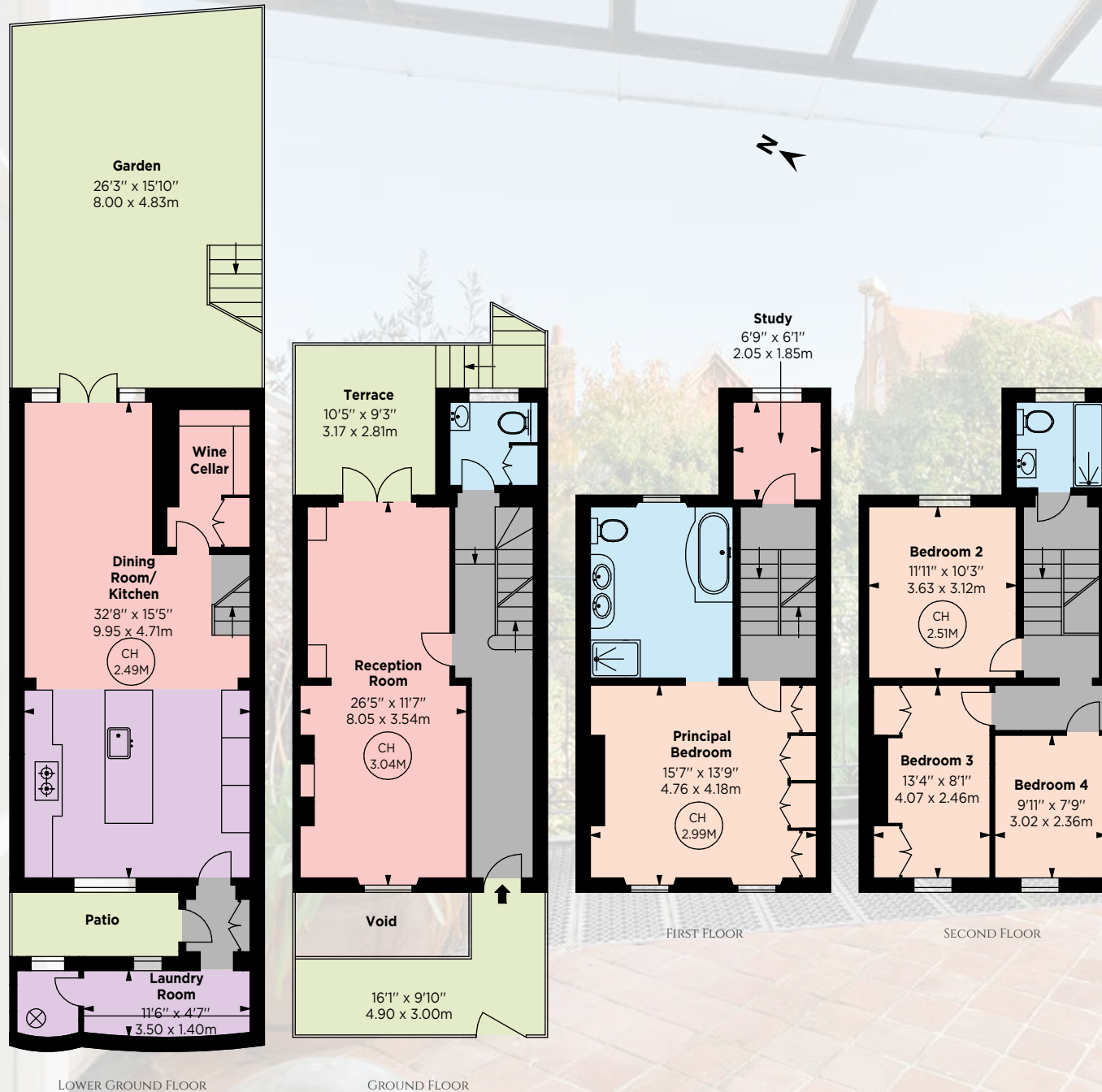
Local Authority: The Royal Borough of Kensington and Chelsea

Price: £3,950,000 Subject to Contract





GROSS INTERNAL AREA
 1,961 sq ft (182.18 sq m)
 For identification purposes only.



R&P Disclaimer
 Important Notice: This brochure, the descriptions and measurements herein do not constitute representation and whilst every effort has been made to ensure accuracy, this cannot be guaranteed, nor do they form part of any contract. Please note that we have not carried out a detailed survey nor tested the services, appliances or any specific fittings. Brochure prepared November 2021

Rose & Partners

PROPERTY SPECIALISTS

020 3838 8366

srose@roseandpartners.co.uk
 roseandpartners.co.uk

MICHELIN HOUSE, 81 FULHAM RD, LONDON SW3 6RD