



WASHINGTON HOUSE, BASIL STREET, LONDON, SW3



## WASHINGTON HOUSE, BASIL STREET, LONDON, SW3

A special three bedroom penthouse apartment with a secluded private terrace in a portered mansion block in the heart of Knightsbridge. Entered on the fifth floor (with lift) this sumptuous home offers a spacious entrance with vaulted ceilings and an office area, a double south facing reception room/dining room with double doors leading to an ornamental balcony, a modern kitchen with a breakfast table and balcony. All three double bedrooms provide en suite bathrooms or shower room, with the master bedroom being located on the sixth floor which leads onto a private roof terrace.

Washington House is situated on the north side of Basil Street, ideally located between Harrods and Harvey Nichols, with a wealth of world class flagship shops, restaurants and hotels close by and Knightsbridge underground (Piccadilly Line) is just around the corner.

Entrance Hall/Study · Reception Room/Dining Room · Kitchen/Dining Room · Master Bedroom with en suite Bathroom · Two further bedrooms with en suites · Store Room · Lift · Porter · Roof Terrace · EPC Rating E

### TERMS

**Tenure:** Leasehold, expiring 26th September 2142, therefore having 120 years unexpired

**Service Charge:** TBA

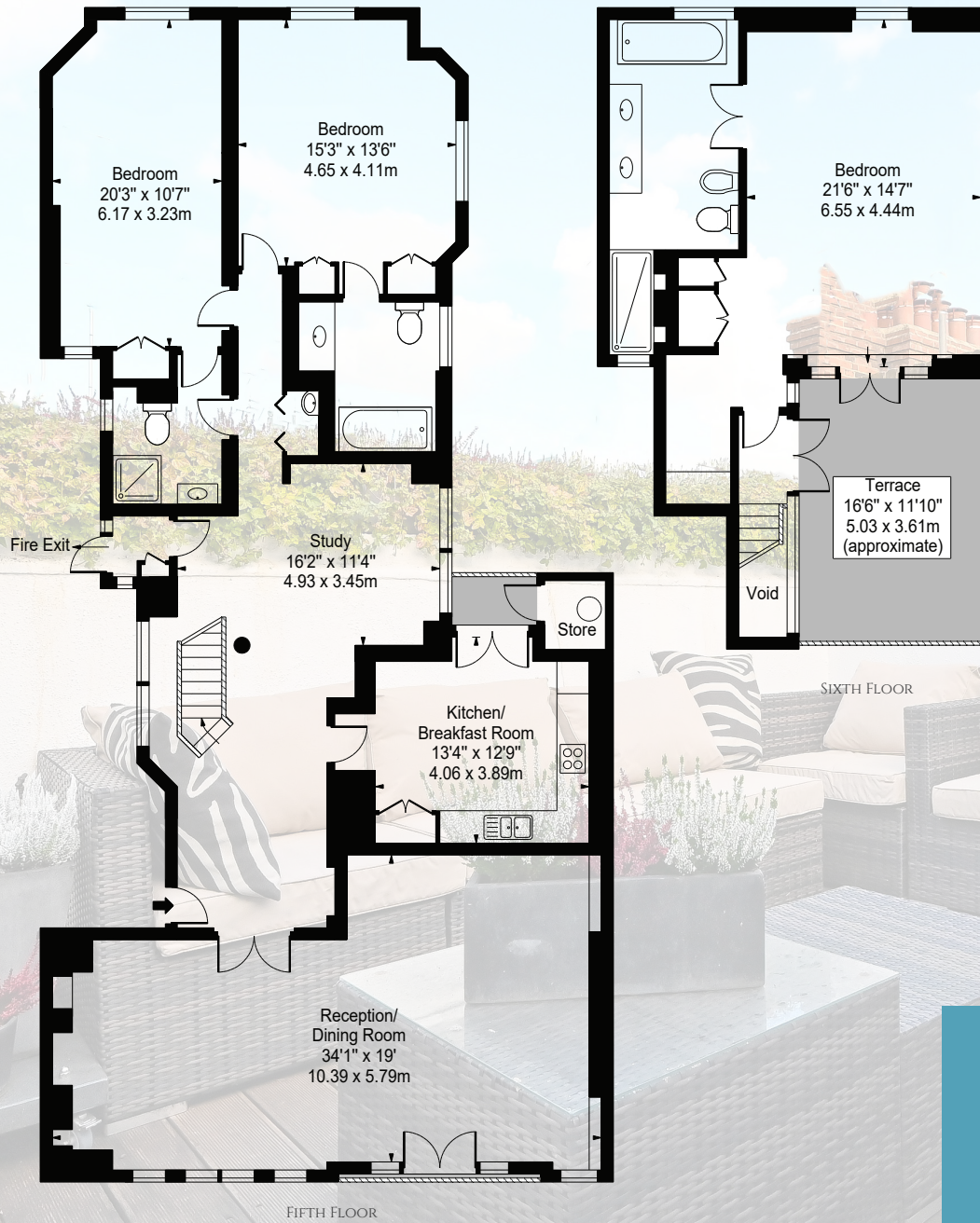
**Ground Rent:** TBA

**Local Authority:** Royal Borough of Kensington & Chelsea

**Price:** £6,500,000 subject to contract







GROSS INTERNAL AREA  
 2,331 sq ft (216.56 sq m)  
 Excluding Void and Store  
 Approx. Gross Internal Area Of Store  
 16 sq ft (1.49 sq m)  
 For identification purposes only.

**Rose & Partners**  
 PROPERTY SPECIALISTS

020 3838 8366

[srose@roseandpartners.co.uk](mailto:srose@roseandpartners.co.uk)  
[roseandpartners.co.uk](http://roseandpartners.co.uk)

MICHELIN HOUSE, 81 FULHAM RD, LONDON SW3 6RD

**R&P Disclaimer**  
 Important Notice: This brochure, the descriptions and measurements herein do not constitute representation and whilst every effort has been made to ensure accuracy, this cannot be guaranteed, nor do they form part of any contract. Please note that we have not carried out a detailed survey nor tested the services, appliances or any specific fittings. Brochure prepared November 2021.