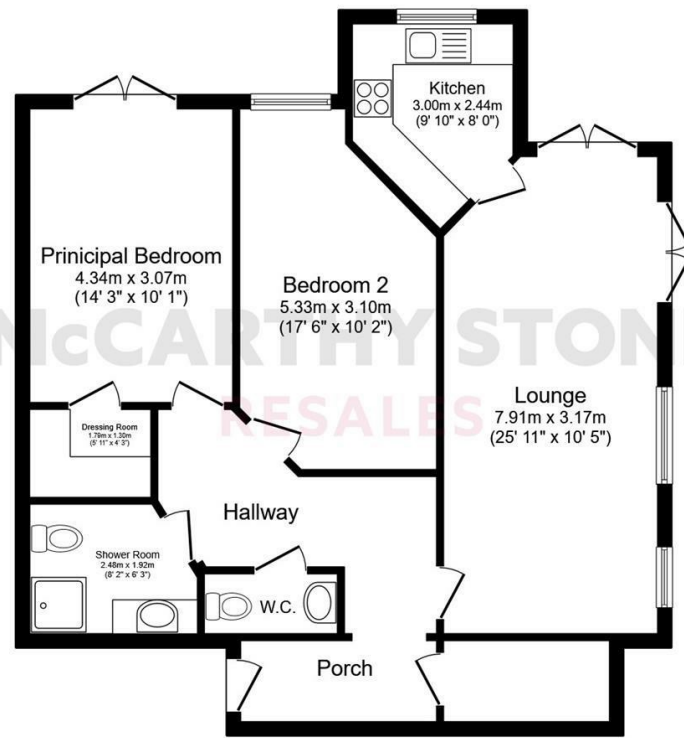


McCARTHY STONE RESALES

6 THORNEYCROFT WOOD ROAD, WOLVERHAMPTON, WV6 8PR



Total floor area 80.6 sq.m. (867 sq.ft.) approx

Printed Contact Details...

This plan is for illustration purposes only and may not be representative of the property. Plan not to scale.

Powered by focalagent.com

COUNCIL TAX BAND: E



Energy Efficiency Rating		
	Current	Potential
Very energy efficient - lower running costs		
(92 plus) A		
(81-91) B	82	82
(69-80) C		
(55-68) D		
(39-54) E		
(21-38) F		
(1-20) G		
Not energy efficient - higher running costs		



McCARTHY STONE RESALES

This floor plan is not drawn to scale and is for illustrative purposes only. Any measurements, floor areas (including any total floor area), openings and orientation are approximate and for guidance only. McCarthy Stone Resales do not take liability for any error, omission or misstatement. All parties must rely on their own inspections. It should not be assumed that any furniture or fittings contained in the photographs are included in any sale. All details referring to time and distances to localities are approximate. Details regarding any common charges and other applicable fees are provided by the seller and should not be relied on without verification and further checks made through a solicitor/conveyancer. Please contact the Property Consultant for further information that Appliances (including central heating) have not been tested, therefore it cannot be assumed that they are in good working order. All interested parties are advised to check availability and make an appointment before travelling to view the property to avoid disappointment or wasted time or travel expenses. The details contained within this brochure are for information purposes only and do not form part of any agreement. All purchases will be subject to contract terms. © All artwork (photos and floorplans) and written content are the sole property and copyright of McCarthy & Stone Resales Limited and are legally protected by UK & International copyright laws. Under no circumstance may you download, reproduce, publish or distribute any content for commercial purposes, without prior written permission from McCarthy Stone Resales. Unauthorised duplication or usage for commercial purposes is prohibited by the Copyright law and will be prosecuted.



A luxury TWO BEDROOM retirement apartment. Situated on the GROUND FLOOR in our prestigious THORNEYCROFT development. Further benefits include SHOWER ROOM AND GUEST WC. TWO Walk out PATIOS from the living room and master bedroom. Modern fitted kitchen with integrated appliances.

OFFERS IN THE REGION OF £300,000

For further details, please call **0345 556 4104**

resales@mccarthyandstone.co.uk | mccarthyandstoneresales.co.uk

THORNEYCROFT, WOOD ROAD, TETTENHALL, WOLVERHAMPTON, WEST

MIDLANDS W14 0DD

THORNEYCROFT

Thorneycroft, is a stunning development exclusively for the over 70's, made up of one and two bedroom apartments. Part of our Retirement Living PLUS range (formally Assisted Living) this development is facilitated to provide its homeowners' with extra support if and when needed.

An Estate's Manager is on hand to manage the day to day running of the development and attend to any queries you may have. Within the service charge homeowners are allocated 1 hour's domestic assistance per week, however, additional hours can be arranged by prior appointment. There are a range of personal care packages to suit your requirements - these are provided by the onsite CQC registered care team.

For your reassurance the development has 24-Hour on-site staffing, secure camera entry systems and 24-Hour emergency call system provided by a personal pendant with static call points in bathroom and main bedroom. The development has a homeowners' lounge which is a superb venue for socialising with friends and family. If your guests have travelled from afar, they can extend their stay by booking into the development Guest Suite (usually for a fee of £25 per night - subject to availability)

Just 2 1/2 miles from Wolverhampton city centre, this development is located in the desirable village of Tettenhall, west of Wolverhampton City Centre. Thorneycroft features 29 modern one bedroom apartments and 28 two bedroom apartments within close proximity of the village green.

Homeowners can enjoy the landscaped gardens, on-site bistro and homeowners' lounge. There is also a 24-hour emergency call system and the fully trained onsite care team are on hand around the clock in case you need anything.

The village itself has all the facilities you need, including a Co-op, hairdresser, butcher, delicatessen, artisan bakery, and a good selection of restaurants. A regular bus service runs from right outside the entrance and can take you into the city centre. In the centre of Tettenhall, you'll find a larger variety of amenities so you can spend your free time exactly how you want to.

ENTRANCE HALLWAY

Front door with spy hole leads to the entrance hall. From the hallway there is a door to a walk-in airing cupboard. The 24-hour Tunstall emergency response pull cord system, Illuminated light switches, smoke detector and apartment security door entry system with intercom are situated here. Door to cloakroom with WC and wash hand basin. All other doors lead to the living room, both bedrooms, shower room and an additional storage cupboard.

LIVING ROOM

This living room is complimented by double glazed French doors which give access to a walk-out patio area, additional window offering lots of natural light. Telephone point. TV point (with Sky/Sky+ capabilities). Power sockets. Oak effect feature door with glazed panels lead into a separate kitchen.

KITCHEN

A modern fitted kitchen with a range of high gloss base and wall units. UPVC double glazed window sits above a single sink unit with drainer and mixer tap. Integrated electric oven and ceramic four ringed hob with extractor hood above. Integral fridge and freezer. Tiled floor.

BEDROOM ONE

Double bedroom with a large walk-in wardrobe with shelving and rail. Ceiling lights, TV and phone point. Emergency response pull cord. Having French doors opening out to a further patio area.

BEDROOM TWO

A good sized second double bedroom with double glazed window. Central ceiling light fitting. TV point. Power sockets.

SHOWER ROOM

Full wet room with slip resistant flooring, tiled walls and fitted with suite comprising of level access shower, low level WC, vanity unit with wash basin and mirror above. Emergency pull cord.

GUEST WC

Comprising of a wall hung wash hand basin and low level WC

2 BED | £300,000

SERVICE CHARGE DETAILS

- 24-Hour on-site staffing
- Subsidised meal costs
- 1 hours domestic assistance per week
- Cleaning of communal windows
- Water rates for communal areas and apartments
- Electricity, heating, lighting and power to communal areas
- 24 hour emergency call system
- Upkeep of gardens and grounds
- Repairs and maintenance to the interior and exterior communal areas
- Contingency fund including internal and external redecoration of communal areas
- Buildings insurance

The Service charge does not cover external costs such as your Council Tax, electricity or TV. To find out more about the service charges please please contact your Property Consultant or Estate Manager.

Service charge: £11,286.24 per annum (for financial year end 30/06/2024)

OWNERSHIP DETAILS

Ground Rent Annual fee - £510 reviewed 06/2032
lease term 999 years from the 01/06/2017

PARKING

Parking is by allocated space subject to availability. The fee is usually £250 per annum, but may vary by development. Permits are available on a first come, first served basis. Please check with the House Manager on site for availability.

ADDITIONAL INFORMATION & SERVICES

- Ultrafast Full Fibre Broadband available
- Mains water and electricity
- Electric room heating
- Mains drainage

