

7 Island View

Shortwood Copse Lane, Basingstoke, RG23 7GU



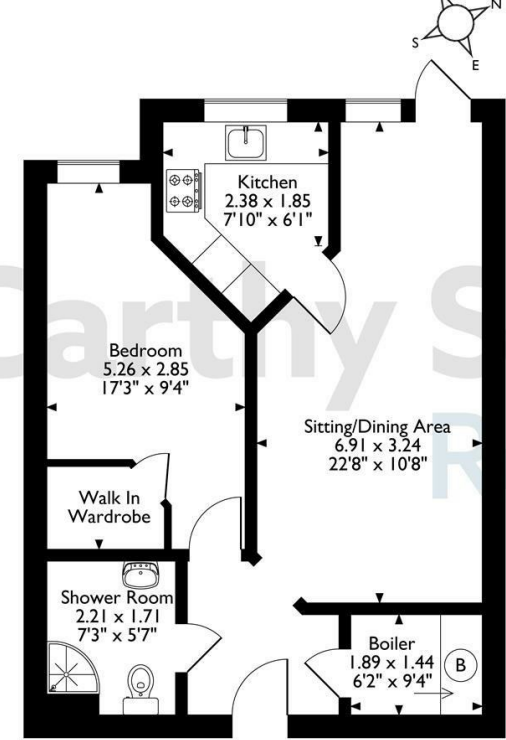
Asking price £310,000 Leasehold

A VERY WELL PRESENTED apartment situated on the GROUND FLOOR of the popular McCarthy Stone Retirement Living development, Island View. The apartment boasts a MODERN KITCHEN, CONTEMPORARY SHOWER ROOM, and a spacious through Lounge Dining room benefitting from having DIRECT ACCESS to a PATIO SEATING AREA and the COMMUNAL GARDENS BEYOND.

Call us on 0345 556 4104 to find out more.

resales@mccarthyandstone.co.uk | mccarthyandstoneresales.co.uk

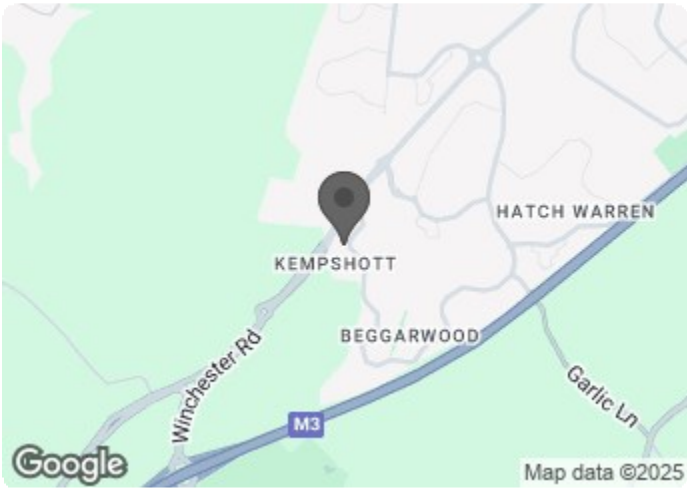
7 Island View, Shortwood Copse Lane, Basingstoke, Hampshire  
Approximate Gross Internal Area  
52 Sq M/560 Sq Ft



Ground Floor

The position & size of doors, windows, appliances and other features are approximate only.  
© ehouse. Unauthorised reproduction prohibited. Drawing ref: dg9639768/D31.

Council Tax Band: C



Energy Efficiency Rating		
	Current	Potential
Very energy efficient - lower running costs		
(92 plus) A	87	87
(81-91) B		
(69-80) C		
(55-68) D		
(39-54) E		
(21-38) F		
(1-20) G		
Not energy efficient - higher running costs		
England & Wales		EU Directive 2002/91/EC

This floor plan is not drawn to scale and is for illustrative purposes only. Any measurements, floor areas (including any total floor area), openings and orientation are approximate and for guidance only. McCarthy Stone Resales do not take liability for any error, omission or misstatement. All parties must rely on their own inspections. It should not be assumed that any furniture or fittings contained in the photographs are included in any sale. All details referring to time and distances to localities are approximate. Details regarding any common charges and other applicable fees are provided by the seller and should not be relied on without verification and further checks made through a solicitor/conveyancer. Please contact the Property Consultant for further information that Appliances (including central heating) have not been tested, therefore it cannot be assumed that they are in good working order. All interested parties are advised to check availability and make an appointment before travelling to view the property to avoid disappointment or wasted time or travel expenses. The details contained within this brochure are for information purposes only and do not form part of any agreement. All purchases will be subject to contract terms. © All artwork (photos and floorplans) and written content are the sole property and copyright of McCarthy & Stone Resales Limited and are legally protected by UK & International copyright laws. Under no circumstance may you download, reproduce, publish or distribute any content for commercial purposes, without prior written permission from McCarthy Stone Resales. Unauthorised duplication or usage for commercial purposes is prohibited by the Copyright law and will be prosecuted.





Island View, Basingstoke, RG23 7GU

1 bed | £310,000

Development Summary

This stunning development of 45 one and two bedroom retirement apartments is located on Shortwood Copse Lane, in the residential suburb of Beggarwood in Basingstoke.

Island View has been exclusively designed for the over 60's, offering everything you need to enjoy an active and independent retirement, benefitting from living in your own home, free from the worries of outside maintenance or gardening and with like-minded retirees as neighbours.

The stunning communal lounge opens out to a large south facing terrace a perfect space to relax or socialise. Visiting friends or family can book into the development's guest suite. Peace of mind comes from a 24 hour emergency call system, should assistance be required day or night.

There is also the added support that comes from having a dedicated House Manager during office hours to oversee the efficient running of this lovely development.

Local Area

Island View is positioned in a sought-after suburban location on the edge of Basingstoke and has excellent transport links, yet is still surrounded by peaceful countryside. Numerous retail parks are dotted around Basingstoke and close to Island View, with a Lidl, Asda, Tesco and Morrisons all within a 10 minute drive away. The local Sainsbury's can be reached in 4 minutes by car or 15 minutes by foot, while a Co-operative Food and Boots pharmacy is just a 3 minute walk away.

Entrance Hall

Large entrance hall with a useful walk-in utility cupboard, shelving and storage space. Illuminated light switches, apartment security door entry system and intercom and emergency call system. Doors lead to the living room, bedroom, and the shower room.

Living Room with Patio

A bright and spacious through living/dining room benefitting from a glazed patio door with window to side opening to a wonderful patio seating area and the communal gardens beyond. TV and BT points, Sky & Sky+ connection point, ceiling

lights, fitted carpets and raised electric power sockets. Part glazed door leads into a separate kitchen.

Kitchen

A modern and thoughtfully designed fitted kitchen with an extensive range of base and wall units and drawers in a high gloss finish with contrasting work surfaces. Modern 'Blanco' anthracite composite sink unit with mono lever tap and drainer with an opaque glass splash back, sits below the window which overlooks the communal gardens. Waist level electric oven with space for microwave oven above, ceramic hob, stainless steel cooker hood and integral fridge freezer, integrated dishwasher.

Bedroom

Superbly spacious double bedroom with a large walk-in wardrobe housing rails and shelving. Ceiling light, TV and phone point, and double glazed window overlooking the communal gardens.

Shower Room

Partially tiled and boasting a glazed shower cubicle with thermostatically controlled shower unit, close coupled WC, vanity unit with inset wash hand basin with chromed lever mixer tap, mirror with light and shaver point and chrome ladder style heated towel rail.

Car Parking

This apartment benefits from having it's own parking space.

Service Charge (Breakdown)

- Cleaning of communal areas and windows
- Water rates for communal areas and apartments
- Electricity, heating, lighting and power to communal areas
- 24-hour emergency call system
- Upkeep of gardens and grounds
- Repairs and maintenance to the interior and exterior communal areas
- Contingency fund including internal and external redecoration of communal areas
- Buildings insurance

Service charge £2,997.77 per year until 28/02/2026 , the service charge does not cover external costs such as your Council Tax, electricity or TV, but does include the cost of your

House Manager. To find out more about the service charges please contact your Property Consultant or House Manager to find out more.

Lease Information

Lease Length: 999 years from January 2021  
Ground Rent: £495.00 per annum  
Ground Rent Review date: January 2036

Additional Information & Services

- Ultrafast Full Fibre Broadband available
- Mains water and electricity
- Electric room heating
- Mains drainage

**\*\* Entitlements Service\*\*** Check out benefits you may be entitled to, to support you with service charges and living cost's.  
**\*\* Part Exchange \*\*** We offer Part-Exchange service to help you move without the hassle of having to sell your own home.  
**\*\* Removal Service\*\*** Get a quote from our Partner Removal Service who can declutter and move you in to your new home.  
**\*\* Solicitors\*\*** Get a quote from our panel solicitors who have dealt with a number of sales and purchases and therefore familiar with the McCarthy Stone set up.

FOR MORE INFORMATION CHECK OUR WEBPAGE  
ADDITIONAL SERVICES OR SPEAK WITH OUR PROPERTY CONSULTANT

