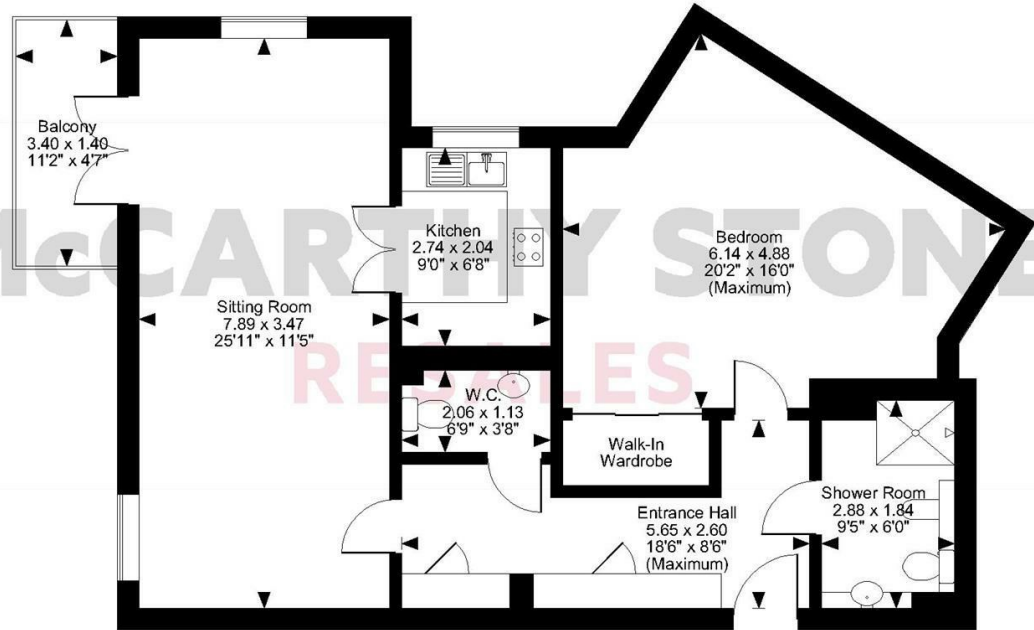
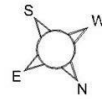
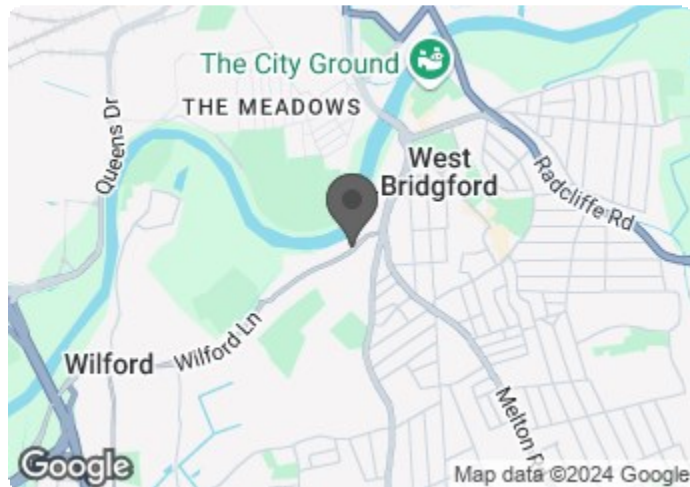


River View Court, Wilford Lane, Nottingham
 Approximate Gross Internal Area
 861 Sq Ft/80 Sq M
 Balcony external area = 51 Sq Ft/5 Sq M



Ground Floor FOR ILLUSTRATIVE PURPOSES ONLY - NOT TO SCALE
 The position & size of doors, windows, appliances and other features are approximate only.
 © ehous. Unauthorised reproduction prohibited. Drawing ref. dig/8611582/MSZ

Council Tax Band: B



Energy Efficiency Rating		Current	Potential
Very energy efficient - lower running costs			
(92 plus) A			
(81-91) B		82	82
(69-80) C			
(55-68) D			
(39-54) E			
(21-38) F			
(1-20) G			
Not energy efficient - higher running costs			
England & Wales	EU Directive 2002/91/EC		

14 River View Court

Wilford Lane, Nottingham, NG2 7TA



Asking price £235,000 Leasehold

WELL PRESENTED ONE BEDROOM APARTMENT WITH A WALK OUT BALCONY
 SITUATED IN RIVER VIEW COURT

This floor plan is not drawn to scale and is for illustrative purposes only. Any measurements, floor areas (including any total floor area), openings and orientation are approximate and for guidance only. McCarthy Stone Resales do not take liability for any error, omission or misstatement. All parties must rely on their own inspections. It should not be assumed that any furniture or fittings contained in the photographs are included in any sale. All details referring to time and distances to localities are approximate. Details regarding any common charges and other applicable fees are provided by the seller and should not be relied on without verification and further checks made through a solicitor/conveyancer. Please contact the Property Consultant for further information that Appliances (including central heating) have not been tested, therefore it cannot be assumed that they are in good working order. All interested parties are advised to check availability and make an appointment before travelling to view the property to avoid disappointment or wasted time or travel expenses. The details contained within this brochure are for information purposes only and do not form part of any agreement. All purchases will be subject to contract terms. © All artwork (photos and floorplans) and written content are the sole property and copyright of McCarthy & Stone Resales Limited and are legally protected by UK & International copyright laws. Under no circumstance may you download, reproduce, publish or distribute any content for commercial purposes, without prior written permission from McCarthy Stone Resales. Unauthorised duplication or usage for commercial purposes is prohibited by the Copyright law and will be prosecuted.



Call us on 0345 556 4104 to find out more.

Wilford Lane, West Bridgford, Nottingham

1 bed | £235,000

River View Court

River View Court was built by McCarthy & Stone and designed specifically for assisted retirement living for the over 70's located on the banks of the River Trent.

The development consists of 58 one and two-bedroom retirement apartments with design features to make day-to-day living easier. This includes beautifully equipped kitchens with waist height ovens to minimize bending, walk-in showers for ease of use, simple lever taps and slip resistant flooring.

As well as the privacy of your own apartment, there's the opportunity to lead a full and active social life. You can call into the homeowners' lounge and roof top terrace alongside beautiful gardens whenever you feel like company, and it's a lovely place to meet up with friends or join in the many activities organised by homeowners and the Estate Management team. The lounge is also the perfect space to invite friends and family over for a special celebration.

Open every day, our table service restaurant serves tasty and nutritious lunches for our homeowners and their friends and family, at a very reasonable price. All the food is freshly prepared and we can cater for special dietary requirements. For a special occasion or celebration, you're also welcome to book our function room.

River View Court also benefits a guest suite for visitors who wish to stay (additional charges apply). For peace of mind, there is an Estate Manager on site and 24-hour emergency call system provided via a personal pendant alarm and with call points in all rooms.

Local Area & Apartment Overview

River View Court enjoys prime location in West Bridgford, just south of Nottingham. Though a bustling city centre can be reached in a matter of minutes, West Bridgford's proximity doesn't compromise its charm. Homeowners are treated to peace, quiet and superb views across the River Trent; it's no surprise that West Bridgford is amongst the most favoured retirement locations in the country.

We are delighted to offer to the market this well presented, one bedroom apartment benefitting from a walk-out balcony. Under floor heating runs throughout the apartment.

Entrance Hall

Front door with spy hole leads to the large entrance hall - the 24-hour Tunstall emergency response pull cord system is situated in the hall. From the hallway there is a door to a walk-in storage/airing cupboard. Illuminated light switches, smoke detector, apartment security door entry system with intercom and emergency pull cord located in the hall. Doors lead to the living room, bedroom and wet room.

Living Room

A bright and spacious living room benefitting from a full height, double glazed french window with access to a walkout balcony. There's ample space for a dining table. TV and telephone points, Sky/Sky+ connection point, two ceiling lights. Fitted carpets, raised electric power sockets. Partially double glazed doors lead onto a separate kitchen.

Kitchen

Fitted with a range of cream fronted wall, drawer and base units, with wood effect roll top work surfaces over, inset Bosch electric oven with standing over for microwave, stainless steel sink unit with mixer tap over, over counter lighting, for ring electric Bosch hob with glass splash back and extractor hood over. Recessed integral fridge freezer, tiled floor, down lighting, ventilation system.

Bedroom

Spacious bedroom with ceiling light, TV, phone point, fitted carpets, raised electric power sockets. Door to a walk in wardrobe with shelving and hanging rails.

Wet Room

Fully fitted wet room with electric shower and glass screen. Low level WC, vanity unit with wash basin with cupboards beneath and fitted mirror light over. Part tiling to walls, wall mounted chrome towel radiator, ventilation system, shaving point and down lighting. Slip resistant flooring.

Service Charge

- Cleaning of communal windows

- Water rates for communal areas and apartments
- Electricity, heating, lighting and power to communal areas
- 24-hour emergency call system
- Upkeep of gardens and grounds
- Repairs and maintenance to the interior and exterior communal areas
- Contingency fund including internal and external redecoration of communal areas
- Buildings insurance

The service charge does not cover external costs such as your Council Tax, electricity or TV, but does include the cost of your Estate Manager, your water rates, the 24-hour emergency call system, the heating and maintenance of all communal areas, exterior property maintenance and gardening. Find out more about service charges please contact your Property Consultant or Estate Manager.

Service charge £8,761.74 per annum (for financial year end 30/06/2025)

Lease Information

999 years from 2016

Ground Rent

Annual charge - £435 per annum
Ground rent review: Jan-31

Additional Information & Services

- Ultrafast Full Fibre Broadband available
- Mains water and electricity
- Electric room heating
- Mains drainage

