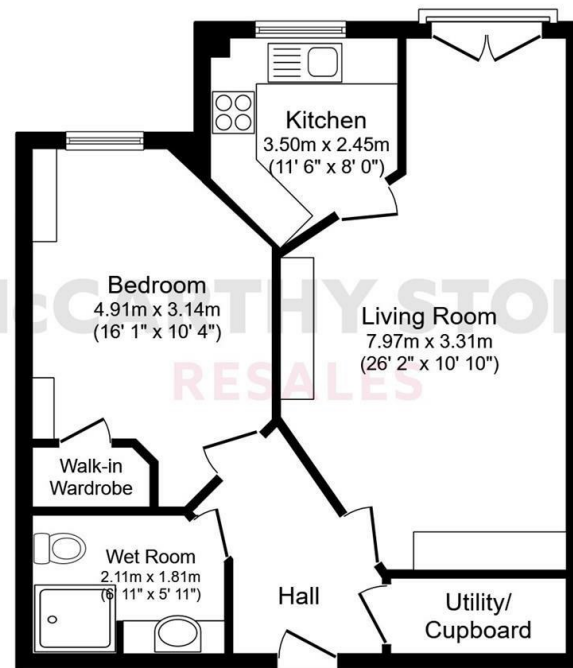


# McCARTHY STONE RESALES

## 33 THORNEYCROFT

WOOD ROAD, WOLVERHAMPTON, WV6 8PR



Total floor area 52.7 m<sup>2</sup> (567 sq.ft.) approx

This floor plan is for illustrative purposes only. It is not drawn to scale. Any measurements, floor areas (including any total floor area), openings and orientation are approximate. No details are guaranteed, they cannot be relied upon for any purpose and they do not form part of any agreement. No liability is taken for any error, omission or misstatement. A party must rely upon its own inspection(s). Powered by www.focalagent.com

### COUNCIL TAX BAND: D



Energy Efficiency Rating		Current	Potential
Very energy efficient - lower running costs			
(92 plus) <b>A</b>			
(81-91) <b>B</b>		<b>85</b>	<b>85</b>
(69-80) <b>C</b>			
(55-68) <b>D</b>			
(39-54) <b>E</b>			
(21-38) <b>F</b>			
(1-20) <b>G</b>			
Not energy efficient - higher running costs			



# McCARTHY STONE RESALES

This floor plan is not drawn to scale and is for illustrative purposes only. Any measurements, floor areas (including any total floor area), openings and orientation are approximate and for guidance only. McCarthy Stone Resales do not take liability for any error, omission or misstatement. All parties must rely on their own inspections. It should not be assumed that any furniture or fittings contained in the photographs are included in any sale. All details referring to time and distances to localities are approximate. Details regarding any common charges and other applicable fees are provided by the seller and should not be relied on without verification and further checks made through a solicitor/conveyancer. Please contact the Property Consultant for further information that Appliances (including central heating) have not been tested, therefore it cannot be assumed that they are in good working order. All interested parties are advised to check availability and make an appointment before travelling to view the property to avoid disappointment or wasted time or travel expenses. The details contained within this brochure are for information purposes only and do not form part of any agreement. All purchases will be subject to contract terms. © All artwork (photos and floorplans) and written content are the sole property and copyright of McCarthy & Stone Resales Limited and are legally protected by UK & International copyright laws. Under no circumstance may you download, reproduce, publish or distribute any content for commercial purposes, without prior written permission from McCarthy Stone Resales. Unauthorised duplication or usage for commercial purposes is prohibited by the Copyright law and will be prosecuted.



McCarthy & Stone Resales Limited, Trading as McCarthy Stone Resales • T: 0345 556 4104 • W: mccarthyandstoneresales.co.uk  
Registered Office: 100 Holdenhurst Road, Bournemouth, Dorset, BH8 8AQ. Registered in England and Wales No. 10716544

\*JOIN US FOR COFFEE & CAKE ON FRIDAY 6TH SEPTEMBER 2024 - FROM 10AM-4PM - BOOK YOUR PLACE TODAY!\*

A fantastic opportunity to acquire a one bedroom first floor apartment which forms part of the McCarthy Stone Retirement Living Plus Developments -

INCLUDES FURNITURE, FIXTURES AND FITTINGS

The accommodation briefly comprises of a welcoming entrance hallway with the 24-hour Tunstall emergency response pull cord system. Living Room having

### PRICE REDUCTION

## OFFERS IN THE REGION OF £189,999

For further details, please call **0345 556 4104**

resales@mccarthyandstone.co.uk | mccarthyandstoneresales.co.uk

# THORNEYCROFT, WOOD ROAD,

# 1 BEDROOMS £189,999

## THORNEYCROFT

Thorneycroft, is a stunning development exclusively for the over 70's, made up of one and two bedroom apartments. Part of our Retirement Living PLUS range (formally Assisted Living) this development is facilitated to provide its homeowners' with extra support if and when needed.

An Estate's Manager is on hand to manage the day to day running of the development and attend to any queries you may have. Within the service charge homeowners are allocated 1 hour's domestic assistance per week, however, additional hours can be arranged by prior appointment. There are a range of personal care packages to suit your requirements - these are provided by the onsite CQC registered care team.

For your reassurance the development has 24-Hour on-site staffing, secure camera entry systems and 24-Hour emergency call system provided by a personal pendant with static call points in bathroom and main bedroom. The development has a homeowners' lounge which is a superb venue for socialising with friends and family. If your guests have travelled from afar, they can extend their stay by booking into the development Guest Suite (usually for a fee of £25 per night - subject to availability)

Just 2 1/2 miles from Wolverhampton city centre, this development is located in the desirable village of Tettenhall, west of Wolverhampton City Centre. Thorneycroft features 29 modern one bedroom apartments and 28 two bedroom apartments within close proximity of the village green.

Homeowners can enjoy the landscaped gardens, on-site bistro and homeowners' lounge. There is also a 24-hour emergency call system and the fully trained onsite

care team are on hand around the clock in case you need anything.

The village itself has all the facilities you need, including a Co-op, hairdresser, butcher, delicatessen, artisan bakery, and a good selection of restaurants. A regular bus service runs from right outside the entrance and can take you into the city centre. In the centre of Tettenhall, you'll find a larger variety of amenities so you can spend your free time exactly how you want to.

## ENTRANCE

Front door with spy hole leads to the entrance hall. From the hallway there is a door to a walk-in airing cupboard. The 24-hour Tunstall emergency response pull cord system, Illuminated light switches, smoke detector and apartment security door entry system with intercom are situated here. All other doors lead to the living room, bedroom and shower room.

## LIVING ROOM

This living room is complimented by double glazed French doors which give access to a Juliette Balcony Telephone point. TV point (with Sky/Sky+ capabilities). Having fitted units.

Power sockets. Oak effect feature door with glazed panels lead into a separate kitchen.

## BEDROOM

Having a large walk-in wardrobe with shelving and rails, UPVC window. Having additional built in units. Ceiling lights, TV and phone point. Emergency response pull cord.

## SHOWER ROOM

Full wet room with slip resistant flooring, tiled walls and fitted with suite comprising of level access shower, low level WC, vanity unit with wash basin and mirror above. Emergency pull cord.

## KITCHEN

A modern fitted kitchen with a range of high gloss base and wall units. UPVC double glazed window sits above a single sink unit with drainer and mixer tap. Integrated electric oven and ceramic four ringed hob with extractor hood above. Integral fridge and freezer. Tiled floor.

## PARKING

Parking is by allocated space subject to availability. The fee is usually £250 per annum, but may vary by development. Permits are available on a first come, first served basis. Please check with the House Manager on site for availability.

## SERVICE CHARGE

Service Charge Details - • 24-Hour on-site staffing

- Subsidised meal costs
- 1 hours domestic assistance per week
- Cleaning of communal windows
- Water rates for communal areas and apartments
- Electricity, heating, lighting and power to communal areas
- 24 hour emergency call system
- Upkeep of gardens and grounds
- Repairs and maintenance to the interior and exterior communal areas
- Contingency fund including internal and external redecoration of communal areas
- Buildings insurance

The Service charge does not cover external costs such as your Council Tax, electricity or TV. To find out more about the service charges please please contact your Property Consultant or Estate Manager.

Service charge: £9,228.96 per annum (up to financial year end 01/06/2025).

## LEASE INFORMATION

Ground rent: £435 per annum  
Ground rent review: June 2032  
lease term 999 years from the 01/06/2017

## ADDITIONAL SERVICES

- Ultrafast Full Fiber Broadband available
- Mains water and electricity
- Electric room heating
- Mains drainage

