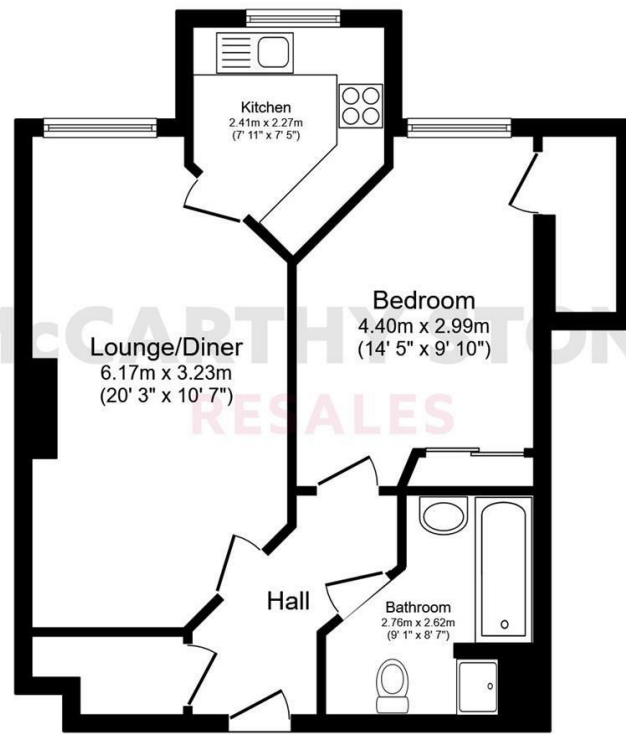


# McCARTHY STONE RESALES

## 46 GOODES COURT BALDOCK ROAD, ROYSTON, SG8 5FF



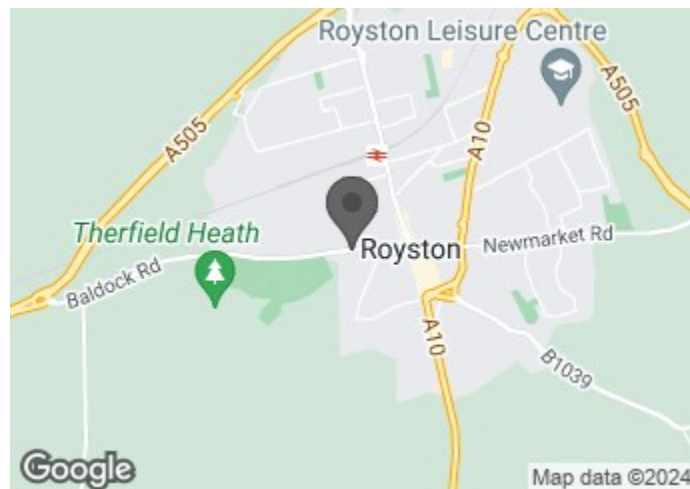
Total floor area 51.0 m<sup>2</sup> (549 sq.ft.) approx

Printed Contact Details...

This plan is for illustration purposes only and may not be representative of the property. Plan not to scale.

Powered by focalagent.com

### COUNCIL TAX BAND: B



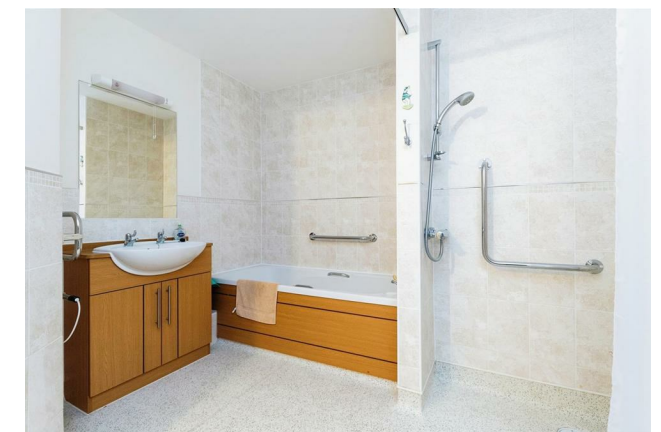
Energy Efficiency Rating		
	Current	Potential
Very energy efficient - lower running costs		
(92 plus) <b>A</b>		
(81-91) <b>B</b>	<b>83</b>	<b>83</b>
(69-80) <b>C</b>		
(55-68) <b>D</b>		
(39-54) <b>E</b>		
(21-38) <b>F</b>		
(1-20) <b>G</b>		
Not energy efficient - higher running costs		

# McCARTHY STONE RESALES

This floor plan is not drawn to scale and is for illustrative purposes only. Any measurements, floor areas (including any total floor area), openings and orientation are approximate and for guidance only. McCarthy Stone Resales do not take liability for any error, omission or misstatement. All parties must rely on their own inspections. It should not be assumed that any furniture or fittings contained in the photographs are included in any sale. All details referring to time and distances to localities are approximate. In accordance with the terms of the Lease, upon legal completion of the sale of a McCarthy Stone managed property a contingency fee is payable to the Landlord to be held in trust in a Contingency Fund to be used for the benefit of the remaining tenants of the development. Details regarding any leases, ground rent, service charge and other applicable fees are provided by the seller and should not be relied on without verification and further checks made through a solicitor/conveyancer. Please contact the Property Consultant for further information on the fees that apply to this property. Appliances (including central heating) have not been tested, therefore it cannot be assumed that they are in good working order. All interested parties are advised to check availability and make an appointment before travelling to view the property to avoid disappointment or wasted time or travel expenses. The details contained within this brochure are for information purposes only and do not form part of any agreement. All purchases will be subject to contract terms.



McCarthy & Stone Resales Limited, Trading as McCarthy Stone Resales • T: 0345 556 4104 • W: mccarthyandstoneresales.co.uk  
Registered Office: 100 Holdenhurst Road, Bournemouth, Dorset, BH8 8AQ. Registered in England and Wales No. 10716544



\*JOIN US FOR FIZZ, CAKE & ENTERTAINMENT AT THE NEWLY REFURBISHED & MODERNIZED GOODES COURT- THURSDAY 5TH SEPTEMBER 2024 - 10AM-4PM - BOOK YOUR PLACE TODAY!\*

FULL REFURBISHMENT of ALL communal spaces coming soon - READY FOR SUMMER!

ENJOY LUNCH ON US WHEN YOU TAKE A TOUR OF GOODES COURT - BOOK NOW!

A spacious one bedroom second floor apartment within a retirement living plus complex with 24/7 staffing, 1hrs domestic assistance per week and on-site

## ASKING PRICE £150,000 LEASEHOLD

For further details, please call **0345 556 4104**

resales@mccarthyandstone.co.uk | mccarthyandstoneresales.co.uk



# GOODES COURT, ROYSTON, HERTS, SG8

## 5FF

### GOODES COURT

The bustling market town of Royston is situated on the borders of Hertfordshire and Cambridgeshire and is home to Goodes Court. The development is situated on Baldock Road, close to Royston Heath and next to Royston golf course. Just 150 yards away, the traditional town centre offers a variety of high street shops and amenities.

Part of McCarthy Stone's Retirement Living PLUS range (formally assisted living), Goodes Court is equipped to offer various levels of care depending on your needs. An Estates Manager is on hand to manage the day to day running of the development and attend to any queries you may have. Within the service charge homeowners are allocated 1 hours domestic assistance per week, however, additional care services can be arranged.

For your reassurance the development is fitted with 24-Hour TV secure entry system. The development has a homeowners' lounge for socialising with friends and family and, for your convenience, an onsite waitress service restaurant with freshly cooked meals provided everyday. Other communal areas consist of a laundry room, mobility scooter store and charging point and landscaped gardens. It is a condition of purchase that residents must meet the age requirement of 70 years or of age or over.

### SOCIAL ACTIVITIES

The Communal Lounge is at the heart of the community at Goodes Court and is where the majority of social gatherings take place. Regular activities include; coffee mornings and afternoons, games nights, Chair Yoga, quiz and movie nights. They're a perfect opportunity to meet your neighbours and make new friends, but there's never any obligation to join in, you can socialise as much or as little as you want.

To make life even more convenient for homeowners there are two local Hairdressers and a Foot Health Practitioner that visit Goodes Court on a regular basis and always happy to welcome new clients.

### CARE & SUPPORT

The personal care services available at Goodes Court can help you do more of the things you love and enjoy peace of mind when you need a helping hand. You'll get to know the dedicated CQC registered care and support team who are onsite each day, led by our wonderful Estates Manager. They can assist with anything from changing your bed and doing your laundry, to escorting you to appointments and helping you get washed and dressed ready for the day. What's more, the services are flexible, so you can tailor your care package to suit your needs - just speak with the Estates Manager who will be happy to help organise a care package ready for when you move in.

### THE RESTAURANT

Serving everyday classics and tempting treats, the subsidised chef-run restaurant at Goodes Court serve freshly prepared food all year round. Perfect for those days when you don't feel like cooking or when guests come to visit. Take a look at our sample menu to see the delicious meals on offer - all at incredibly low prices.

### LANDSCAPED GARDENS

Goodes Court boasts extensive landscaped gardens which wraps around the development. Paved pathways allow you to explore the grounds easily, whilst the ample seating provides the perfect place for you to sit and enjoy the gardens blossom and bloom throughout the seasons. All the communal grounds are fully maintained, however if you do enjoy gardening, there is always opportunities to get involved as much as you like. Many of our 'green-fingered' communities have raised beds where homeowners can grow their own produce and still keep a hand in their favourite pastime.

### ENTRANCE HALL

Front door with spy hole leads to the large entrance hall. The 24-hour Tunstall emergency response module is located in the hall. From the hallway there is a door to a walk-in storage cupboard/airing cupboard. Smoke detector. Security door entry system with intercom. Doors lead to the lounge, bedroom, and wet room.

### LOUNGE

Spacious lounge with window providing views towards the front elevation, and has ample space for dining. The feature electric fire with surround acts as an attractive focal point. TV point with Sky+ connectivity, two ceiling lights, raised electric points and panelled heater. Part glazed door leads into a separate kitchen.

### KITCHEN

Kitchen fitted with a wide range of base and wall units which are again fitted with roll edge work surfaces. The electric oven is built in at work surface height for easy usage. There is a ceramic four ringed hob which sits beneath the extractor hood. Integrated fridge / freezer. Stainless steel sink unit with mixer tap and drainer sits below the window.

### BEDROOM

A spacious double bedroom with built in wardrobes and the benefit of a door to a storage room which is a unique feature. The window provides views towards the front elevation. Emergency pull-cord, TV and telephone point, raised electric points and panelled heater.

### WET ROOM

A purpose built wet room, with non slip safety flooring, equipped with low level bath and separate walk in shower with shower rail and both providing support rails, vanity unit with inset wash hand basin and storage, fitted mirror and shaver point, WC, wall mounted heated towel rail, and emergency pull-cord.

## 1 BED | £150,000

### SERVICE CHARGE (RLP)

What your service charge pays for:

- Estate Manager who ensures the development runs smoothly
- CQC Registered care staff on-site 24/7 for your peace of mind
- 1 hour cleaning / domestic assistance per week, per apartment
- 24hr emergency call system
- Monitored fire alarms and door camera entry security systems
- Maintaining lifts
- Heating and lighting in communal areas
- The running costs of the onsite restaurant
- Cleaning of communal areas daily
- Cleaning of windows
- Maintenance of the landscaped gardens and grounds
- Repairs & maintenance to the interior communal areas
- Contingency fund including internal and external redecoration of communal areas
- Buildings insurance, water and sewerage rates

The service charge does not cover external costs such as your Council Tax, electricity or TV. Find out more about service charges please contact your Property Consultant or Estate Manager.

Service Charge: £9,657.48 per annum (for financial year ending 31/03/2025).

Ask about our FREE ENTITLEMENTS SERVICE to find out what benefits you may be entitled to to support you with service charges and living costs. (Often offset by Government Entitlements e.g. Attendance Allowance £3,500-£5,200pa).

### PARKING PERMIT SCHEME (SUBJECT TO AVAILABILITY)

Parking is by allocated space subject to availability. The fee is usually £250 per annum, but may vary by development. Permits are available on a first come, first served basis. Please check with the House Manager on site for availability.

### LEASE INFORMATION

Lease length: 125 years from the 1st June 2011

Ground rent: £435 per annum

Ground rent review: 1st June 2026

### MOVING MADE EASY

Moving is a huge step, but don't let that hold you back. We have a range of services to help your move go smoothly, including:

- FREE Entitlements Advice to help you find out what benefits you may be entitled to that can assist with service charges or living costs.
- Part Exchange service to help you move without the hassle of having to sell your own home.
- Removal Services that can help you declutter and move you in to your new home.

• Conveyancing specialists who are experienced with sales and purchases of McCarthy Stone retirement properties.

For more information speak with our Property Consultant today.

### ADDITIONAL INFORMATION & SERVICES

- Gfast Fibre Broadband available
- Mains water and electricity
- Electric room heating
- Mains drainage

