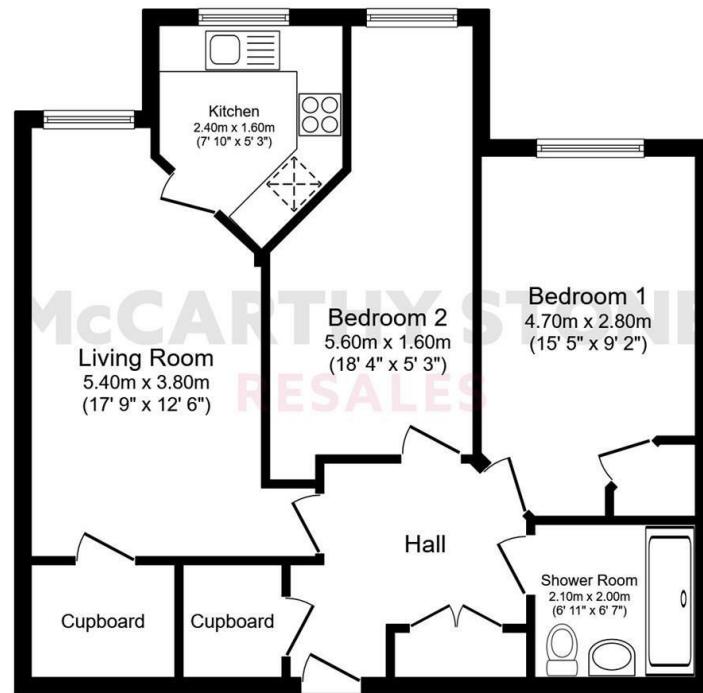


# McCARTHY STONE RESALES

## 26 HOMESTEAD PLACE

UPPER STAITHE ROAD, NORWICH, NR12 9FZ



Total floor area 66.5 sq.m. (716 sq.ft.) approx

Printed Contact Details...

This plan is for illustration purposes only and may not be representative of the property. Plan not to scale.

Powered by focalagent.com

**COUNCIL TAX BAND: A**



Energy Efficiency Rating		
	Current	Potential
Very energy efficient - lower running costs		
(92 plus) <b>A</b>		
(81-91) <b>B</b>	<b>82</b>	<b>82</b>
(69-80) <b>C</b>		
(55-68) <b>D</b>		
(39-54) <b>E</b>		
(21-38) <b>F</b>		
(1-20) <b>G</b>		
Not energy efficient - higher running costs		



# McCARTHY STONE RESALES

This floor plan is not drawn to scale and is for illustrative purposes only. Any measurements, floor areas (including any total floor area), openings and orientation are approximate and for guidance only. McCarthy Stone Resales do not take liability for any error, omission or misstatement. All parties must rely on their own inspections. It should not be assumed that any furniture or fittings contained in the photographs are included in any sale. All details referring to time and distances to localities are approximate. Details regarding any common charges and other applicable fees are provided by the seller and should not be relied on without verification and further checks made through a solicitor/conveyancer. Please contact the Property Consultant for further information that Appliances (including central heating) have not been tested, therefore it cannot be assumed that they are in good working order. All interested parties are advised to check availability and make an appointment before travelling to view the property to avoid disappointment or wasted time or travel expenses. The details contained within this brochure are for information purposes only and do not form part of any agreement. All purchases will be subject to contract terms. © All artwork (photos and floorplans) and written content are the sole property and copyright of McCarthy & Stone Resales Limited and are legally protected by UK & International copyright laws. Under no circumstance may you download, reproduce, publish or distribute any content for commercial purposes, without prior written permission from McCarthy Stone Resales. Unauthorised duplication or usage for commercial purposes is prohibited by the Copyright law and will be prosecuted.



McCarthy & Stone Resales Limited, Trading as McCarthy Stone Resales • T: 0345 556 4104 • W: mccarthyandstoneresales.co.uk  
Registered Office: 100 Holdenhurst Road, Bournemouth, Dorset, BH8 8AQ. Registered in England and Wales No. 10716544

~ PART EXCHANGE, ENTITLEMENTS ADVICE, REMOVALS AND SOLICITORS ALL AVAILABLE ~

A BRIGHT and SPACIOUS two bedroom SECOND FLOOR apartment. This well presented apartment is situated within a popular MCCARTHY STONE retirement living development. CAR PARKING SPACE INCLUDED.

**PRICE REDUCTION**

**OFFERS IN THE REGION OF £235,000**

For further details, please call **0345 556 4104**

resales@mccarthyandstone.co.uk | mccarthyandstoneresales.co.uk

# HOMESTEAD PLACE, UPPER STAITHE

# 2 BEDROOMS £235,000

## HOMESTEAD PLACE

Homestead Place was built by McCarthy Stone and has been designed and constructed for modern retirement living. The development consists of 30 one and two-bedroom retirement apartments for the over 60s. The apartments boast Sky/Sky+ connection points in lounge, walk-in wardrobes in bedroom and security door entry systems. The dedicated House Manager is on site during working hours to take care of things and make you feel at home. There's no need to worry about the burden of maintenance costs as the service charge covers the cost of all external maintenance, gardening and landscaping, external window cleaning, buildings insurance, water rates and security systems. All energy costs of the homeowners lounge and other communal areas are also covered in the service charge. For your peace of mind the development has camera door entry and 24-hour emergency call systems, should you require assistance. The Homeowners' lounge provides a great space to socialise with friends and family. If your guests have travelled from afar, they can extend their stay by booking into the development Guest Suite (usually for a fee of £25 per night - subject to availability).

## LIVING IN STALHAM

Stalham is known as the gateway to the Norfolk Broads, meaning it's a popular tourist destination, particularly during the summer months. But the local residents also give the town a friendly and welcoming feel year-round. With so much stunning countryside to explore on your doorstep, Stalham is a dream retirement destination for lovers of the great outdoors.

## ENTRANCE HALL

Front door with spy hole leads to the large entrance hall - the 24-hour Tunstall emergency response pull cord system is situated in the hall. From the hallway there is a door to a storage cupboard/airing cupboard housing a washer/dryer. Illuminated light switches, smoke detector, apartment security door entry system with intercom and emergency pull cord located in the hall. Doors lead to the lounge, two bedrooms and shower room.

## LOUNGE

A bright and spacious lounge with a large storage cupboard. The generously sized lounge would provide room for a small dining table. TV and Sky/Sky plus points, raised height power points. Door with glazed panel leading to the kitchen.

## KITCHEN

Fully fitted kitchen with a range of modern low and eye level units and drawers with a roll top work surface. Inset sink with mono lever tap and drainer. Waist height oven (for minimal bend) with space above for a microwave, four ring ceramic hob, cooker hood and extractor fan. Integral fridge-freezer. Under pelmet and central ceiling lighting.

## MASTER BEDROOM

A comfortable master bedroom with window towards the front elevation. The room benefits from a walk-in wardrobe with hanging rails and shelving. TV and telephone points, raised height power points.

## BEDROOM TWO

Good size double bedroom which could be used as a dining room, study room or even a spare bedroom. TV and telephone points, raised height power points.

## SHOWER ROOM

A Modern suite comprising a full length shower with glass screen and support rail. Wash basin, WC, heated towel rail radiator, extractor fan, shaver point. Tiled flooring.

## SERVICE CHARGE

- Onsite visiting house manager
- 24-hour emergency call system
- Water rates for communal areas and apartments
- Cleaning of communal windows
- Electricity, heating, lighting and power to communal areas
- Upkeep of gardens and grounds
- Repairs and maintenance to the interior and exterior communal areas
- Contingency fund including internal and external redecoration of communal areas
- Buildings insurance

The service charge does not cover external costs such as your Council Tax, electricity or TV, please contact your Property Consultant or House Manager.

The service charge is: £6,458.93 per annum (up to financial year end 29/02/2025)

**\*\*Entitlements Service\*\*** Check out benefits you may be entitled too, to support you with service charges and living costs. (often offset by Government Entitlements eg Attendance Allowance £3,500-£5,200)'.  
**LEASEHOLD INFORMATION**  
Lease length: 999 years from June 2016  
Ground Rent: £495 per annum  
Ground Rent Review Date: June 2036

## ADDITIONAL SERVICES

**\*\* Entitlements Service\*\*** Check out benefits you may be entitled too, to support you with service charges and living cost's.  
**\*\* Part Exchange \*\*** We offer Part-Exchange service to help you move without the hassle of having to sell your own home.  
**\*\* Removal Service\*\*** Get a quote from our Partner Removal Service who can declutter and move you in to your new home.  
**\*\* Solicitors\*\*** Get a quote from our panel solicitors who have dealt with a number of sales and purchases and therefore familiar with the McCarthy Stone set up.

FOR MORE INFORMATION CHECK OUR WEBPAGE  
ADDITIONAL SERVICES OR SPEAK WITH OUR PROPERTY CONSULTANT

- Ultrafast Full Fibre Broadband available
- Mains water and electricity
- Electric room heating
- Mains drainage

