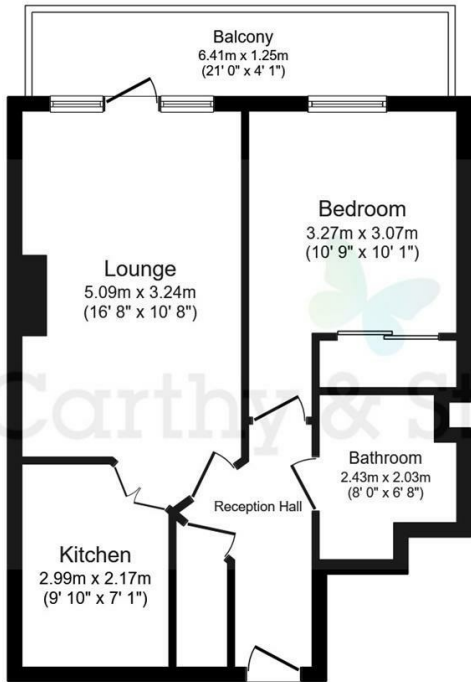


25 Cartwright Court

Victoria Road, Malvern, WR14 2GE



Ground Floor



Asking price £170,000 Leasehold

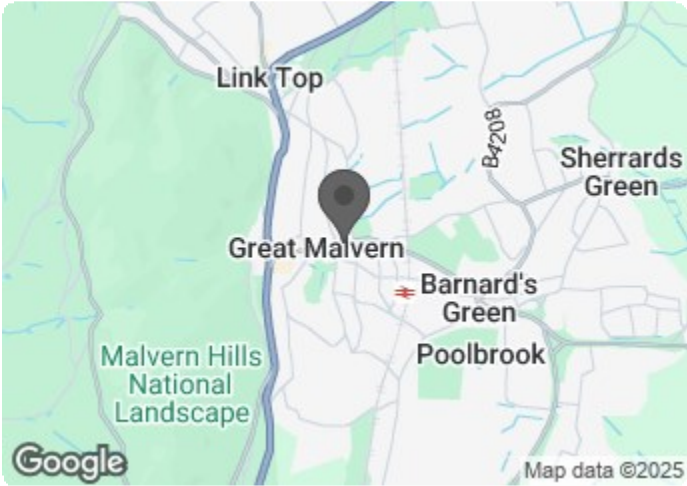
Join us for our Open Day - Tuesday 29th April 2025 - from 10am - 4pm - book your place today!

Fantastic one bedroom retirement apartment with ~ LARGE REFURBISHED BALCONY~ This unique BRIGHT & AIRY apartment has been LOVINGLY MAINTAINED and is one of few which offer PRIVATE OUTSIDE SPACE thanks to its balcony. **ENJOY LUNCH ON US WHEN YOU TAKE A TOUR OF CARTWRIGHT COURT - BOOK NOW**

Call us on 0345 556 4104 to find out more.

resales@mccarthyandstone.co.uk | mccarthyandstoneresales.co.uk

Council Tax Band: B



Energy Efficiency Rating		
	Current	Potential
Very energy efficient - lower running costs		
(92 plus) A		
(81-91) B	85	87
(69-80) C		
(55-68) D		
(39-54) E		
(21-38) F		
(1-20) G		
Not energy efficient - higher running costs		
England & Wales	EU Directive 2002/91/EC	

This floor plan is not drawn to scale and is for illustrative purposes only. Any measurements, floor areas (including any total floor area), openings and orientation are approximate and for guidance only. McCarthy Stone Resales do not take liability for any error, omission or misstatement. All parties must rely on their own inspections. It should not be assumed that any furniture or fittings contained in the photographs are included in any sale. All details referring to time and distances to localities are approximate. Details regarding any common charges and other applicable fees are provided by the seller and should not be relied on without verification and further checks made through a solicitor/conveyancer. Please contact the Property Consultant for further information that Appliances (including central heating) have not been tested, therefore it cannot be assumed that they are in good working order. All interested parties are advised to check availability and make an appointment before travelling to view the property to avoid disappointment or wasted time or travel expenses. The details contained within this brochure are for information purposes only and do not form part of any agreement. All purchases will be subject to contract terms. © All artwork (photos and floorplans) and written content are the sole property and copyright of McCarthy & Stone Resales Limited and are legally protected by UK & International copyright laws. Under no circumstance may you download, reproduce, publish or distribute any content for commercial purposes, without prior written permission from McCarthy Stone Resales. Unauthorised duplication or usage for commercial purposes is prohibited by the Copyright law and will be prosecuted.



Cartwright Court, Church Street, Malvern, WR14 2GE

The Apartment

This lovely apartment has been very well maintained and is ready for someone to move straight in. It boasts a large balcony, which is easily big enough for an array plant pots, should you enjoy gardening, and patio furniture. This outside space makes the apartment quite unique within the development, and really opens up what is already a bright and spacious apartment.

Entrance Hallway

Front door with spy hole leads into the entrance hall. Door opening to storage cupboard. Further doors lead to the bedroom, wet room, and living room. Ceiling light fitting. A wall mounted emergency call module. Further safety features consist of a smoke detector and secure entry system.

Living Room

A spacious living room with double glazed patio door which leads out to a large balcony with pleasant views. TV and telephone point. Power points. Electric storage heater. Two ceiling light points. An oak effect door with glazed panels leads into the kitchen.

Kitchen

Large fitted kitchen with a range of base and wall units. Fully integrated appliances comprising fridge, freezer, electric oven and induction hob with chrome extractor hood. Stainless steel sink unit sits under a double glazed window. Power points. Plinth heater. Tiled floor and splash back.



Bedroom

Built in wardrobe with mirrored sliding doors containing both ample hanging space and shelving. Ceiling light. Power points. Emergency pull cord. Door off to a large additional storage cupboard.

Bathroom

Purpose built wet room with slip resistant safety flooring. Low level bath. Shower with curtain and grab rails. Vanity unit with inset sink and mirror above. Emergency pull-cord.

Cartwright Court

The Development Cartwright Court is an assisted living development comprising of 54 one and two bedroom apartments for the over 70s. Cartwright Court is one of McCarthy & Stone's Retirement Living PLUS range and is facilitated to provide its homeowners' with extra care. An Estates Manager is on hand to manage the day to day running of the development and attend to any queries you may have. Within the service charge homeowners are allocated 1 hours domestic assistance per week, however, additional hours can be arranged by prior appointment. There are a range of flexible personal care packages to suit your requirements - these are provided by the onsite CQC registered care agency team. For your reassurance the development is fitted with 24-Hour CCTV and a secure entry system. The development has a homeowners' lounge for socialising with friends and family and, for your convenience, an onsite waitress service restaurant with freshly cooked meals



1 bed | £170,000

provided every day. It is a condition of purchase that residents must meet the age requirement of 70 years or of age or over.

Service charge details

- Cleaning of communal windows
- Water rates for communal areas and apartments
- 24 hour emergency call system
- Upkeep of gardens and grounds
- Repairs and maintenance to the interior and exterior communal areas
- Contingency fund including internal and external redecoration of communal areas
- Buildings insurance

The Service charge does not cover external costs such as your Council Tax, electricity or TV, but does include the cost of your House Manager, your water rates, our 24 hour emergency call system, the heating and maintenance of all communal areas, exterior property maintenance and gardening. To find out more about the service charges please contact your Property Consultant or House Manager.

Service charge: £10,993.45 per annum (for financial year ending 31/03/26)

Lease details

125 years from 1st June 2013
Ground Rent - £435 per annum.
Ground Rent Review date - 1st June 2028

Car Parking

Parking is by allocated space subject to availability. The fee is usually £250 per annum, but may vary by development. Permits are available on a first come, first served basis. Please check with the Estate Manager on site for availability.

Additional Information & Services

- Superfast Fibre Broadband available
- Mains water and electricity
- Electric room heating
- Mains drainage

