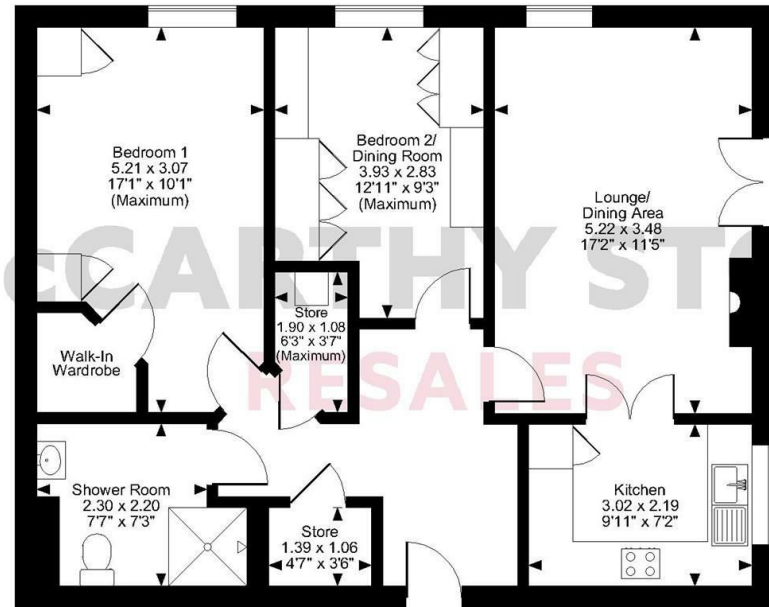
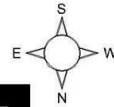


Marbury Court, Chester Way, Northwich
Approximate Gross Internal Area
784 Sq Ft/73 Sq M



Second Floor

FOR ILLUSTRATIVE PURPOSES ONLY - NOT TO SCALE

The position & size of doors, windows, appliances and other features are approximate only.
© ehouse. Unauthorised reproduction prohibited. Drawing ref. dig/8533276/JCR

McCARTHY STONE RESALES

38 MARBURY COURT CHESTER WAY, NORTHWICH, CW9 5FQ



COUNCIL TAX BAND: C



Energy Efficiency Rating		Current	Potential
Very energy efficient - lower running costs			
(92 plus) A			
(81-91) B		82	82
(69-80) C			
(55-68) D			
(39-54) E			
(21-38) F			
(1-20) G			
Not energy efficient - higher running costs			



McCARTHY STONE RESALES

This floor plan is not drawn to scale and is for illustrative purposes only. Any measurements, floor areas (including any total floor area), openings and orientation are approximate and for guidance only. McCarthy Stone Resales do not take liability for any error, omission or misstatement. All parties must rely on their own inspections. It should not be assumed that any furniture or fittings contained in the photographs are included in any sale. All details referring to time and distances to localities are approximate. Details regarding any common charges and other applicable fees are provided by the seller and should not be relied on without verification and further checks made through a solicitor/conveyancer. Please contact the Property Consultant for further information that Appliances (including central heating) have not been tested, therefore it cannot be assumed that they are in good working order. All interested parties are advised to check availability and make an appointment before travelling to view the property to avoid disappointment or wasted time or travel expenses. The details contained within this brochure are for information purposes only and do not form part of any agreement. All purchases will be subject to contract terms. © All artwork (photos and floorplans) and written content are the sole property and copyright of McCarthy & Stone Resales Limited and are legally protected by UK & International copyright laws. Under no circumstance may you download, reproduce, publish or distribute any content for commercial purposes, without prior written permission from McCarthy Stone Resales. Unauthorised duplication or usage for commercial purposes is prohibited by the Copyright law and will be prosecuted.



JOIN US FOR TEA & CAKE - WEDNESDAY 4TH SEPTEMBER 2024 - FROM 11AM - 4PM - BOOK YOUR PLACE TODAY!

A well presented RIVER FACING 2nd floor TWO BEDROOM retirement apartment in the prestigious McCarthy Stone MARBURY COURT development. The communal facilities on offer within this development include; an IN-HOUSE RESTAURANT, Homeowners Lounge where SOCIAL ACTIVITIES take place and a STUNNING ROOF TERRACE. A wide range of local amenities in easy reach.

PRICE REDUCTION

ASKING PRICE £280,000 LEASEHOLD

For further details, please call **0345 556 4104**

resales@mccarthyandstone.co.uk | mccarthyandstoneresales.co.uk

MARBURY COURT, CHESTER WAY,

2 BEDROOMS £280,000

SUMMARY

Marbury Court was built by McCarthy & Stone purpose built for retirement living plus formally assisted living. The development consists of 57 one and two-bedroom retirement apartments with design features to make day-to-day living easier. As well as the privacy of your own apartment, there's the opportunity to lead a full and active social life. You can call into the homeowners' lounge whenever you feel like company, and it's a lovely place to meet up with friends or join in the many activities organised by homeowners and the Estate Management team. The lounge is also the perfect space to invite friends and family over for a special celebration. Open every day, our table service restaurant serves tasty and nutritious lunches for our homeowners and their friends and family, at a very reasonable price. All the food is freshly prepared and we can cater for special dietary requirements. For a special occasion or celebration, you're also welcome to book our function room and there is a computer available to use here. Marbury Court also benefits from river views from the roof terrace and a guest suite for visitors who wish to stay (additional charges apply). For peace of mind, there is an Estate Manager on site and 24-hour emergency call system provided via a personal pendant alarm and with call points in all rooms.

LOCAL AREA

Marbury Court is situated in Northwich lying in the heart of the Cheshire Plain, at the confluence of the River Weaver and River Dane. It is only 18 miles from the beautiful City of Chester and within easy reach of both Liverpool and Manchester. Northwich is on the main railway line between Chester and Manchester and is only a short distance from the M56 and the M6.

THE APARTMENT

A spacious corner 2 bedroomed apartment with amazing river views.

ENTRANCE HALL

Front door with spy hole leads to the large entrance hall - the 24-hour Tunstall emergency response pull cord system is situated in the hall. From the hallway there are doors to 2 walk-in storage cupboard/airing cupboards. Illuminated light switches, smoke detector, apartment security door entry system with intercom and emergency pull cord located in the hall. Doors lead to the lounge, bedrooms and bathroom.

LOUNGE

Spacious lounge benefiting from a corner aspect and Juliet balcony with fantastic views over the river, with an additional window making this room bright and airy. Modern electric fire in feature fireplace. TV and telephone points, Sky/Sky+ connection point. Fitted carpets, raised electric power sockets. Leading into the kitchen.

KITCHEN

Fully fitted kitchen with a range of modern low and eye level units and drawers with a roll top work surface. Stainless steel sink with mono lever tap and drainer. Oven, ceramic hob, cooker hood and integral fridge freezer. UPVC window with a river view.

BEDROOM ONE

Spacious master bedroom. This room also benefits from a walk-in wardrobe housing rails and shelving and additional fitted wardrobes and dressing table. Ceiling lights, TV and phone point.

BEDROOM TWO

Second bedroom with a comprehensive range of fitted bedroom furniture. Ceiling lights, TV and phone point.

SHOWER ROOM

Fully tiled and fitted with suite comprising of level access shower. Low level WC, vanity unit with wash basin and mirrored cabinet above. Shaving point, electric heater and extractor fan.

SERVICE CHARGE (BREAKDOWN)

- 1 hour domestic assistance per week
- Cleaning of communal windows
- Water rates for communal areas and apartments
- Electricity, heating, lighting and power to communal areas
- 24 hour emergency call system
- Upkeep of gardens and grounds
- Repairs and maintenance to the interior and exterior communal areas
- Contingency fund including internal and external redecoration of communal areas
- Buildings insurance

The Service charge does not cover external costs such as your Council Tax, electricity or TV, but does include the cost of your

Estate Manager, your water rates, our 24 hour emergency call system, the heating and maintenance of all communal areas, exterior property maintenance and gardening. To find out more about the service charges please contact your Property Consultant or Estate Manager.

Service Charge: £13,398.48 per annum (for financial year end 30th Sept 2024)

Managed by: McCarthy and Stone Management Services

CAR PARKING PERMIT SCHEME-SUBJECT TO AVAILABILITY

Parking is by allocated space subject to availability. The fee is £250 per annum. Permits are available on a first come, first served basis. Please check with the Estate Manager on site for availability.

LEASEHOLD INFORMATION

Lease Length: 125 Years from January 2015

Ground rent: £510 per annum

Ground rent review date: Jan 2030

Age restriction normally over 70 years OR approaching 70 years old subject to the incoming resident's circumstances and the approval of the landlord and the property manager.

ADDITIONAL INFORMATION & SERVICES

- Ultrafast Full Fibre Broadband available
- Mains water and electricity
- Electric room heating
- Mains drainage

