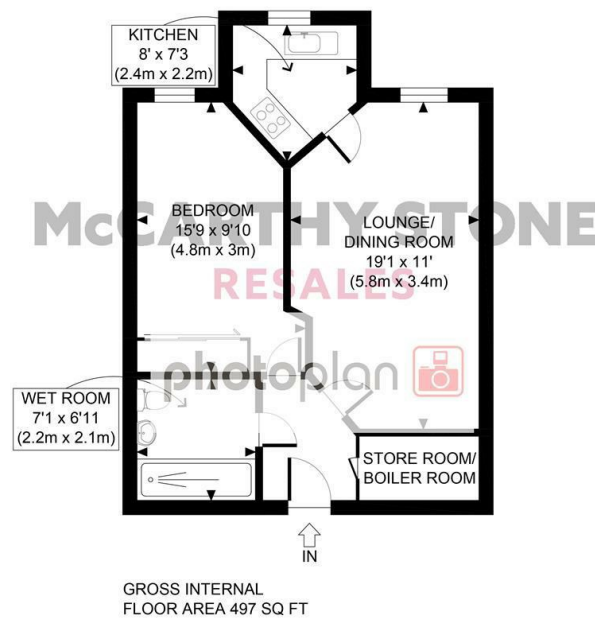


McCARTHY STONE RESALES

14 SANDERLING COURT WIMBORNE ROAD, BOURNEMOUTH, BH2 6NB



APPROX. GROSS INTERNAL FLOOR AREA 497 SQ FT / 46 SQM	Sanderling Court
Disclaimer: Floor plan measurements are approximate and are for illustrative purposes only. While we do not doubt the floor plan accuracy and completeness, you or your advisors should conduct a careful, independent investigation of the property in respect of monetary valuation	date 30/11/22
	photoplan

COUNCIL TAX BAND: D



Energy Efficiency Rating		
	Current	Potential
Very energy efficient - lower running costs		
(92 plus) A		
(81-91) B	86	88
(69-80) C		
(55-68) D		
(39-54) E		
(21-38) F		
(1-20) G		
Not energy efficient - higher running costs		



McCARTHY STONE RESALES

This floor plan is not drawn to scale and is for illustrative purposes only. Any measurements, floor areas (including any total floor area), openings and orientation are approximate and for guidance only. McCarthy Stone Resales do not take liability for any error, omission or misstatement. All parties must rely on their own inspections. It should not be assumed that any furniture or fittings contained in the photographs are included in any sale. All details referring to time and distances to localities are approximate. Details regarding any common charges and other applicable fees are provided by the seller and should not be relied on without verification and further checks made through a solicitor/conveyancer. Please contact the Property Consultant for further information that Appliances (including central heating) have not been tested, therefore it cannot be assumed that they are in good working order. All interested parties are advised to check availability and make an appointment before travelling to view the property to avoid disappointment or wasted time or travel expenses. The details contained within this brochure are for information purposes only and do not form part of any agreement. All purchases will be subject to contract terms. © All artwork (photos and floorplans) and written content are the sole property and copyright of McCarthy & Stone Resales Limited and are legally protected by UK & International copyright laws. Under no circumstance may you download, reproduce, publish or distribute any content for commercial purposes, without prior written permission from McCarthy Stone Resales. Unauthorised duplication or usage for commercial purposes is prohibited by the Copyright law and will be prosecuted.



A BEAUTIFULLY PRESENTED ONE BEDROOM first floor Retirement APARTMENT OVERLOOKING THE GARDENS Viewing recommended to fully appreciate all the facilities at this development.***

PRICE REDUCTION

OFFERS OVER £135,000 LEASEHOLD

For further details, please call **0345 556 4104**

resales@mccarthyandstone.co.uk | mccarthyandstoneresales.co.uk

SANDERLING COURT, WIMBORNE ROAD,

1 BEDROOMS £135,000

INTRODUCTION:

This is a beautifully presented one bedroom first floor apartment offered at Sanderling Court. With accommodation including a spacious living room, quality kitchen with integrated appliances, excellent bedroom with wardrobe and wetroom with level access shower.

Sanderling Court is a purpose built McCarthy & Stone Development of luxury apartments offering homeowners independence in a secure environment. Sanderling Court comprises of 30 one and two bedroom apartments arranged over three floors each served by a lift. There is a House Manager on site to provide support and oversee the smooth running of the development and a 24 hour emergency call system. Communal lounge, laundry and beautiful landscaped gardens. There is a guest suite available for visiting family and friends at a very affordable nightly rate of just £25. Home Owners have use of Guest Suites at any of McCarthy and Stone managed developments around the Country. Car Parking is by permit for which there is a charge of £250 pa. Please check with our House Manager for current availability.

Sanderling Court has a schedule of regular and varied activities from which to choose. Whilst there is something for everyone there is certainly no obligation to participate and home owners can be as involved or remain as private as they might wish.

Bournemouth railway station is located approximately 1 mile from Sanderling Court and offers services to Parkstone, Poole, Hamworthy, Weymouth, Pokesdown, Christchurch, Brockenhurst, Southampton and London Waterloo. A bus stop is located directly outside Sanderling Court and offers services into Bournemouth Town Centre, which boasts an array of

popular stores, restaurants and cinemas. It is a condition of purchase that all residents must be over the age of 60 years.

ENTRANCE HALL:

A very spacious hallway with a solid entrance door with spy-hole, security intercom system that provides both a visual (via the home-owners TV) and verbal link to the main development entrance door. Emergency pull cord, walk-in cloaks/store cupboard with light, hanging rail and shelf, further store/airing cupboard with light and shelving housing the Gledhill boiler supplying hot water and the concealed 'Vent Axia' heat exchange unit. A feature glazed panelled door leads to the living room.

LIVING ROOM:

A double glazed window. Focal point fireplace with inset electric fire. TV and telephone points. Two ceiling lights. Fitted carpets, raised electric power sockets. Underfloor heating with individual thermostats. A glazed panelled door leads onto a separate kitchen.

KITCHEN:

With a double-glazed window overlooking the lovely garden of the development. Quality 'Maple' effect fitted units with contrasting worktops and incorporating a stainless steel inset sink unit. range of integrated appliances comprise; a four-ringed hob with stainless steel chimney extractor hood over, waist-level Zanussi oven, and concealed dishwasher, fridge and freezer. part-tiled walls and fully tiled floor.

DOUBLE BEDROOM:

Having a deep double-glazed window. Built-in wardrobe with hanging space, shelving and mirror-fronted doors.

WETROOM:

Modern white suite comprising; WC, vanity wash-hand basin with cupboard unit below and mirror, strip light

and shaver point over. Walk-in, level access shower with a glazed screen, electric heated towel rail, emergency pull cord and ceiling spot light. Fully tiled walls and floor,

SERVICE CHARGE

- Cleaning of communal windows
- Water rates for communal areas and apartments
- Electricity, heating, lighting and power to communal areas
- 24-hour emergency call system
- Upkeep of gardens and grounds
- Repairs and maintenance to the interior and exterior communal areas
- Contingency fund including internal and external redecoration of communal areas
- Buildings insurance

The Service charge does not cover external costs such as your Council Tax, electricity or TV. If you have any questions please contact your Property Consultant or House Manager.

Service charge: £3,796.80 per annum (for financial year end 31/03/2025)

LEASEHOLD

LEASE 125 Years from the first June 2011

Ground Rent: £425 per annum

Ground Rent Review Date: June 2026

ADDITIONAL INFORMATION & SERVICES

- Superfast Fibre Broadband available
- Mains water and electricity
- Electric room heating
- Mains drainage

