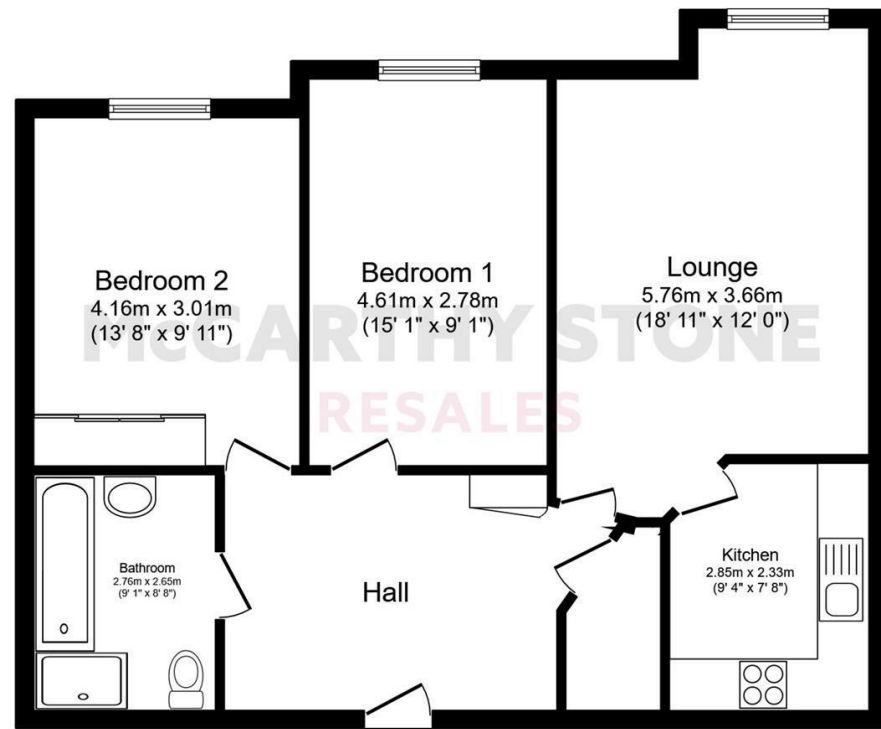


McCARTHY STONE RESALES

45 HORTON MILL COURT,
HANBURY ROAD, DROITWICH, WR9 8GD



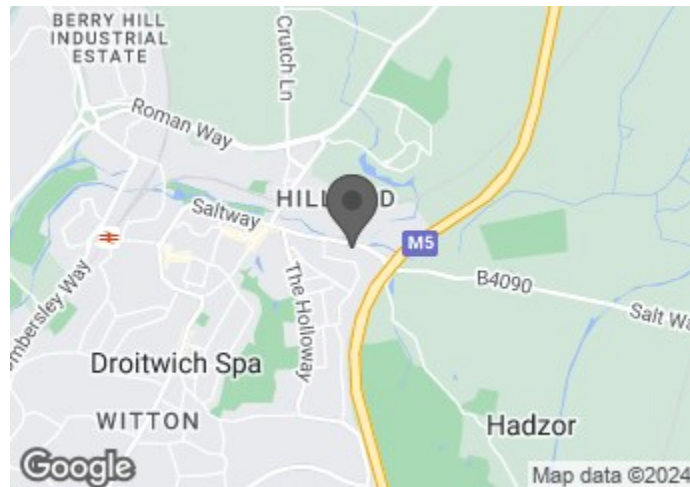
Total floor area 71.5 sq.m. (769 sq.ft.) approx

Printed Contact Details...

This plan is for illustration purposes only and may not be representative of the property. Plan not to scale.

Powered by focalagent.com

COUNCIL TAX BAND: C



Energy Efficiency Rating		Current	Potential
Very energy efficient - lower running costs			
(92 plus) A			
(81-91) B			
(69-80) C			
(55-68) D			
(39-54) E			
(21-38) F			
(1-20) G			
Not energy efficient - higher running costs			
		84	84



SPACIOUS TWO BEDROOM Retirement Apartment situated on the second floor in the VERY DESIRABLE Horton Mill Court ~Offered in GOOD CONDITION~

ASKING PRICE £230,000 LEASEHOLD

For further details, please call **0345 556 4104**

resales@mccarthyandstone.co.uk | mccarthyandstoneresales.co.uk

This floor plan is not drawn to scale and is for illustrative purposes only. Any measurements, floor areas (including any total floor area), openings and orientation are approximate and for guidance only. McCarthy Stone Resales do not take liability for any error, omission or misstatement. All parties must rely on their own inspections. It should not be assumed that any furniture or fittings contained in the photographs are included in any sale. All details referring to time and distances to localities are approximate. Details regarding any common charges and other applicable fees are provided by the seller and should not be relied on without verification and further checks made through a solicitor/conveyancer. Please contact the Property Consultant for further information that Appliances (including central heating) have not been tested, therefore it cannot be assumed that they are in good working order. All interested parties are advised to check availability and make an appointment before travelling to view the property to avoid disappointment or wasted time or travel expenses. The details contained within this brochure are for information purposes only and do not form part of any agreement. All purchases will be subject to contract terms. © All artwork (photos and floorplans) and written content are the sole property and copyright of McCarthy & Stone Resales Limited and are legally protected by UK & International copyright laws. Under no circumstance may you download, reproduce, publish or distribute any content for commercial purposes, without prior written permission from McCarthy Stone Resales. Unauthorised duplication or usage for commercial purposes is prohibited by the Copyright law and will be prosecuted.



HORTON MILL COURT, HANBURY ROAD, DROITWICH, WR9 8GD

2 BED | £230,000

MOVING MADE EASY

Moving is a huge step, but don't let that hold you back. We have a range of services to help your move go smoothly, including:

- FREE Entitlements Advice to help you find out what benefits you may be entitled to that can assist with service charges or living costs.
- Part Exchange service to help you move without the hassle of having to sell your own home.
- Removal Services that can help you declutter and move you in to your new home.
- Conveyancing specialists who are experienced with sales and purchases of McCarthy Stone retirement properties.

For more information speak with our Property Consultant today.

ENTRANCE HALLWAY

Wall mounted house alarm, emergency intercom and security door entry system. Solid wooden door with spy hole and letter box. Door to storage cupboard. All other doors lead to the bedrooms, bathroom and living room.

LIVING ROOM

A very generously sized living room, feature fireplace and inset electric fire with ample room for dining. Double glazed windows with pleasant views out. Further patio door from the lounge leading to a walk out balcony area. Ceiling light fitting, TV and telephone points. Oak effect double doors lead off to a separate kitchen.

KITCHEN

A light and airy delightful dual aspect kitchen featuring integrated appliances comprising; easy access electric oven; fridge and freezer. Ceramic hob with extractor hood above. Single drainer sink unit with mixer tap.

MASTER BEDROOM

Central ceiling light fitting. Built in mirror fronted double wardrobe. Wall mounted heater. TV and telephone point. Power points. Double glazed window.

BATHROOM

Purpose built wet room with non slip safety flooring. Low level bath. Shower unit with curtain and grab rails. Vanity unit with inset sink and mirror above. Heated towel rail. Emergency pull-cord.

BEDROOM TWO

Central ceiling light fitting. Built in fitted furniture. Wall mounted heater. TV and telephone point. Power points. Floor to ceiling window overlooking the apartment balcony.

BATHROOM

Wet room with slip resistant flooring. Low level bath with hand grips. Level access shower with grab rails and shower curtain. WC. Vanity unit wash hand basin with storage below and a fitted mirror above. Emergency pull cord.

SUMMARY

Horton Mill Court is one of McCarthy & Stone's Retirement Living PLUS developments and is all about making life easier. This includes providing a great value in-house restaurant, for when you don't feel like food shopping or cooking for yourself, a spacious homeowners' lounge for socialising and a guest suite where friends and family can stay for a modest fee. Whether you'd like help with chores such as housework or laundry or simply need a hand with anything else, our Estates Manager and on-site team are there to help.

Our support packages are totally flexible and personalised, so you only pay for the care you actually use. Within the service charge homeowners are allocated 1 hour's domestic assistance per week, which many homeowners choose to use to have their apartment cleaned. Alternatively, other tasks which you could choose to be carried out by our services team include: changing bedding, managing heating systems, shopping for food or posting letters or parcels.

The Your Life Care & Management team offer a range of personal care packages to suit your individual requirements. In addition to the 1 hour domestic assistance included in your service charge, are an assortment of bespoke packages on offer to suit the individual needs of each homeowner. These comprise: Domestic Support, such as ironing & laundry or

shopping; Personal Care, e.g medication or companionship (please speak to the Property Consultant for further details and a breakdown of charges).

For your reassurance and safety the development has 24-hour on-site staffing, security camera entry systems and a 24-hour emergency call system. Additionally, the flat has its own house alarm.

Horton Mill Court has a homeowners' lounge which provides a superb venue for socialising with friends and family. If your guests have travelled from afar, they can extend their stay by booking into the development Guest Suite (usually for a fee of £25 per night, subject to availability). For added convenience there is an onsite table service restaurant with freshly-cooked meals, provided every day for a modest fee.

SERVICE CHARGE (BREAKDOWN)

- Cleaning of communal windows
- Water rates for communal areas and apartments
- Electricity, heating, lighting and power to communal areas
- 24 hour emergency call system
- Upkeep of gardens and grounds
- Repairs and maintenance to the interior and exterior communal areas
- Contingency fund including internal and external redecoration of communal areas
- Buildings insurance

The Service charge does not cover external costs such as your Council Tax, electricity or TV. To find out more about the service charges please contact your Property Consultant or House Manager.

Service charge: £11,628.96 per annum (up to financial year end 30/09/2024).

CAR PARKING (PERMIT SCHEME)

Parking is by allocated space subject to availability. The fee is usually £250 per annum, but may vary by development. Permits are available on a first come, first served basis. Please check with the House Manager on site for availability.

LEASE INFORMATION

Ground Rent: £510 per annum
Ground rent review: 1st Jan 2029
Lease Length: 125 years from 1st Jan 2014

ADDITIONAL INFORMATION & SERVICES

- Superfast Fibre Broadband available
- Mains water and electricity
- Electric room heating
- Mains drainage

