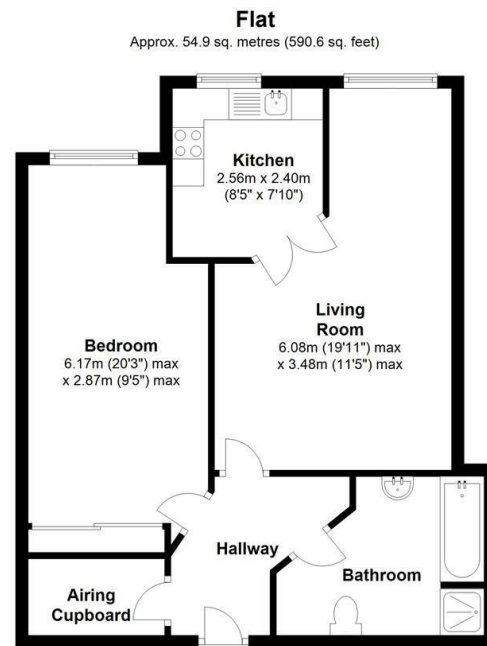


McCARTHY STONE RESALES

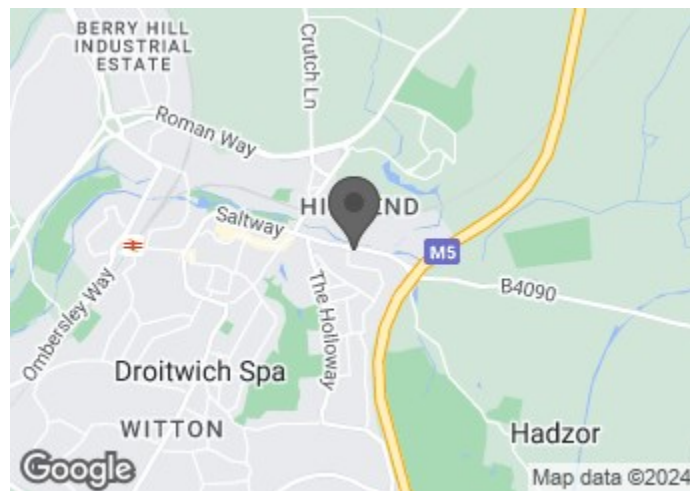
39 HORTON MILL COURT HANBURY ROAD, DROITWICH, WR9 8GD



Total area: approx. 54.9 sq. metres (590.6 sq. feet)

This floor plan is for illustrative purposes only and is not to scale. Where measurements are shown, these are approximate and should not be relied upon. Total square area includes the entirety of the property and any outbuildings/garages. Sanitary ware and kitchen fittings are representative only and approximate to actual position, shape and style. No liability is accepted in respect of any consequential loss arising from the use of this plan. Reproduced under licence from Evolve Partnership Limited. All rights reserved.
Plan produced using PlanUp.

COUNCIL TAX BAND: B



Energy Efficiency Rating		Current	Potential
Very energy efficient - lower running costs			
(92 plus) A			
(81-91) B		83	83
(69-80) C			
(55-68) D			
(39-54) E			
(21-38) F			
(1-20) G			
Not energy efficient - higher running costs			



McCARTHY STONE RESALES

This floor plan is not drawn to scale and is for illustrative purposes only. Any measurements, floor areas (including any total floor area), openings and orientation are approximate and for guidance only. McCarthy Stone Resales do not take liability for any error, omission or misstatement. All parties must rely on their own inspections. It should not be assumed that any furniture or fittings contained in the photographs are included in any sale. All details referring to time and distances to localities are approximate. Details regarding any common charges and other applicable fees are provided by the seller and should not be relied on without verification and further checks made through a solicitor/conveyancer. Please contact the Property Consultant for further information that Appliances (including central heating) have not been tested, therefore it cannot be assumed that they are in good working order. All interested parties are advised to check availability and make an appointment before travelling to view the property to avoid disappointment or wasted time or travel expenses. The details contained within this brochure are for information purposes only and do not form part of any agreement. All purchases will be subject to contract terms. © All artwork (photos and floorplans) and written content are the sole property and copyright of McCarthy & Stone Resales Limited and are legally protected by UK & International copyright laws. Under no circumstance may you download, reproduce, publish or distribute any content for commercial purposes, without prior written permission from McCarthy Stone Resales. Unauthorised duplication or usage for commercial purposes is prohibited by the Copyright law and will be prosecuted.



A ONE BEDROOM FIRST FLOOR McCARTHY & STONE RETIREMENT LIVING PLUS APARTMENT (previously known as Assisted Living). ONE HOUR OF DOMESTIC ASSISTANCE INCLUDED PER WEEK.

PRICE REDUCTION

ASKING PRICE £125,000 LEASEHOLD

For further details, please call **0345 556 4104**

resales@mccarthyandstone.co.uk | mccarthyandstoneresales.co.uk

HORTON MILL, COURT, HANBURY ROAD,

1 BEDROOMS £125,000

HORTON MILL COURT

Horton Mill Court is one of McCarthy & Stones Retirement Living PLUS range (formally Assisted Living). The development is equipped to provide extra care and assistance via a bespoke care package that suits individual needs. An Estates Manager is on hand to manage the day to day running of the development and attend to any queries you may have. Within the service charge homeowners are allocated 1 hours domestic assistance per week, however, additional hours can be arranged by prior appointment. There are a range of personal care packages to suit your requirements - these are provided by the onsite CQC registered care agency. For your reassurance the development is fitted with 24-Hour CCTV and a secure entry system. The development has a homeowners' lounge for socialising with friends and family and, for your convenience, an onsite restaurant with freshly cooked meals provided everyday. Communal Laundry Room and service. Set in the heart of the spa town of Droitwich, Horton Mill Court is part of McCarthy & Stone's Retirement Living PLUS range (formally assisted living). The town's historic town centre is located nearby offering a mix of old retail traditions and chain store shopping outlets. The local train station is located approximately one mile from the development, and bus routes give access to Worcester and Birmingham City centre. It is a condition of purchase that residents must meet the age requirement of 70 years or of age or over.

ENTRANCE HALL

Emergency intercom. Ceiling light fitting. Door to walk in airing cupboard housing the hot water tank and shelving.

LIVING ROOM

A beautifully bright and spacious room with space for dining furniture. Feature fireplace with electronic fire. Two ceiling light points. TV and telephone point. Double doors leading to;

KITCHEN

Featuring fully integrated appliances comprising of easy access cooker; fridge and freezer. Induction hob with extractor hood above. Single drainer sink unit with mixer taps has a double glazed window situated above.

BEDROOM

Double glazed window. TV and telephone point. Sliding mirrored doors to built in wardrobe with plenty of hanging and storage space. Emergency pull-cord.

SHOWER ROOM

Purpose built wet room with non slip safety flooring. Low level bath. Shower unit with curtain and grab rails. Vanity unit with inset sink and mirror above. Heated towel rail. Emergency pull-cord.

SERVICE CHARGE (BREAKDOWN)

- Cleaning of communal windows
- Water rates for communal areas and apartments
- Electricity, heating, lighting and power to communal areas

- 24 hour emergency call system
- Upkeep of gardens and grounds
- Repairs and maintenance to the interior and exterior communal areas
- Contingency fund including internal and external redecoration of communal areas
- Buildings insurance

The Service charge does not cover external costs such as your Council Tax, electricity or TV, but does include the cost of your House Manager, your water rates, our 24 hour emergency call system, the heating and maintenance of all communal areas, exterior property maintenance and gardening. To find out more about the service charges please contact your Property Consultant or House Manager.

Service charge: £8,547.12 per annum (for financial year end 30/09/2024).

CAR PARKING PERMIT SCHEME-SUBJECT TO AVAILABILITY

Parking is by allocated space subject to availability. The fee is usually £250 per annum, but may vary by development. Permits are available on a first come, first served basis. Please check with the House Manager on site for availability.

LEASE INFORMATION

125 years from 1st Jan 2014
Ground rent £435 per annum
Ground rent review: 1st Jan 2029

ADDITIONAL INFORMATION & SERVICES

- Superfast Fibre Broadband available
- Mains water and electricity
- Electric room heating
- Mains drainage

