



Earlsmead Road, Kensal Green

London NW10

£500,000



Earlsmead Road

Kensal Green, London NW10

Lovely split-level apartment in the heart of Kensal Green.

Council Tax band: C

Tenure: Leasehold

EPC Energy Efficiency Rating: C

EPC Environmental Impact Rating: G

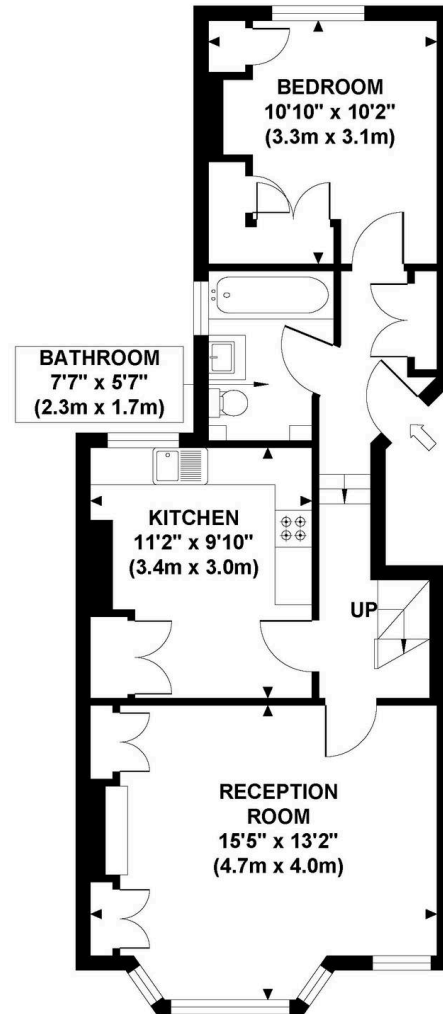


EARLSMEAD ROAD

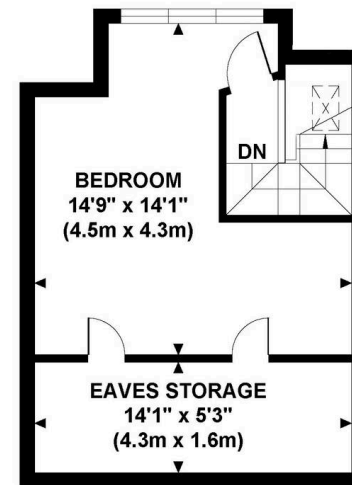
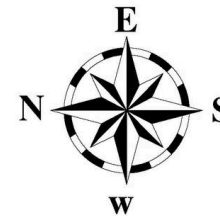
Approximate Gross Internal Area

754 sq ft / 70.05 sq m

(Excluding Eaves Storage)



FIRST FLOOR
GROSS INTERNAL
FLOOR AREA 556 SQ FT



SECOND FLOOR
GROSS INTERNAL
FLOOR AREA 198 SQ FT

Although every attempt has been made to ensure accuracy,
all measurements are approximate and no responsibility is taken for any error, omission, or mid-statement.
This floor plan is for illustrative purposes only and not to scale. Measured in accordance to RICS standards.
GB PRO PHOTOS



Garrison Estates

20 College Parade, Salusbury Road, Queens Park – NW6 6RN

020 4511 4820 • contact@garrisonestates.co.uk • www.garrisonestates.co.uk/