



4 Marne Street, Queens Park

London

£1,595,000





## 4 Marne Street

Queens Park, London

A rare spacious 4-bed double-fronted house with parking permits, modern kitchen, private garden, loft conversion. Tranquillity meets elegance in chic Queens Park locale.

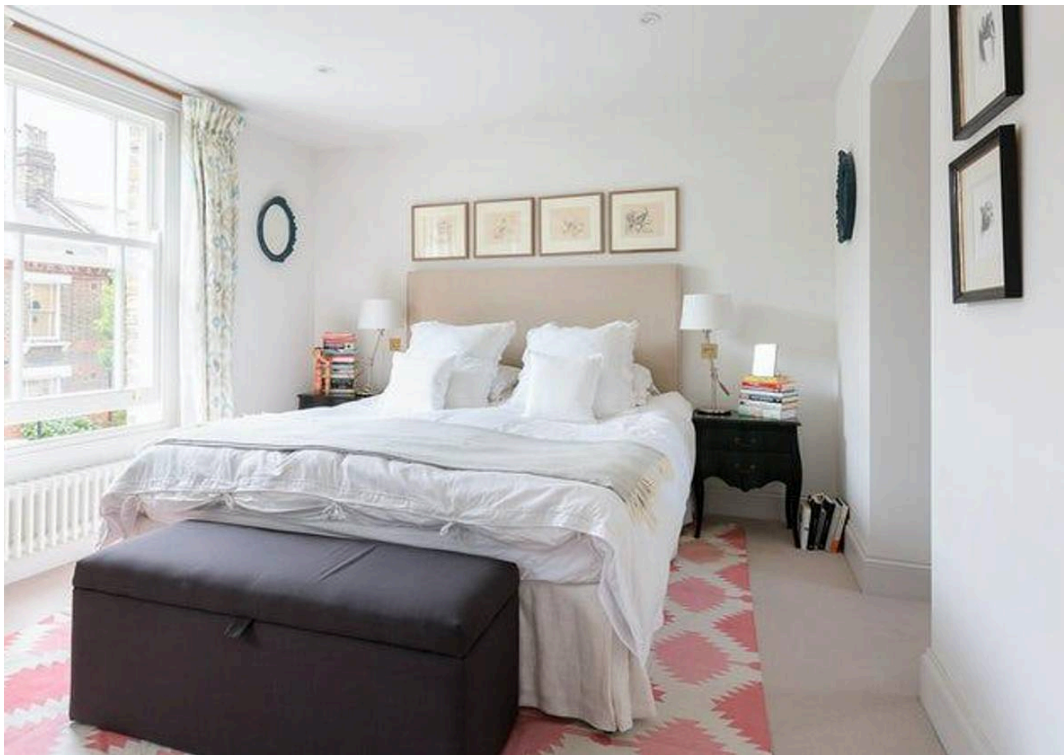
Council Tax band: E

Tenure: Freehold

EPC Energy Efficiency Rating: C

EPC Environmental Impact Rating:







## Marne Street, London, W10

Approximate Gross Internal Area With Restricted Area 140 sqm / 1507 sqft

Approximate Gross Internal Area Without Restricted Area 129 sqm / 1389 sqft



Ground Floor

First Floor

Second Floor

THIS FLOOR PLAN IS PRODUCED FOR GARRISON ESTATES SUBMITTED BY ARCHIMEDIA web: [www.archi-media.co.uk](http://www.archi-media.co.uk)

Whilst every attempt has been made to ensure the accuracy of the floor plan contained here, measurements of doors, windows and rooms are approximate and no responsibility is taken for any error, omission or misstatement. These plans are for representation purposes only and should be used as such by any prospective buyer or lease. Specifically no guarantee is given on the gross internal floor area of the property if quoted on this plan and any figures given is initial guidance only and should be treated as such.





## Garrison Estates

20 College Parade, Salusbury Road, Queens Park – NW6 6RN

020 4511 4820 • [contact@garrisonestates.co.uk](mailto:contact@garrisonestates.co.uk) • [www.garrisonestates.co.uk/](http://www.garrisonestates.co.uk/)