



56 Powis Square, Notting Hill

London

£1,225,000



56 Powis Square

Notting Hill, London

Stylish 2-bed, 2-bath duplex in vibrant Notting Hill with large west-facing private garden. Modern kitchen, storage, and turn-key purchase. Close to Portobello Road. Urban oasis with Kensington & Chelsea parking permit, ideal for sophisticated city living. Council Tax band: E

Tenure: Leasehold

EPC Energy Efficiency Rating: C

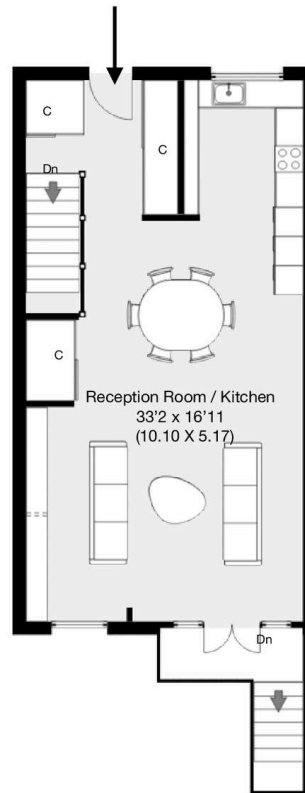
EPC Environmental Impact Rating:



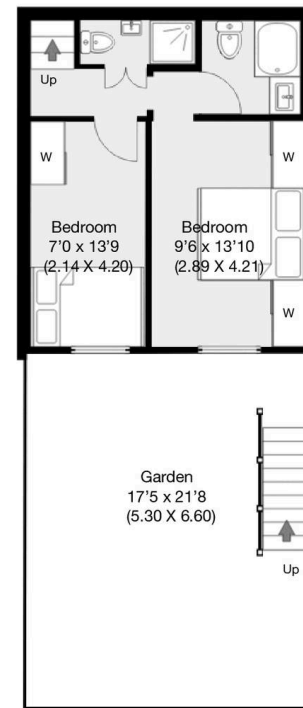


Powis Square, London, W11

Approximate Gross Internal Area 88 sqm / 950 sqft



Ground Floor



Lower Ground Floor

THIS FLOOR PLAN IS PRODUCED FOR GARRISON ESTATES SUBMITTED BY **ARCHIMEDIA** web: www.archi-media.co.uk

Whilst every attempt has been made to ensure the accuracy of the floor plan contained here, measurements of doors, windows and rooms are approximate and no responsibility is taken for any error, omission or misstatement. These plans are for representation purposes only and should be used as such by any prospective buyer or lease. Specifically no guarantee is given on the gross internal floor area of the property if quoted on this plan and any figures given is initial guidance only and should be treated as such.



Garrison Estates

20 College Parade, Salusbury Road, Queens Park – NW6 6RN

020 4511 4820 • contact@garrisonestates.co.uk • www.garrisonestates.co.uk/