



66 Leigh Gardens, Kensal Rise

London

£1,950,000





66 Leigh Gardens

Kensal Rise, London

A stunning double fronted house situated in the heart of Kensal Rise within this beautiful tree lined road.

Council Tax band: G

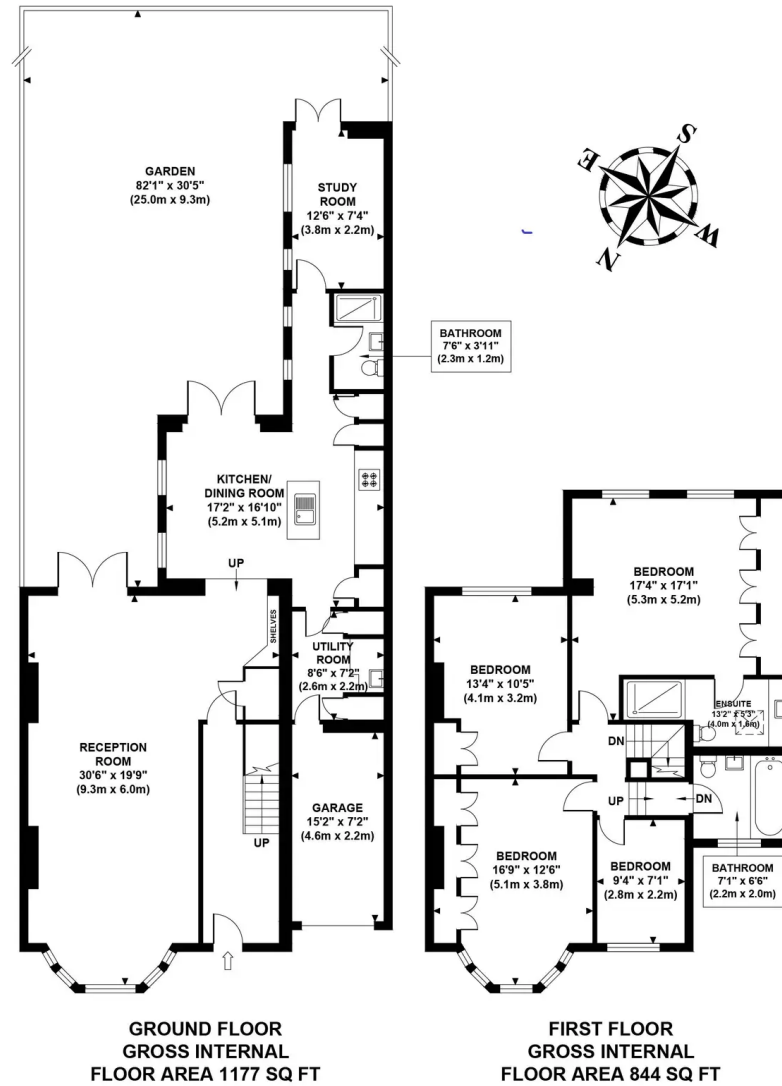
Tenure: Freehold

EPC Energy Efficiency Rating: C

EPC Environmental Impact Rating:

LEIGH GARDENS, LONDON NW10

Approximate Gross Internal Area
2021 sq ft / 187.75 sq m
(Including Garage Area)



Although every attempt has been made to ensure accuracy,
all measurements are approximate and no responsibility is taken for any error, omission, or mid-statement.
This floor plan is for illustrative purposes only and not to scale. Measured in accordance to RICS standards.
GB PRO PHOTOS



Garrison Estates

22 Notting Hill Gate, London - W11 3JE

020 4511 4820 • contact@garrisonestates.co.uk • www.garrisonestates.co.uk/