



London Road

CORWEN • GUIDE PRICE £695,000

Two Adjoining Grade II-Listed Properties in Corwen – 6 Beds, Mixed-Use Residential & Holiday Let with Income Potential in the Dee Valley AONB

- Two Grade II-listed adjoining properties sold as a single freehold lot
- 6 Bedroom, 5 Bathrooms with approx. 2944sq Ft of space.
- Operates as a mixed-use residence and holiday let with strong income potential
- Underfloor heating throughout both properties plus two wood-burning stoves
- Original features retained, including vaulted cell corridor and barred gate
- Private courtyard with hot tub, BBQ area, and outdoor seating
- Flexible layout ideal for multi-generational living, investment or lifestyle use
- Off road gated parking
- Central Corwen location in the Clwydian Range & Dee Valley AONB
- Easy access to A5, heritage railway, local shops, schools, and walking trails

DESCRIPTION

Corwen Old Police Station & The Court House present a unique opportunity to acquire two architecturally striking and sympathetically modernised Grade II-listed buildings being sold as a single freehold lot. Together, they provide approximately 2,944 sq ft of beautifully restored accommodation and offer an array of lifestyle and commercial possibilities.

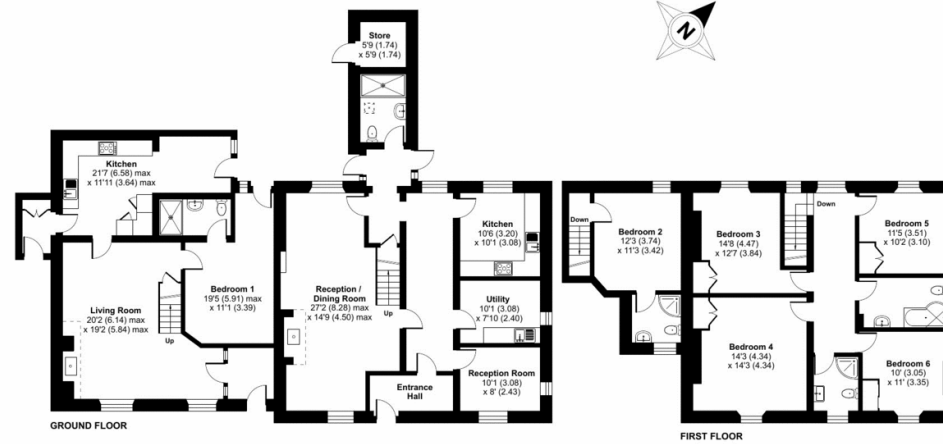








Approximate Area = 2911 sq ft / 270.4 sq m
 Outbuilding = 33 sq ft / 3 sq m
 Total = 2944 sq ft / 273.4 sq m
 For identification only - Not to scale



Floor plan produced in accordance with RICS Property Measurement 2nd Edition, Incorporating International Property Measurement Standards (IPMS2 Residential). © richcom 2025. Produced for Halls. REF: 1304188



Thomas Dainty
 Partner
 0203 879 0742
 thomas.dainty@hardinggreen.com

Important Notice. We would like to inform prospective purchasers that these sales particulars have been prepared as a general guide only. A detailed survey has not been carried out, nor the services, appliances and fittings tested. Room sizes should not be relied upon for furnishing purposes and are approximate. If floor plans are included, they are for guidance only and illustration purposes only and may not be to scale. If there are any important matters likely to affect your decision to buy, please contact us before viewing the property.



FIND OUT MORE