



Cathles Road

CLAPHAM SOUTH • GUIDE PRICE £5,750 PER MONTH

A refurbished four-bedroom home in the vibrant heart of Clapham South with 1760 of square foot and a south facing garden.

- Refurbished and beautifully designed
- 1760 square foot
- Moments from Clapham South Station
- 4 bedrooms, 3 reception rooms

DESCRIPTION

The property opens to an entrance hall leading onto the bright and spacious double reception room, with a stunning dining area with banquette seating. At the rear of the property has been fully extended and boasts a contemporary open plan kitchen/diner and direct access on to a south facing garden. The house also offers basement storage and a downstairs WC.

Up on the first floor the property has three large double bedrooms and a modern family bathroom. Up the top floor you have a gorgeous split level master suite, which boasts a spacious bedroom, walk in dressing room and ensuite bathroom.

Cathles Road runs off Balham Hill and is close to the many local shops and restaurants. Amenities have been greatly improved by the nearby Marks and Spencer food store and Tesco's close to Clapham South underground station (Northern Line, zone 2) which also provides links to both the City and the West End. The wide open spaces of Clapham Common are also nearby.

Available for a part furnished long term let from 1st July 2025

TERMS

Price: Guide Price £5,750 per month

Local Authority: Wandsworth

Council Tax: Wandsworth

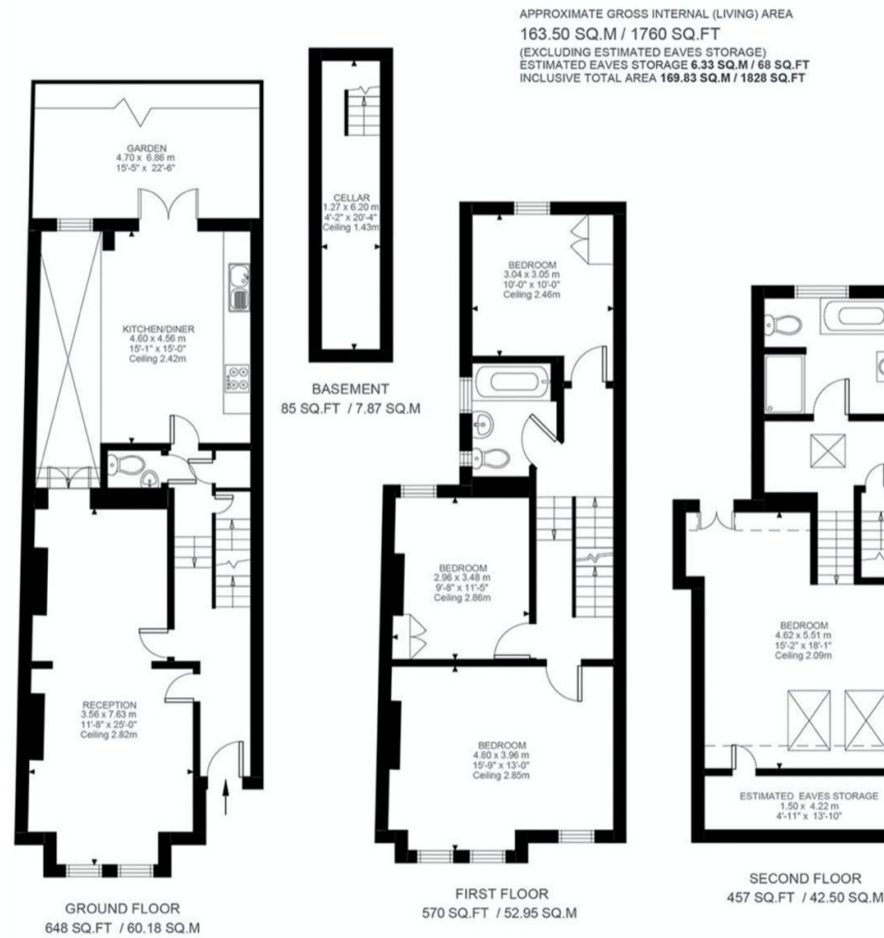
Energy Rating: 64.00











Robbie Gittins
 Partner
0203 879 0723
 robbie.gittins@hardinggreen.com

Important Notice. We would like to inform prospective tenants that these lettings particulars have been prepared as a general guide only. A detailed survey has not been carried out, nor the services, appliances and fittings tested(remove). Room sizes should not be relied upon for furnishing purposes and are approximate. If floor plans are included, they are for guidance only and illustration purposes only and may not be to scale. If there are any important matters likely to affect your decision to rent, please contact us before viewing the property.



FIND OUT MORE