



Bartholomew Close

BARBICAN • OFFERS OVER £850,000

This stylish two-bedroom, two-bathroom apartment in the vibrant Barbican area features modern finishes, en-suite bathroom, roof terrace, balcony, and utility room. It also offers underground parking and is conveniently close to the city centre.

- Two double bedrooms
- Modern finishes throughout
- Balcony, and large private roof terrace plus access to comunal roof terrace
- Two underground parking spots and day porter
- Seperate utility room
- 1st Floor with lift access
- Easy access to transportation and all the amenities of city living

DESCRIPTION

Beautiful first-floor, two-bed, two-bath apartment on a quiet street in the Barbican area, just minutes from the city centre.

With modern finishes, an open-concept layout, sleek kitchen, and balcony views, this apartment is perfect for entertaining. The spacious principal bedroom includes an en-suite and built-in storage, while both bedrooms are generous doubles. Additional features include a private roof terrace, utility room with space for a separate washer and dryer, and ample storage.

Underground parking with two allocated spaces and a concierge service provide extra convenience. Located near Barbican, Farringdon, and St. Paul's stations (all under 0.3 miles), the apartment offers easy access to shops, cafés, and entertainment.

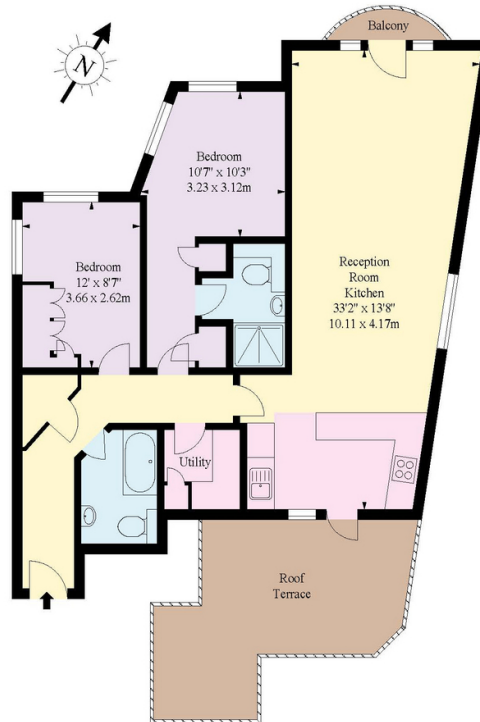
TERMS





Bartholomew Close, EC1A

Approx. Gross Internal Area *
922 Ft² - 85.65 M²



First Floor

Illustration For Identification Purposes Only. Not To Scale

* As Defined by RICS - Code of Measuring Practice
© International Floorplans.
Tel 0094 115 345958
www.ifpl.lk



Benjamin Scrace

Partner

0208 176 2000

benjamin.scrace@hardinggreen.com



Robbie Gittins

Consultant

02038790723

robbie.gittins@hardinggreen.com

Important Notice. We would like to inform prospective purchasers that these sales particulars have been prepared as a general guide only. A detailed survey has not been carried out, nor the services, appliances and fittings tested. Room sizes should not be relied upon for furnishing purposes and are approximate. If floor plans are included, they are for guidance only and illustration purposes only and may not be to scale. If there are any important matters likely to affect your decision to buy, please contact us before viewing the property.



FIND OUT MORE