



# Manor

• GUIDE PRICE £499,950



Charming Grade II listed cottage in Shifnal, featuring three spacious bedrooms and modern family living. Enjoy the idyllic countryside location with private gardens and woodland. Excellent transport links to Birmingham, Telford, Shrewsbury, and London.

- Charming Grade II Listed Property
- Idyllic Countryside Location
- Three Spacious Bedrooms
- Double Glazing Throughout
- Modern Family Living
- Beautiful Period Features
- Private Gardens and Woodland
- New Klargest Sewage Treatment System
- Excellent Transport Links
- Private Parking and Access

## DESCRIPTION

This charming Grade II listed cottage in Shifnal offers a blend of modern family living and beautiful period features. The property includes three spacious bedrooms, a study, and a modern family bathroom. With double glazing throughout and oil heating, the home is designed for comfortable living.

The cottage is set in an idyllic countryside location with private gardens and woodland, perfect for those who love outdoor living. A new Klargest sewage treatment system ensures efficient waste management. The property also features wood burners for cosy evenings in and private parking with driveway access.

Shifnal provides excellent transport links, making it easy to commute to Birmingham, Telford, and Shrewsbury. London is just two hours away by train, offering the convenience of city access while enjoying rural tranquillity. The area boasts good









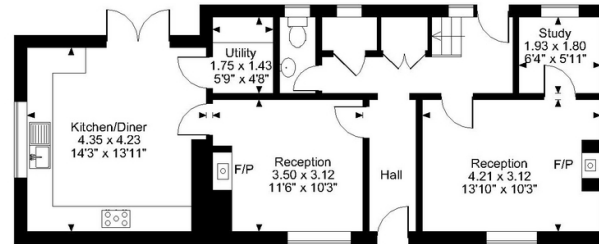




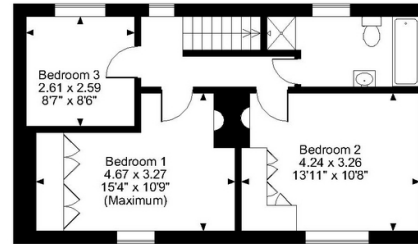




Keepers Cottage, Shifnal  
Approximate Gross Internal Area  
1207 Sq Ft/112 Sq M



Ground Floor



First Floor

**FOR ILLUSTRATIVE PURPOSES ONLY - NOT TO SCALE**

The position & size of doors, windows, appliances and other features are approximate only.  
© ehouse. Unauthorised reproduction prohibited. Drawing ref. dig/8622812/JCR



**Thomas Dainty**  
Consultant

**02038790742**

thomas.dainty@hardinggreen.com

Important Notice. We would like to inform prospective purchasers that these sales particulars have been prepared as a general guide only. A detailed survey has not been carried out, nor the services, appliances and fittings tested. Room sizes should not be relied upon for furnishing purposes and are approximate. If floor plans are included, they are for guidance only and illustration purposes only and may not be to scale. If there are any important matters likely to affect your decision to buy, please contact us before viewing the property.



FIND OUT MORE