



The Hem

• OFFERS IN THE REGION OF £1,495,000

Hem Mill offers a blend of rural charm and modern convenience, set in the beautiful Shropshire countryside. This period property, dating back to the 17th century, provides flexible living over three storeys. Contact us today to explore this unique home.

- Detached House
- 5 Bedrooms
- Modern Breakfast Kitchen
- Luxurious Family Bathroom with Sauna
- Working Water Wheel
- 2 Acre Pond
- 10 Acres of Land
- Range of outbuildings with planning
- Accommodation over three storeys
- Outside Kitchen

DESCRIPTION

Hem Mill stands in a charming, backwater setting and is surrounded by glorious, open Shropshire countryside. Despite the rural idyll, the residence is still within easy reach of Shifnal Town Centre with its wide range of local facilities and the extensive amenities provided by Telford. Communications are excellent with the M54 being within a few minutes' drive facilitating fast access to Shrewsbury, Birmingham and beyond. Train stations in both Telford and Shifnal offer direct services to Birmingham and London Euston.

Hem Mill is an exceptionally attractive period property believed to date from the 17th Century with accommodation over three storeys. The house has been well maintained and improved by the current sellers, benefiting from high-quality fixtures and fittings throughout. One of the principal attractions is the fine grounds within which it stands, including sweeping lawns, external living areas, and a two-acre lake.





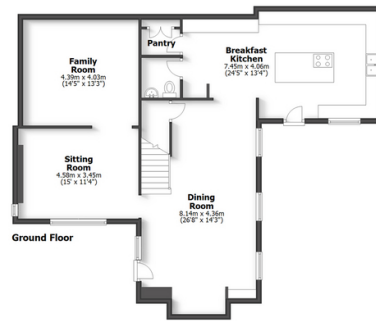




HEM MILL
THE HEM, SHIFNAL



HOUSE: 295.3sq.m. 3179sq.ft.
OUTSIDE KITCHEN: 12.2sq.m. 131sq.ft.
TOTAL: 307.5sq.m. 3310sq.ft.
INTERNAL FLOOR AREAS ARE APPROXIMATE
FOR GENERAL GUIDANCE ONLY - NOT TO SCALE
POSITION & SIZE OF DOORS, WINDOWS, APPLIANCES
AND OTHER FEATURES ARE APPROXIMATE



Thomas Dainty
Consultant
02038790742
thomas.dainty@hardinggreen.com

Important Notice. We would like to inform prospective purchasers that these sales particulars have been prepared as a general guide only. A detailed survey has not been carried out, nor the services, appliances and fittings tested. Room sizes should not be relied upon for furnishing purposes and are approximate. If floor plans are included, they are for guidance only and illustration purposes only and may not be to scale. If there are any important matters likely to affect your decision to buy, please contact us before viewing the property.



FIND OUT MORE