



North Audley Street

MAYFAIR • GUIDE PRICE £6,500 PER WEEK

An expertly refurbished four-bedroom lateral apartment with air-conditioning, lift access and a day porter in the heart of Mayfair, W1K

- Portered
- Expertly Refurbished
- Air Conditioning
- Four Double Bedrooms
- Three Bathrooms
- First Floor
- Central Mayfair Location

DESCRIPTION

The apartment opens with a stunning reception hall with Porta Romana mirrors and detailed ceiling lights. This leads through to a large open-plan dining reception room flooded with light with bespoke Porta Romana wall sconce lights and mirrors. The attention to detail continues with bespoke cabinetry by Neatsmith, custom electric blinds, integrated zoned Sonos sound system and Lutron lighting throughout.

Arranged with a separate breakfast kitchen fitted with Miele appliances - two fridge-freezers, dishwasher, induction hob and a separate utility room with a washing machine and separate dryer makes it ideal for hosting guests.

The principal bedroom ensuite is fitted with a luxurious Italian standalone bath, separate shower and double basin. The bedroom offers plenty of storage with bespoke wardrobes. Bedroom two is served by an ensuite shower room with built in storage. The further two guest bedrooms are served by a separate shower room where one bedroom would make a perfect home office or guest bedroom.

Overlooking Providence Court, the apartment is quiet and private while still being in the hub of Mayfair.

TERMS

Price: Guide Price £6,500 per week







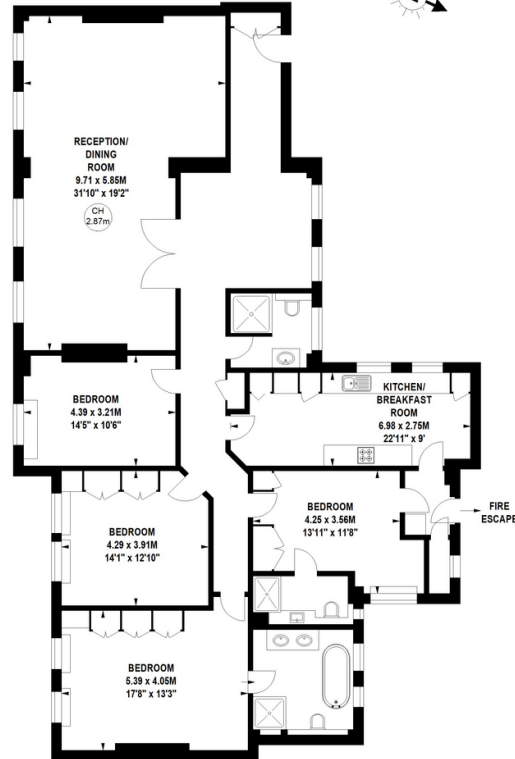


Audley House,
North Audley Street,
Mayfair, W1K

HardingGreen

Key:
CH - Ceiling Height

Approximate gross internal area
195.65 sq m / 2106 sq ft



First Floor

Not to scale, for guidance only and must not be relied upon as a statement of fact.
All measurements and areas are approximate only



Robbie Gittins
Consultant
02038790723
robbie.gittins@hardinggreen.com



Benjamin Scrace
Partner
0208 176 2000
benjamin.scrace@hardinggreen.com

Important Notice. We would like to inform prospective tenants that these lettings particulars have been prepared as a general guide only. A detailed survey has not been carried out, nor the services, appliances and fittings tested(remove). Room sizes should not be relied upon for furnishing purposes and are approximate. If floor plans are included, they are for guidance only and illustration purposes only and may not be to scale. If there are any important matters likely to affect your decision to rent, please contact us before viewing the property.



FIND OUT MORE