



Shifnal Manor

• GUIDE PRICE £745,000

Shifnal Manor, a restored 14th-century semi-detached estate, features 6 bedrooms, grand fireplaces, and a luxury kitchen. Set on 2 private acres in Shropshire, this property offers period charm and modern amenities. Located near Shifnal, with easy access to Telford, Wolverhampton, and motorways.

- For Sale by Modern Auction – T & C's apply
- Subject to Reserve Price
- The Modern Method of Auction
- Buyers fees apply
- Six Bedrooms
- Set within 2 acres of private, landscaped grounds.
- Gravelled parking area with original coach ring
- Luxurious en-suite bathrooms, including a master suite with a clawfoot bath and double shower
- Luxurious Kitchen with Granite Surfaces
- Grand Reception Rooms

DESCRIPTION

Experience the elegance and history of Shifnal Manor, a 14th-century semi-detached estate that has been carefully restored to combine modern luxury with period charm. Originally built at the end of the 14th century and later expanded by the Earl of Shrewsbury, The Manor is steeped in history, from its grand fireplaces and intricate plasterwork to its exposed beams and tall ceilings. The property features six bedrooms, including a master suite with a luxurious bathroom that boasts a clawfoot bath and double shower. The modern fitted kitchen with granite work surfaces is ideal for both everyday use and entertaining. Multiple grand reception rooms provide ample space for gatherings and open onto the beautifully landscaped gardens.

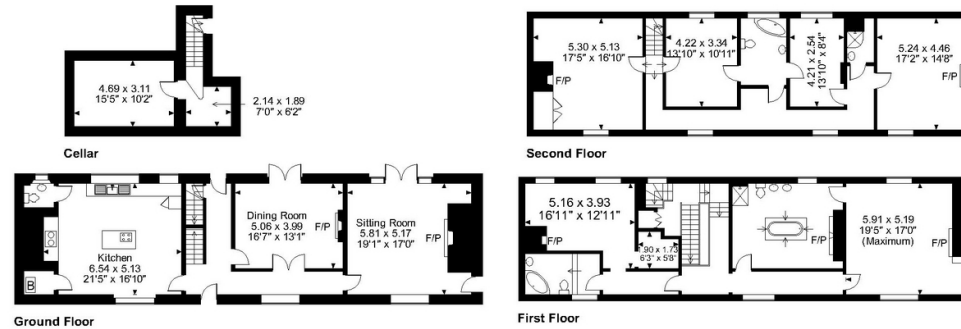








Manor House, Manor, Shifnal
Approximate Gross Internal Area
3695 Sq Ft/343 Sq M



FOR ILLUSTRATIVE PURPOSES ONLY - NOT TO SCALE

The position & size of doors, windows, appliances and other features are approximate only.
© ehouse. Unauthorised reproduction prohibited. Drawing ref. dig/8617755/SS



Thomas Dainty

Consultant

02038790742

thomas.dainty@hardinggreen.com

Important Notice. We would like to inform prospective purchasers that these sales particulars have been prepared as a general guide only. A detailed survey has not been carried out, nor the services, appliances and fittings tested. Room sizes should not be relied upon for furnishing purposes and are approximate. If floor plans are included, they are for guidance only and illustration purposes only and may not be to scale. If there are any important matters likely to affect your decision to buy, please contact us before viewing the property.



FIND OUT MORE