



Abbey Road | | Abbeytown | CA7 4SB

£380,000



**david britton**  
ESTATES



## Key features

- Detached home
- 5 bedrooms
- 5 reception rooms
- 3 bathrooms
- Garage plus driveway parking for several vehicles
- Village location
- 2389 sq ft of accommodation
- Gardens

## Description

Superb detached five bedroomed family home, with accommodation sprawling over 2389 sq feet in the popular village of Abbeytown, nr Wigton.

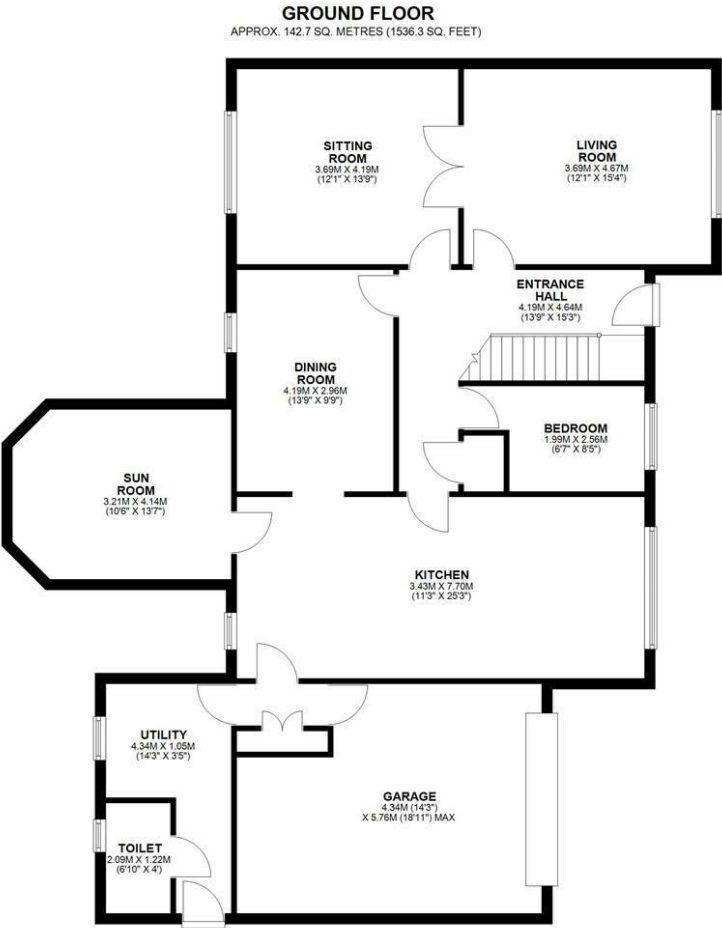
## Directions





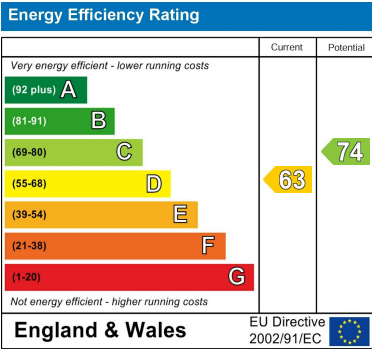


Floor plans



TOTAL AREA: APPROX. 236.2 SQ. METRES (2542.9 SQ. FEET)

All measurements and details within this floorplan are approximate and are provided for illustrative purposes only. While every reasonable effort has been made to ensure accuracy, no responsibility is accepted for any errors, omissions, or misstatements. This floorplan should not be relied upon as a statement of fact and does not form part of any offer or contract. Prospective purchasers are advised to verify all measurements and details to their own satisfaction. Fixtures, fittings, services, systems, and appliances shown have not been tested and no warranty is given as to their operability or efficiency. Plan produced using PlanUp.



Unit 3 Mason Court Gillan Way, Penrith 40 Business Park  
Penrith  
Cumbria  
CA11 9GR  
01768881111  
Sales@brittonestates.co.uk  
www.brittonestates.co.uk