



| Warwick Bridge | Carlisle | CA4 8RN

£500,000



**david britton**  
ESTATES



## Key features

- Detached barn conversion
- four bedrooms
- Two bathrooms
- Living room with mezzanine
- Kitchen diner
- Outside office/treatment room with composting toilet
- Large gardens/plot
- Exclusive development

## Description

Absolutely stunning four bedroomed barn conversion in an exclusive development on the edge of Warwick Bridge, Carlisle.

## Directions







# Floor plans

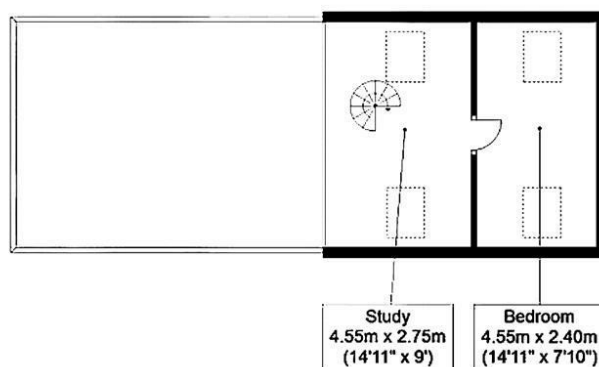
## Ground Floor

Approx. 135.8 sq. metres (1461.7 sq. feet)



## Mezzanine

Approx. 23.9 sq. metres (257.1 sq. feet)



Total area: approx. 159.7 sq. metres (1718.8 sq. feet)

Energy Efficiency Rating		
	Current	Potential
Very energy efficient - lower running costs		
(92 plus) A		
(81-91) B		
(69-80) C		72
(55-68) D		
(39-54) E	48	
(21-38) F		
(1-20) G		
Not energy efficient - higher running costs		
England & Wales		
EU Directive 2002/91/EC		



Unit 3 Mason Court Gillan Way, Penrith 40 Business Park  
 Penrith  
 Cumbria  
 CA11 9GR  
 01768881111  
 Sales@brittonestates.co.uk  
 www.brittonestates.co.uk