



Bankside | Lazonby | Penrith | CA10 1BN

Guide Price £285,000



david britton
ESTATES

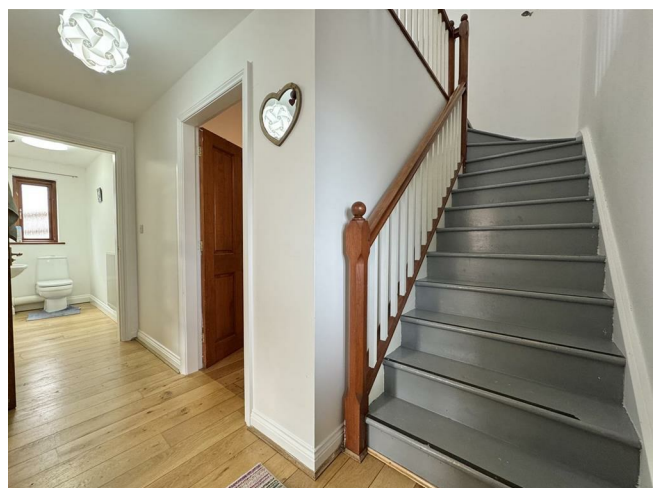
Key features

- Semi detached home
- four bedrooms
- Living room
- Kitchen diner
- Family bathroom
- WC
- Rear garden
- Parking for two vehicle's
- Eden Valley Village

Description

Superb modern four bedroomed semi detached home in the sought after Eden Valley Village of Lazonby

Directions



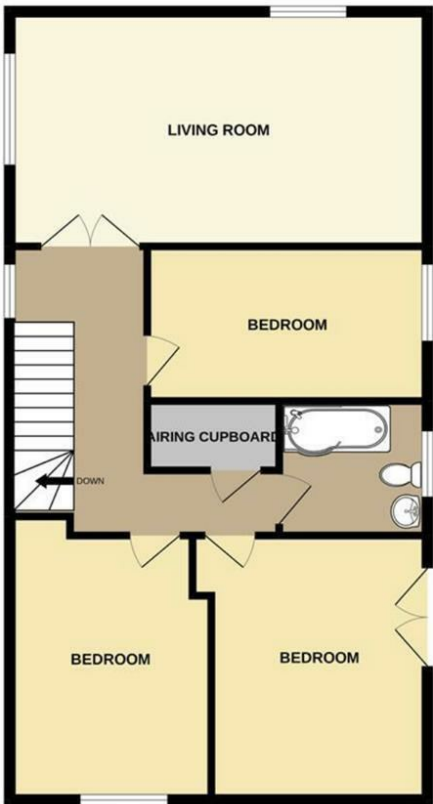


Floor plans

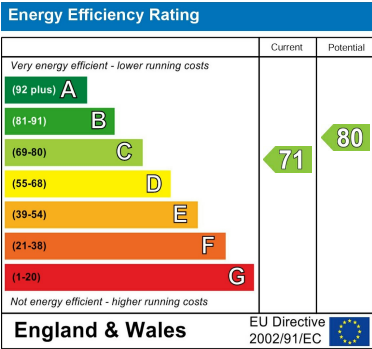
GROUND FLOOR
568 sq.ft. (52.8 sq.m.) approx.



1ST FLOOR
834 sq.ft. (77.5 sq.m.) approx.



TOTAL FLOOR AREA : 1402 sq.ft. (130.2 sq.m.) approx.



Unit 3 Mason Court Gillan Way, Penrith 40 Business Park
Penrith
Cumbria
CA11 9GR
01768881111
Sales@brittonestates.co.uk
www.brittonestates.co.uk