



Nether Row | Hesket Newmarket | Wigton | CA7 8LA

Guide Price £925,000



**david britton**  
ESTATES



## Key features

- Around 50 acres of land
- Three Bedroom Farmhouse
- A range of outbuildings
- Lake District National Park
- Rural yet accessible location
- In need of renovation in parts
- Shepherds Hut, Outdoor Kitchen and Ample Parking
- Further development potential (STP)
- Ideal for idyllic country living
- Fell rights & Stunning Views

## Description

Enjoying a stunning Lakeland setting with this traditional 3 Bedroom Farmhouse with adjoining barn, detached stone barn and further outbuildings and around 50 acres of ring-fenced land!

## Directions

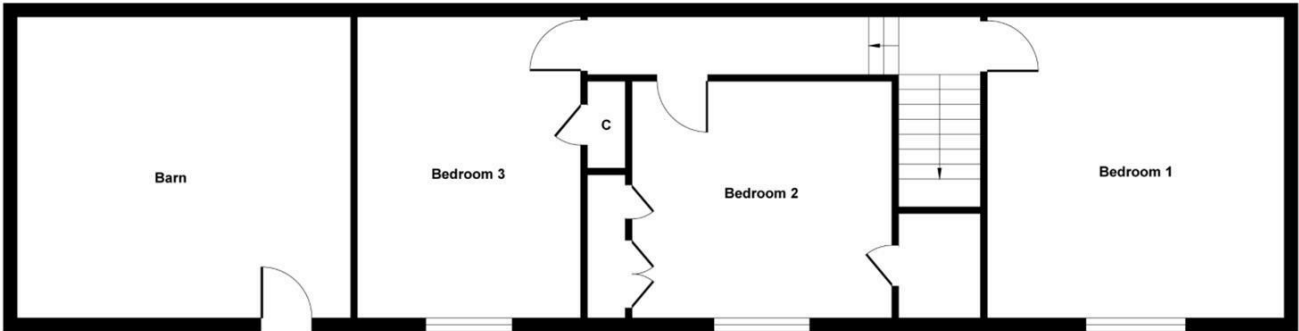






Floor plans

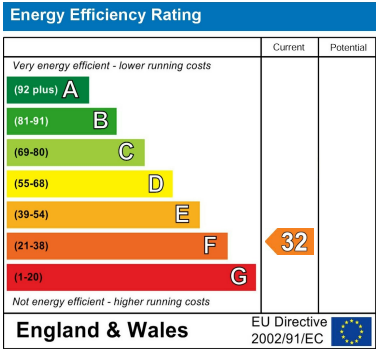
Hill Top Farm



First Floor



Ground Floor



Unit 3 Mason Court Gillan Way, Penrith 40 Business Park  
Penrith  
Cumbria  
CA11 9GR  
01768881111  
Sales@brittonestates.co.uk  
www.brittonestates.co.uk