



| Thrimby | Penrith | CA10 3EA

Guide Price £595,000



**david britton**  
ESTATES



## Key features

- **\*\* RARE TO THE MARKET - HOUSE WITH 2.5 ACRES OF LAND \*\***
- Beautiful 5 bedroom Barn Conversion
- Approx 2.5 acres of land, ideal for smallholding or equestrian use
- Superb rural position with wonderful countryside views
- Beautifully presented with generous proportions throughout
- 5 bedrooms; three with ensembles and one being on the ground floor
- Attached stone barn with further development potential (STP)
- Ample off road parking & generous lawned garden with decked area
- Excellent transport links to M6, Penrith and Eden Valley
- Close proximity to Lake District National Park

## Description

**\*\* Stunning Rural 5 bedroom home with 2.5 Acres of Land \*\***

An exceptional opportunity to acquire a substantial and beautifully renovated 5 bedroom barn conversion, sitting in a rural position, in the Eden Valley, just around 1 mile from village of Great Strickland

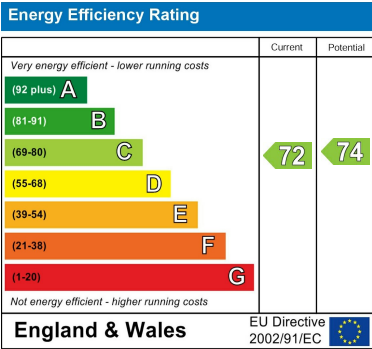
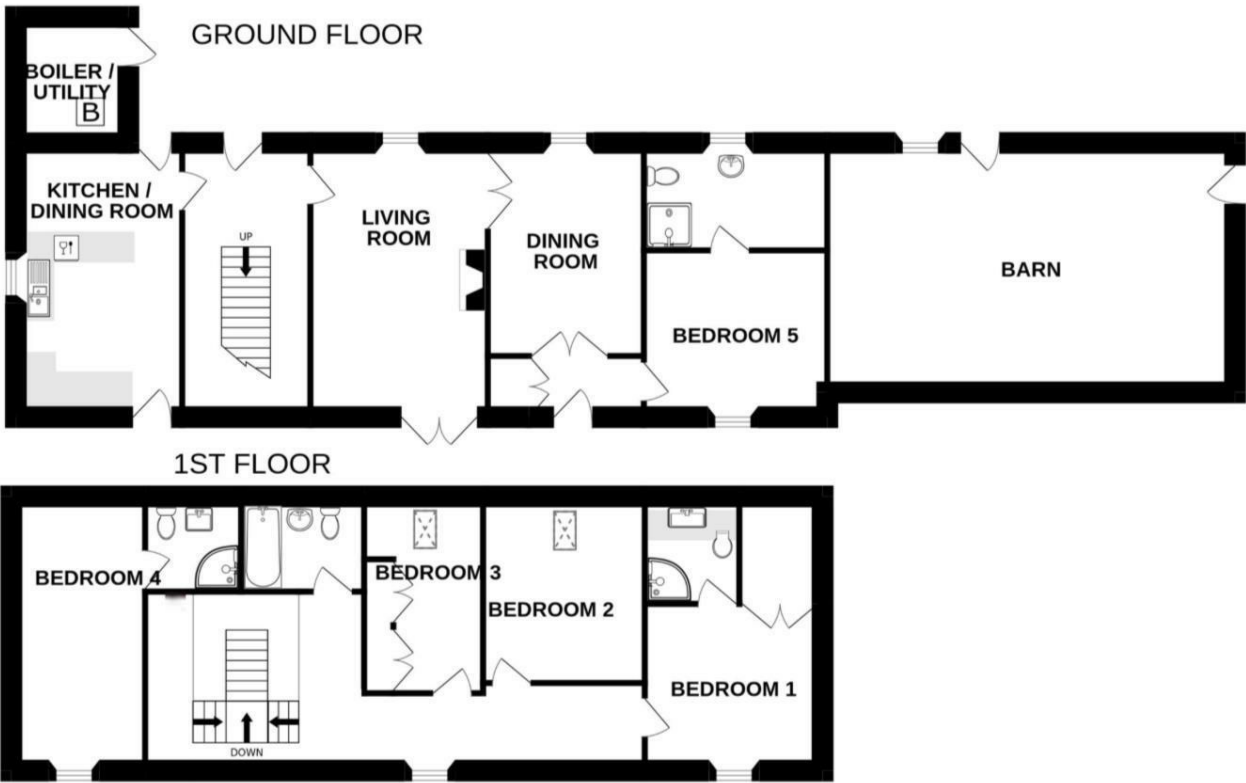
## Directions







Floor plans



Unit 3 Mason Court Gillan Way, Penrith 40 Business Park  
Penrith  
Cumbria  
CA11 9GR  
01768881111  
Sales@brittonestates.co.uk  
www.brittonestates.co.uk