



12 Swallows Rise | Tirril | Penrith | CA10 2JN

Guide Price £350,000



**david britton**  
ESTATES



## Key features

- Wonderful semi-detached home
- 3 bedrooms
- Luxurious fixtures & fittings
- New Build home
- In desirable village location
- High Specification
- Two bathrooms
- Off road parking
- Close to Ullswater & Pooley Bridge
- 10 year build warranty

## Description

Discover the perfect blend of luxury, location, and style in the first phase of Stonewood Homes' captivating new development in Tirril, nestled on the edge of the stunning Lake District National Park.

Early reservation is essential to secure your dream home in this sought-after development.

Please note that these properties are currently under construction, and site visits are available by appointment only.

## Directions



### SOCKBRIDGE

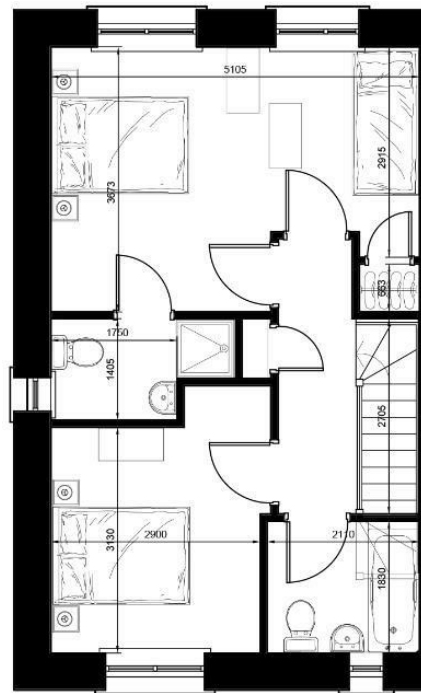
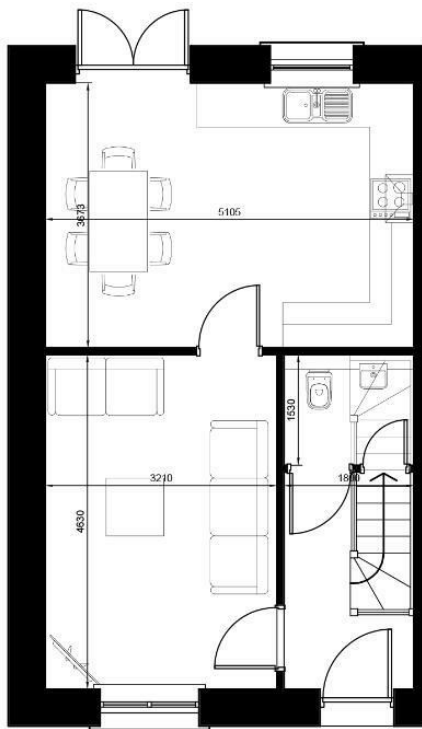
- House Type 1
- House Type 2
- House Type 3
- House Type 4
- House Type 5
- House Type 6







## Floor plans



Unit 3 Mason Court Gillan Way, Penrith 40 Business Park

Penrith

Cumbria

CA11 9GR

01768881111

[Sales@brittonestates.co.uk](mailto:Sales@brittonestates.co.uk)

[www.brittonestates.co.uk](http://www.brittonestates.co.uk)