



| Threlkeld | Keswick | CA12 4SZ

Price Guide £650,000



**david britton**  
ESTATES



## Key features

- Detached bungalow
- Three bedrooms
- Three reception rooms
- Two bathrooms
- Double garage
- Gardens
- Stand alone position
- Lake District National Park
- Amazing views

## Description

Beautiful three bedroomed detached bungalow set in one of the most stunning locations, with elevated views over the Lakeland fells, Threlkeld, Lake District National Park.

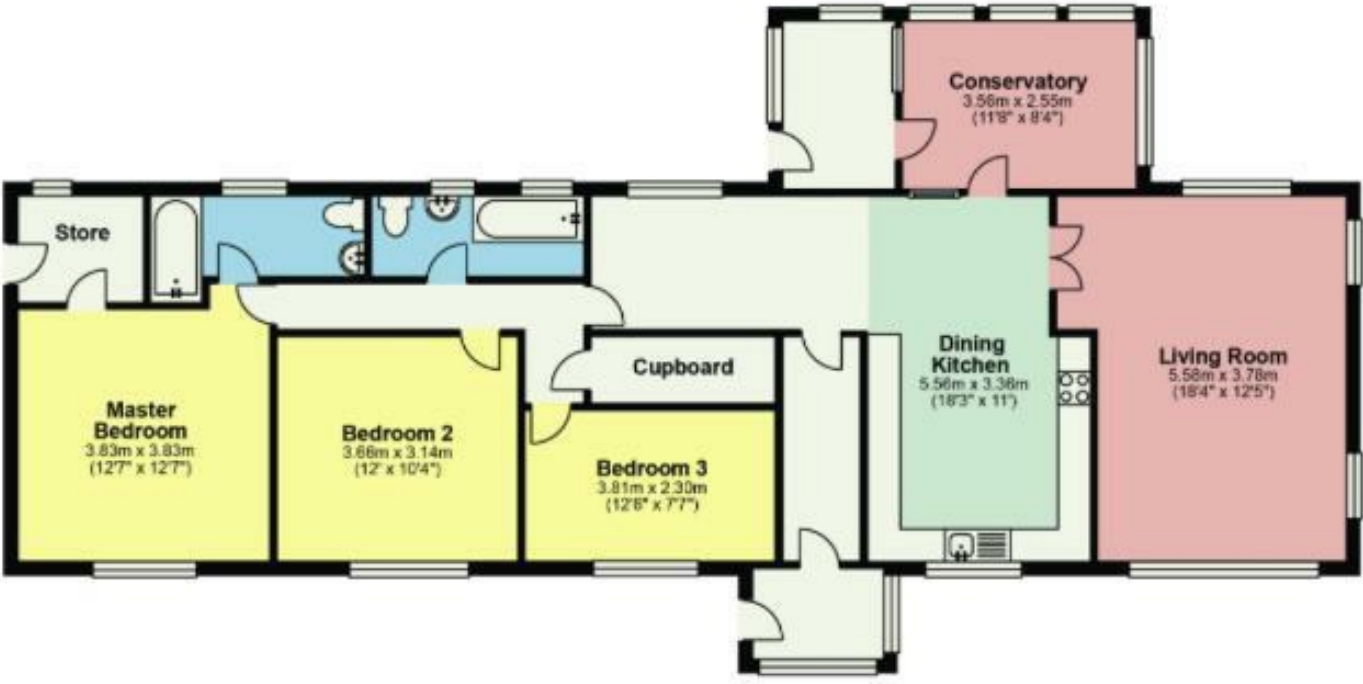
## Directions



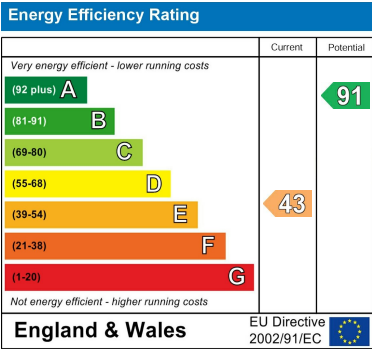




Floor plans



Total area: approx. 125.5 sq. metres (1350.4 sq. feet)  
For illustrative purposes only. Not to scale. REF



Unit 3 Mason Court Gillan Way, Penrith 40 Business Park  
Penrith  
Cumbria  
CA11 9GR  
01768881111  
Sales@brittonestates.co.uk  
www.brittonestates.co.uk