



Ostlers Barn | Hesket Newmarket | Wigton | CA7 8JN

Guide Price £320,000



david britton
ESTATES

Key features

- Wonderful 2 bedroom Barn Conversion
- Lake District National Park
- Wonderful original features, combined with modern styling
- Luxurious Fixtures and Fittings throughout
- Bespoke fitted kitchen
- Spacious lounge/dining room
- Impressive Master bedroom with ensuite and exposed beams
- Further double bedroom and stylish family Bathroom
- Terrace to the front
- No Onward Chain

Description

This stunning and luxurious 2 bedroom barn conversion is ideally located on the edge of the popular village of Hesketh Newmarket in the Lake District National Park. Renovated to an exacting standard and previously used as a high-end holiday let, this property would make a lovely main residence or ideal for those looking to generate an income.

This stunning and luxurious 2 bedroom barn conversion is ideally located on the edge of the popular village of Hesketh Newmarket in the Lake District National Park. Renovated to an exacting standard and previously used as a high-end holiday let, this property would make a lovely main residence or ideal for those looking to generate an income.

Internally it is deceptively spacious and is filled with a superb mix of traditional exposed stone, wonderful, beamed ceilings and contemporary features. At the heart of the home is a high specification modern kitchen, under floor heating, bespoke cabinetry from a locally renowned supplier and a stunning granite and oak work surface/dining peninsula.

Leading from the kitchen is a light filled and generous lounge/dining room with oak flooring and oak staircase, feature fireplace and coach house style window looking on to the terrace to the front. On the first floor, many of the original features have been retained with an impressive vaulted beamed ceiling in the master bedroom suite and a beautiful en-suite bathroom with walk-in shower and a heated tiled floor.

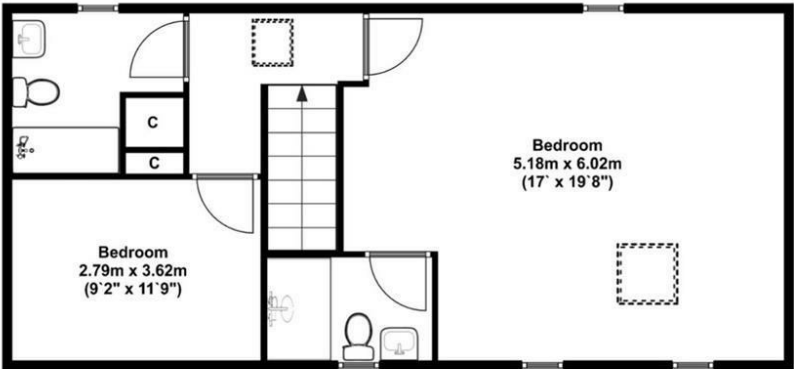
The second superking-size bedroom is served by a contemporary family bathroom with under floor heating and a powerful shower over the bath. Externally Ostlers Barn sits within a courtyard setting with a small terrace area to the front, perfect for a bistro table and chairs, to enjoy alfresco dining.

Located on the edge of Hesketh Newmarket, nestled within the beautifully Northern Fells, with access to some lovely walks, lakes and tarns. The village itself has a wonderful community and ideal for those looking for an idyllic retreat in the Lake District National Park. Excellent amenities are available close-by with the market towns of Keswick and Penrith, just a short distance away.

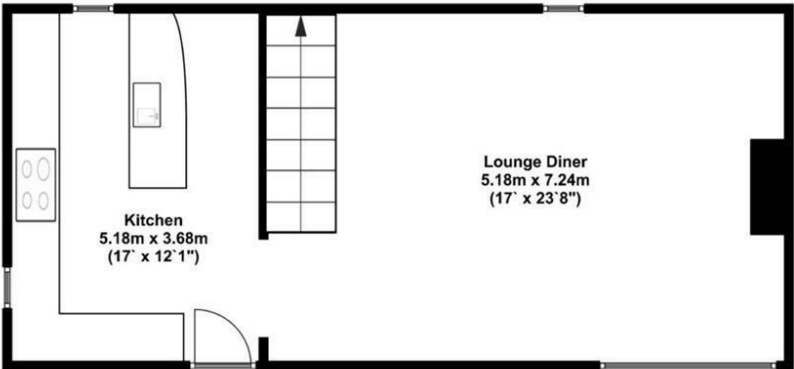




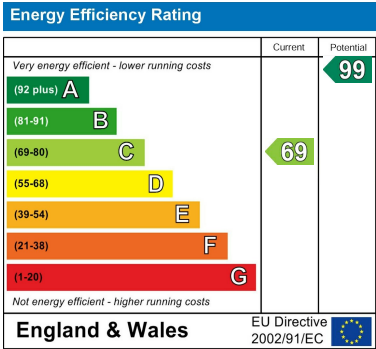
Floor plans



First Floor
Approx 60.00 Sq meters (646.00 Sq feet).



Ground Floor
Approx 60.00 Sq meters (646.00 Sq feet).



Unit 3 Mason Court Gillan Way, Penrith 40 Business Park
Penrith
Cumbria
CA11 9GR
01768881111
Sales@brittonestates.co.uk
www.brittonestates.co.uk