



Thanet Well Lodge Retreat | Hutton Roof | Penrith | CA11 0XX

Guide Price £89,950



**david britton**  
ESTATES

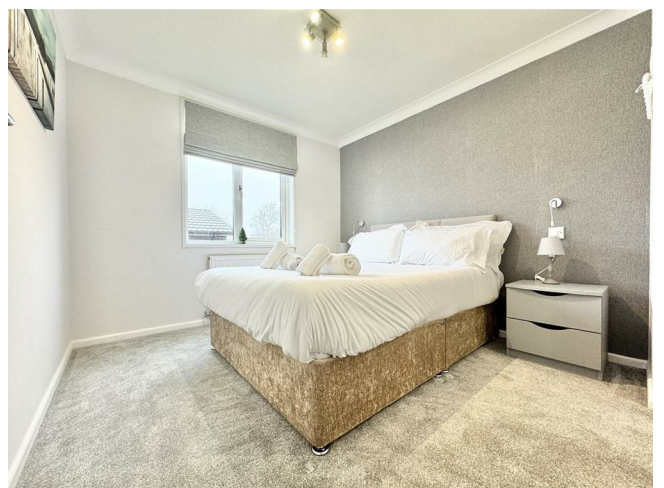


## Key features

- 2 bedroom Detached Lodge
- Driveway Parking to the side
- Large living/dining/open plan kitchen area
- Entrance vestibule
- Storage cupboard
- 2 bedrooms
- 1 en-suite
- Bathroom
- Seating area
- Hot tub

## Description

Found just on the edge of the Lake District National Park is this immaculately presented luxurious 2 bedroom holiday lodge.

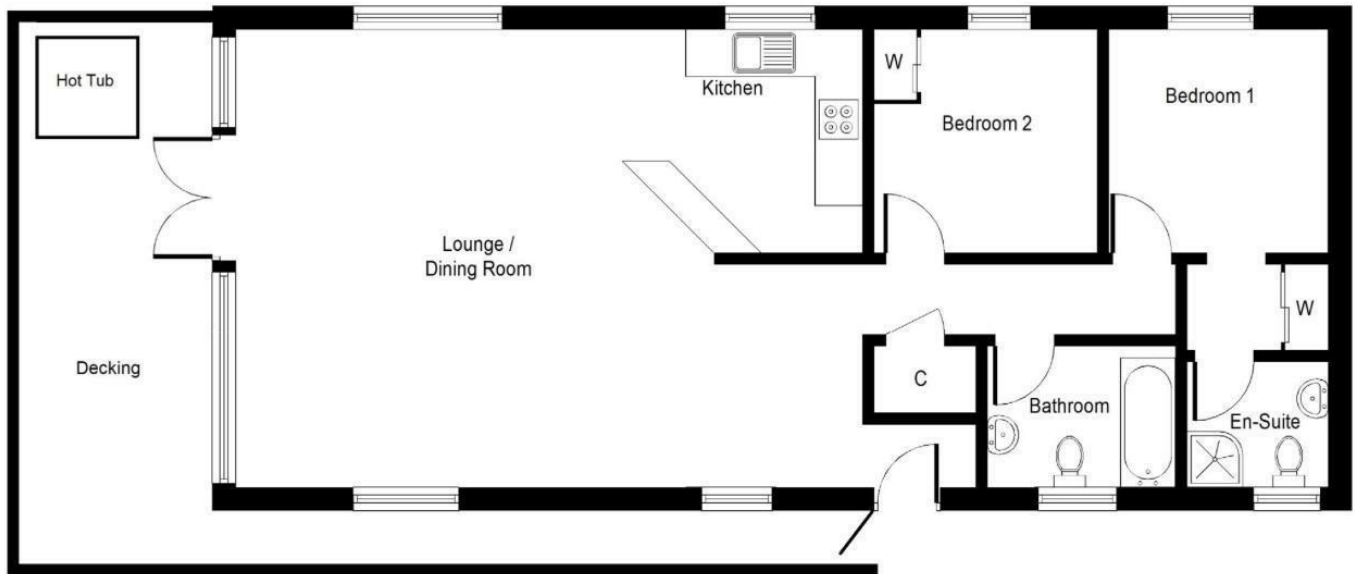


## Directions





# Floor plans



**Ground Floor**  
**Approximate Floor Area**  
**878 Sq. ft.**  
**(81.6 Sq. m.)**

Whilst every attempt has been made to ensure the accuracy of the floor plan contained here, measurements of doors, windows, rooms and any other items are approximate and no responsibility is taken for any error, omission, or mis-statement. This plan is for illustrative purposes only and should be used as such by any prospective purchaser or tenant. The services, systems and appliances shown have not been tested and no guarantee as to their operability or efficiency can be given.  
 Copyright V360 Ltd 2020 | www.houseviz.com

Energy Efficiency Rating		
	Current	Potential
<i>Very energy efficient - lower running costs</i>		
(92 plus) <b>A</b>		
(81-91) <b>B</b>		
(69-80) <b>C</b>		
(55-68) <b>D</b>		
(39-54) <b>E</b>		
(21-38) <b>F</b>		
(1-20) <b>G</b>		
<i>Not energy efficient - higher running costs</i>		
<b>England &amp; Wales</b>	EU Directive 2002/91/EC	



Unit 3 Mason Court Gillan Way, Penrith 40 Business Park  
 Penrith  
 Cumbria  
 CA11 9GR  
 01768881111  
 Sales@brittonestates.co.uk  
 www.brittonestates.co.uk