



Peter Gate | Cotehill | Carlisle | CA4 0AF

Guide Price £750,000



david britton
ESTATES

Key features

- Stunning, architect designed detached home
- Impressive and contemporary interior
- Panoramic Views across to the Pennine Fells
- 4 double bedrooms
- 4 stylish ensuites
- Open plan living/dining/kitchen
- Balcony and covered terraces
- Gardens to the front and rear
- Ample parking to the front
- Indoor/outdoor living spaces

Description

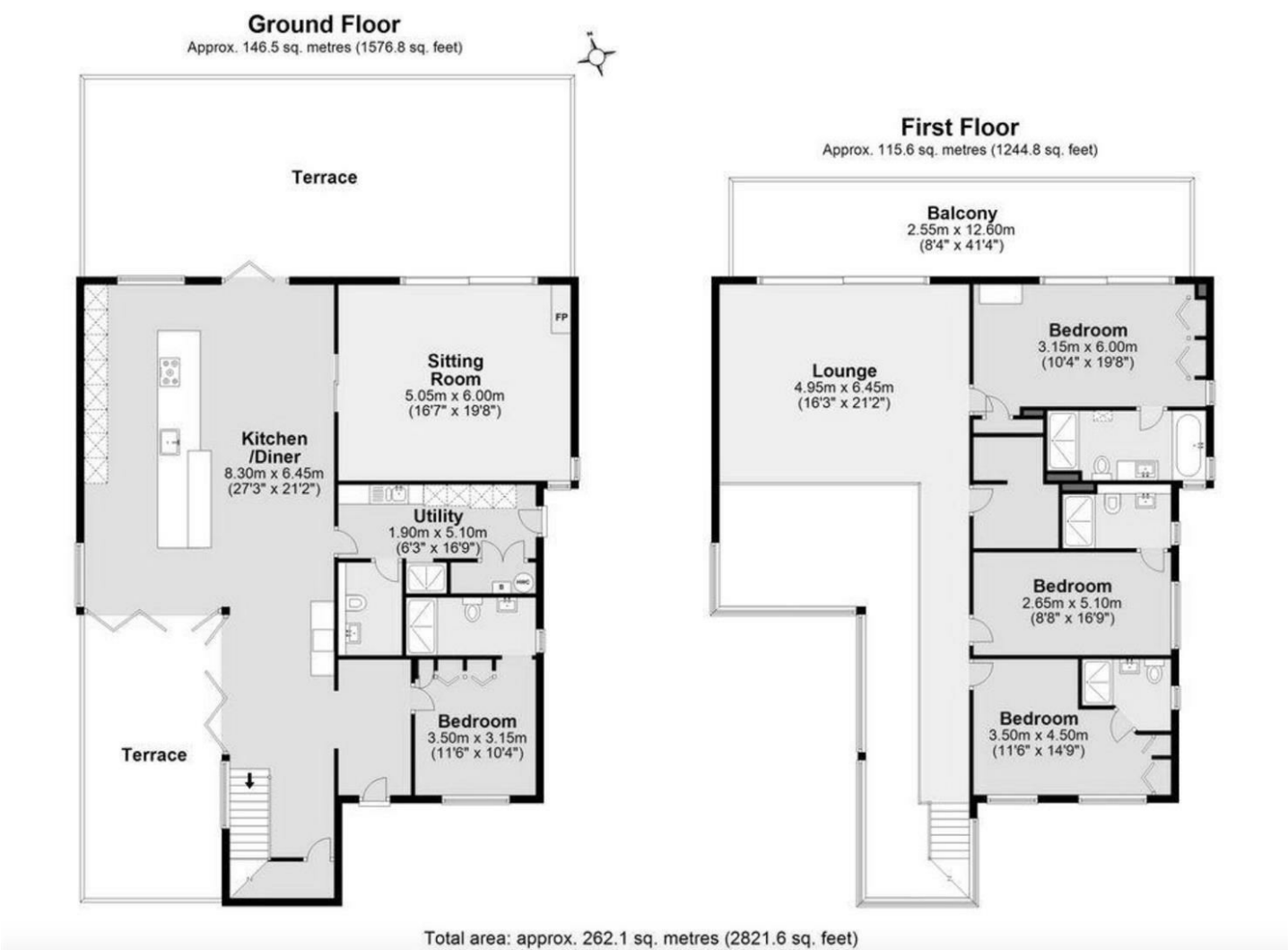
WOW, this stunning, architecturally designed home enjoys breath-taking panoramic views across to the Pennine Fells. Offering around 3000 sqft of living accommodation, this incredible property has some magnificent spaces both internally and externally. Benefitting from a recently added garage, this is a wonderful family home located just a short distance from the City of Carlisle.

Directions





Floor plans



Energy Efficiency Rating		
	Current	Potential
Very energy efficient - lower running costs		
(92 plus) A		95
(81-91) B	82	
(69-80) C		
(55-68) D		
(39-54) E		
(21-38) F		
(1-20) G		
Not energy efficient - higher running costs		
England & Wales		EU Directive 2002/91/EC



Unit 3 Mason Court Gillan Way, Penrith 40 Business Park
Penrith
Cumbria
CA11 9GR
01768881111
Sales@brittonestates.co.uk
www.brittonestates.co.uk