



Swallows Rise | Tirril | Penrith | CA10 2JN

Guide Price £350,000



**david britton**  
ESTATES



## Key features

- Stunning New Build Home
- 3 bedrooms
- Completed to a luxury standard
- Build by locally renowned builder
- Three Bedroom; master with ensuite
- Open plan dining kitchen
- Garden & Off road Parking
- Excellent village community
- Close to Ullswater & Pooley Bridge
- 10 Year Build warranty

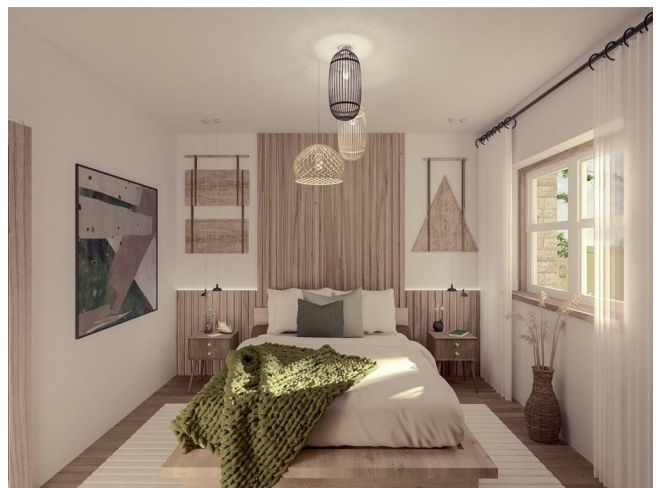
## Description

\* Plot 6 \* Discover the perfect blend of luxury, location, and style in the first phase of Stonewood Homes' captivating new development in Tirril, nestled on the edge of the stunning Lake District National Park. Prepare to be impressed by the thoughtful craftsmanship of this respected local developer, who has once again delivered homes that radiate timeless charm and exceptional quality.

With only a small number of properties available in this exclusive first phase, early reservation is essential to secure your dream home in this sought-after development.

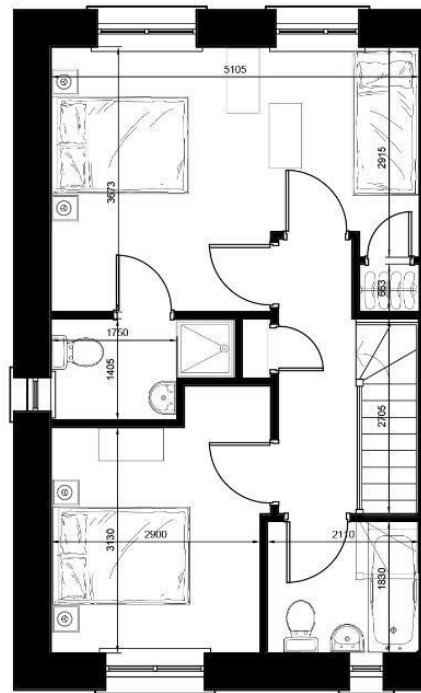
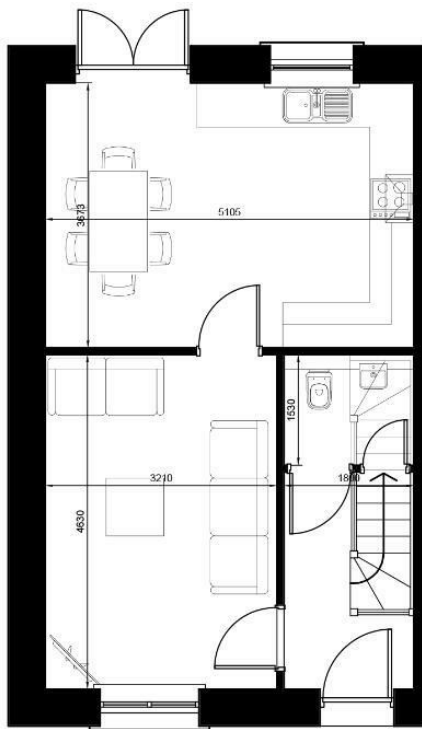
Please note that these properties are currently under construction, and site visits are available by appointment only.

## Directions





## Floor plans



Unit 3 Mason Court Gillan Way, Penrith 40 Business Park

Penrith

Cumbria

CA11 9GR

01768881111

[Sales@brittonestates.co.uk](mailto:Sales@brittonestates.co.uk)

[www.brittonestates.co.uk](http://www.brittonestates.co.uk)