



| | Irthlington | CA6 4NF

Price Guide £375,000



**david britton**  
ESTATES



## Key features

- Five bedroom detached house
- One reception room
- Large modern kitchen
- En-suite shower room
- Family bathroom
- Private garden with decking area
- Convenient location to east of the city
- Ample parking for up to several vehicles

## Description

A wonderful 5 bedroom detached home set over 3 floors in Ruleholme between Carlisle and Bampton

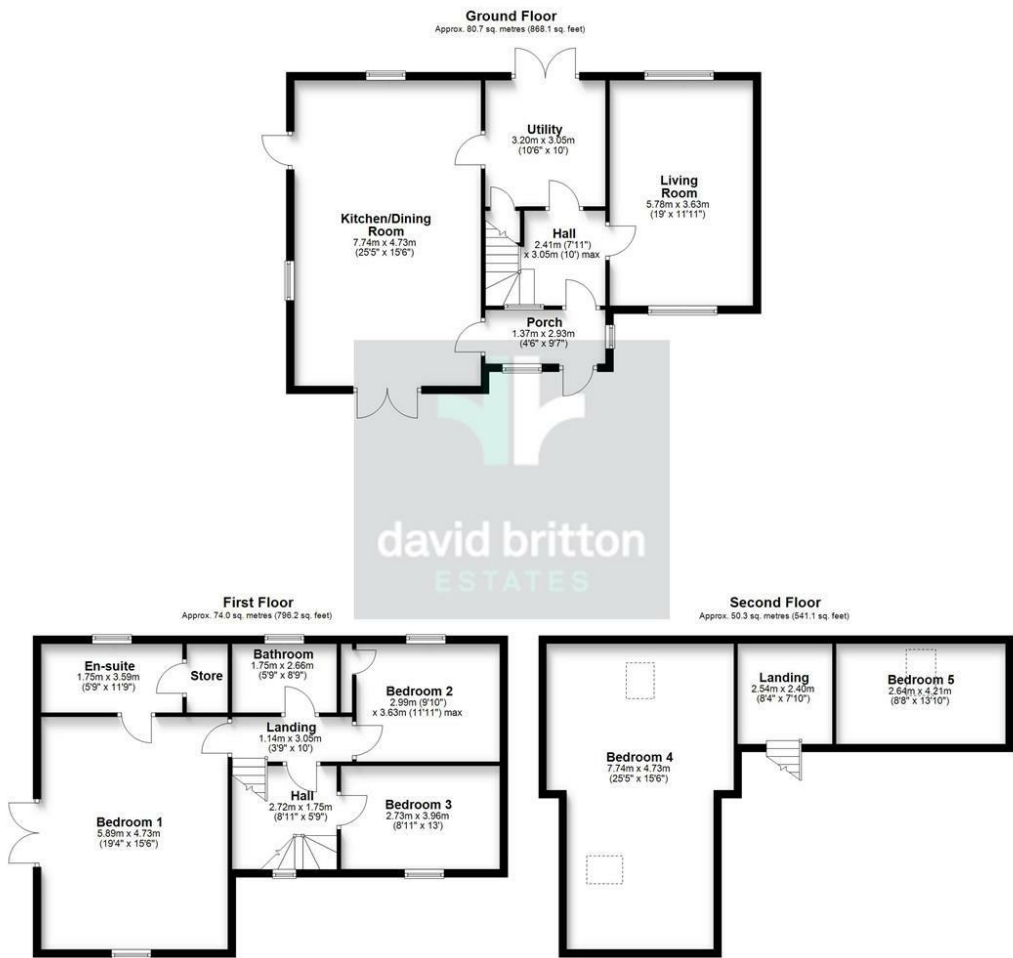
## Directions



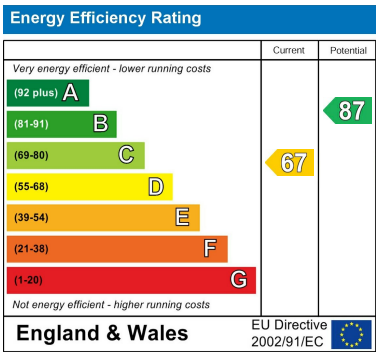




Floor plans



Romanway, Ruleholme



Unit 3 Mason Court Gillan Way, Penrith 40 Business Park  
Penrith  
Cumbria  
CA11 9GR  
01768881111  
Sales@brittonestates.co.uk  
www.brittonestates.co.uk