



Ash Gardens | Hackthorpe | Penrith | CA10 2FU

Guide Price £325,000



**david britton**  
ESTATES



## Key features

- Three Bedroom Semi Detached Home
- Exclusive New Development built in 2023
- Offered with no onward chain.
- Luxurious specification with upgrades
- Large, sociable open plan kitchen/dining room
- Three bedrooms, master with ensuite
- Family bathroom and cloakroom
- Large Garden with ample parking for 2/3 cars
- Desirable village location close to Penrith
- Excellent transport links to A6 and M6

## Description

This modern 3 bedroom semi-detached house is a gem waiting to be discovered! Sitting on the new and exclusive Stoneswood Homes Development in Hackthorpe and boasting a spacious 1,023 sq ft layout, this modern home offers a perfect blend of luxury, style and comfort. \*\* NO ONWARD CHAIN\*\*

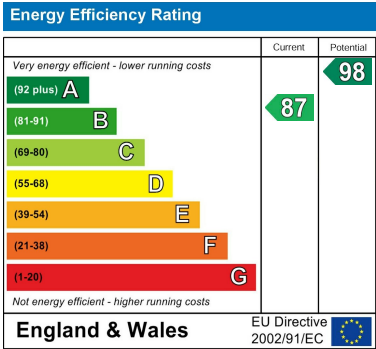
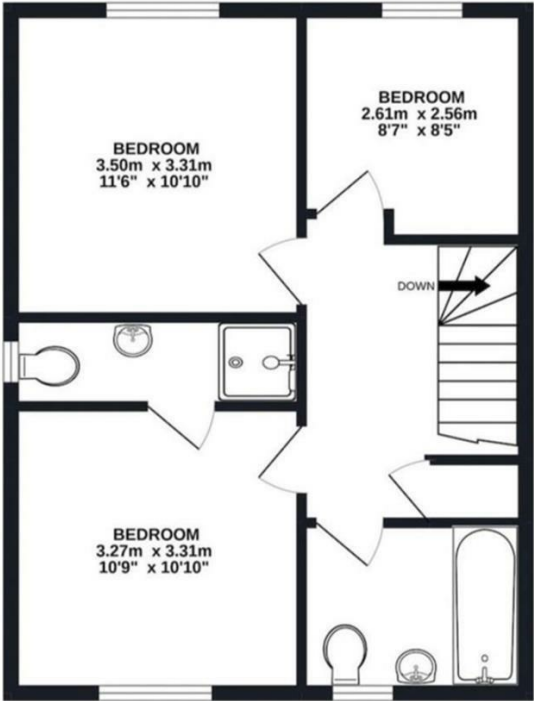
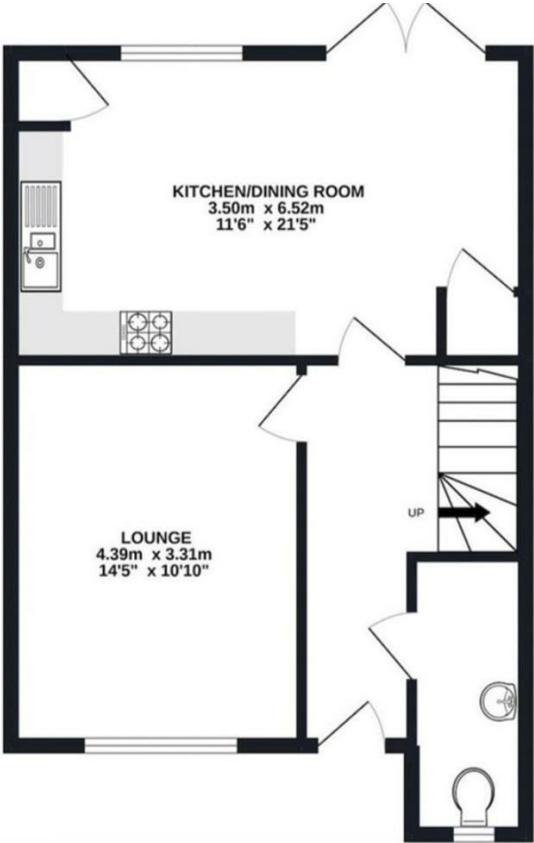
## Directions







Floor plans



Unit 3 Mason Court Gillan Way, Penrith 40 Business Park  
Penrith  
Cumbria  
CA11 9GR  
01768881111  
Sales@brittonestates.co.uk  
www.brittonestates.co.uk