



| Ellonby | Penrith | CA11 9SJ

Guide Price £595,000



**david britton**  
ESTATES



## Key features

- No Onward Chain
- Traditional 3 bedroom home on 0.7 acre plot
- Adjoining workshop/barn
- Further development potential (STP)
- Many original character features
- Gated driveway with ample parking
- Wonderful open countryside views
- Desirable village location close to Skelton and Greystoke
- Workshop ideal for studio, gallery, working from home space
- Excellent transport links, close to Lake District National Park

## Description

Spacious and traditional stone-built 3 bedroom home sitting in 0.7 acre plot with an adjoining barn, enjoying stunning panoramic views across open countryside. Ideal for those looking for a workshop, barn, working from home or studio space!

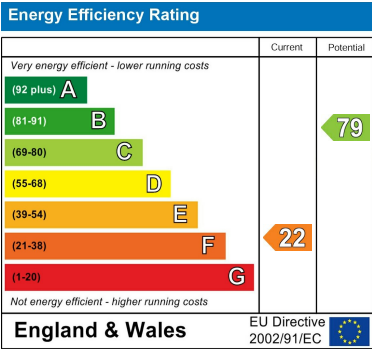
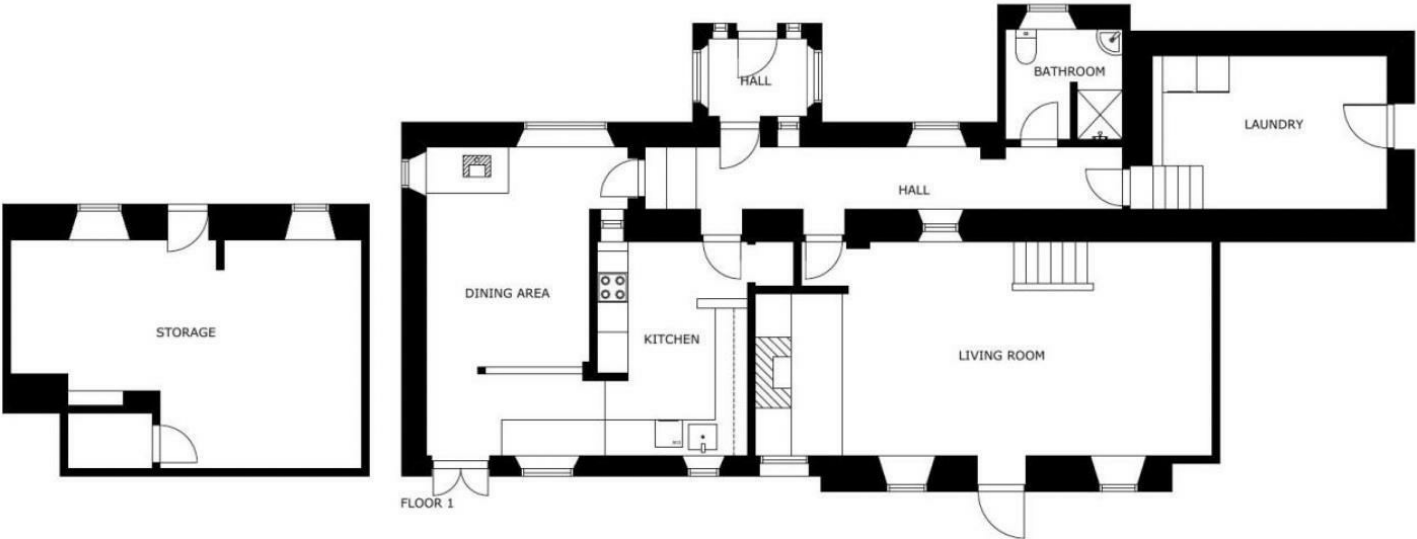
## Directions







Floor plans



Unit 3 Mason Court Gillan Way, Penrith 40 Business Park  
Penrith  
Cumbria  
CA11 9GR  
01768881111  
Sales@brittonestates.co.uk  
www.brittonestates.co.uk