



Swallows Rise | Sockbridge | Penrith | CA10 2JN

Guide Price £895,000



**david britton**  
ESTATES

## Key features

- Detached 5 bedroom home with incredible views
- Arranged over 3 floors
- New Build Home
- High Quality Fixtures and Fittings
- Luxurious Specification
- Close to Pooley Bridge & Ullswater Lake
- Off road Parking & Garden
- Detached Double garage
- Excellent local community
- Edge of Lake District National Park

## Description

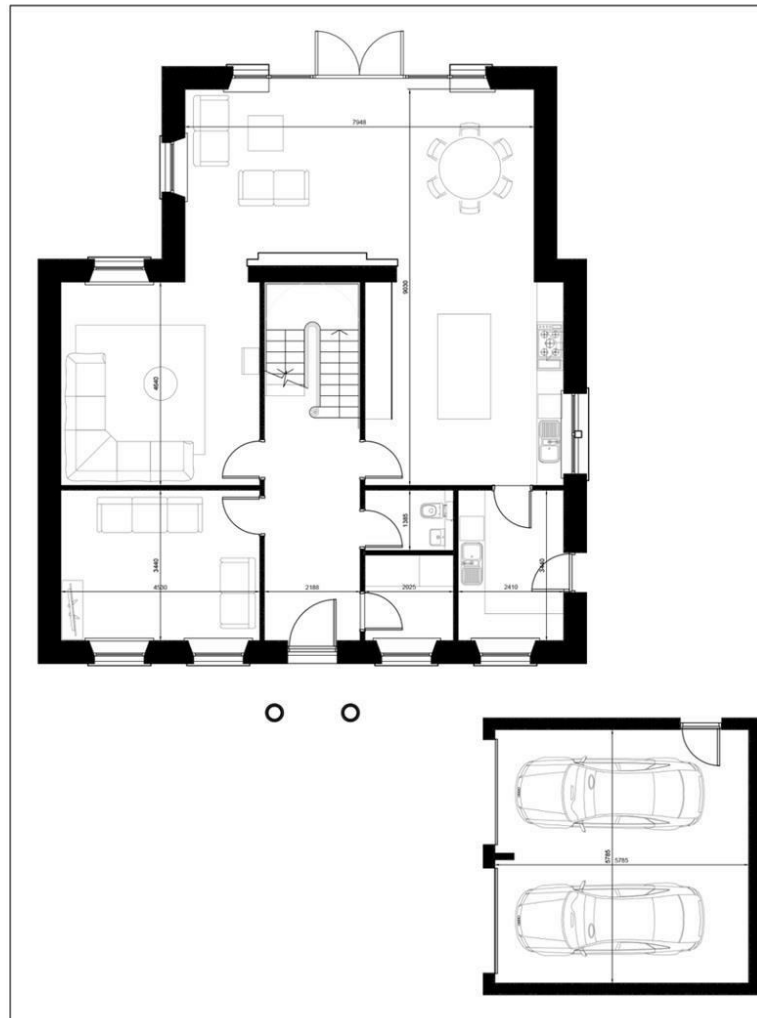
\* PLOT 19\* Luxury, location and style is the best way to explain these stunning 5 bedroom Georgian style houses in Sockbridge, Tirril. Stoneswood Homes have again produced a development of houses that not only stand out for their timeless look that are built with local sandstone but that ooze high end quality with a finish that a house like this deserves.

## Directions





## Floor plans



Unit 3 Mason Court Gillan Way, Penrith 40 Business Park

Penrith

## Cumbria

CA11 9GR

01768881111

Sales@brittonstates.co.uk

[www.brittonstates.co.uk](http://www.brittonstates.co.uk)