



14 Swallows Rise | Sockbridge | Penrith | CA10 2JN

Guide Price £895,000



david britton
ESTATES

Key features

- Detached 5 bedroom home with incredible views
- Arranged over 3 floors
- New Build Home
- High Quality Fixtures and Fittings
- Luxurious Specification
- Close to Pooley Bridge & Ullswater Lake
- Off road Parking & Garden
- Detached Double garage
- Excellent local community
- Edge of Lake District National Park

Description

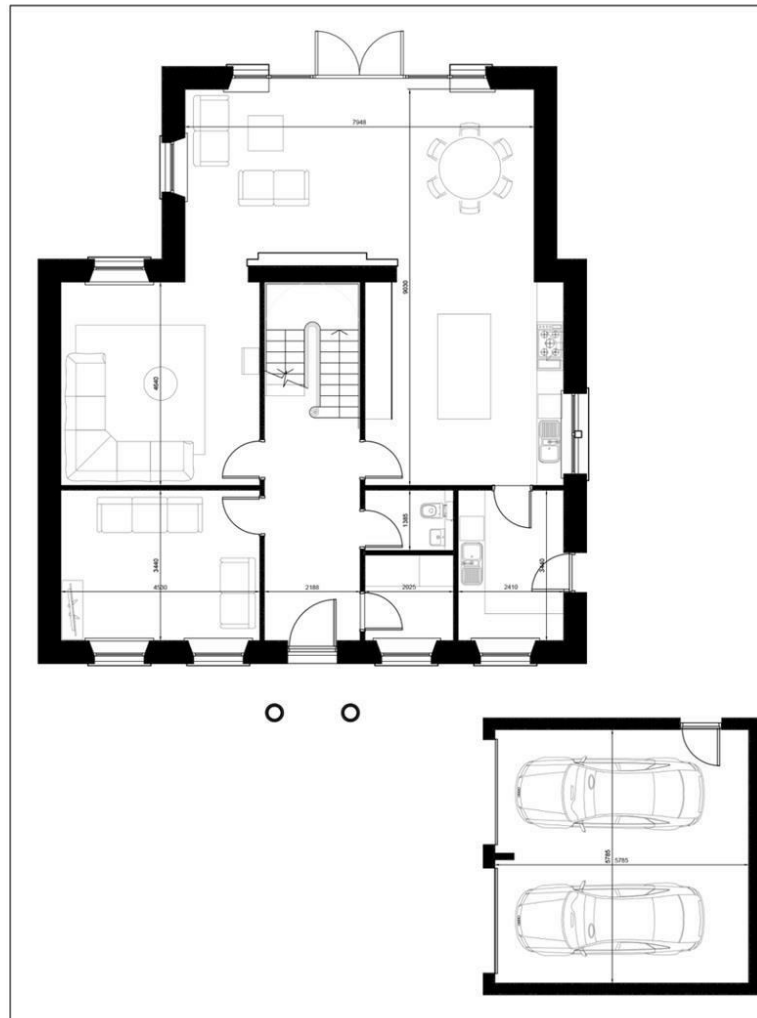
Luxury, location and style is the best way to explain these stunning 5 bedroom Georgian style houses in Sockbridge, Tirril. Stoneswood Homes have again produced a development of houses that not only stand out for their timeless look that are built with local sandstone but that ooze high end quality with a finish that a house like this deserves.

Directions





Floor plans



Unit 3 Mason Court Gillan Way, Penrith 40 Business Park

Penrith

Cumbria

CA11 9GR

01768881111

Sales@brittonstates.co.uk

www.brittonstates.co.uk