



Plot 18 15 Swallows Rise | Sockbridge | Penrith | CA10 2JN

Guide Price £895,000



**david britton**  
ESTATES





## Key Features

- Detached 5 bedroom home with incredible views
- Arranged over 3 floors
- New Build Home
- High Quality Fixtures and Fittings
- Luxurious Specification
- Close to Pooley Bridge & Ullswater Lake
- Off road Parking & Garden
- Detached Double garage
- Excellent local community
- Edge of Lake District National Park

## Summary

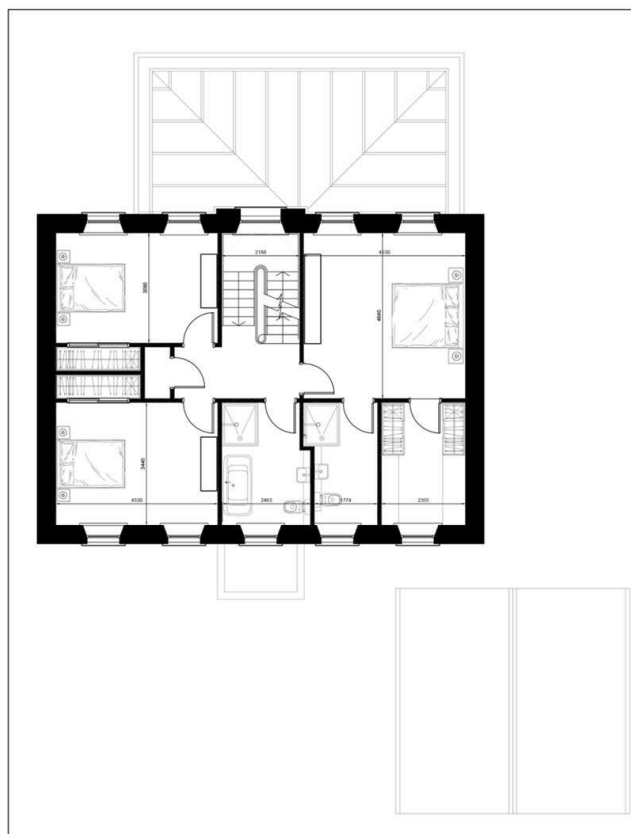
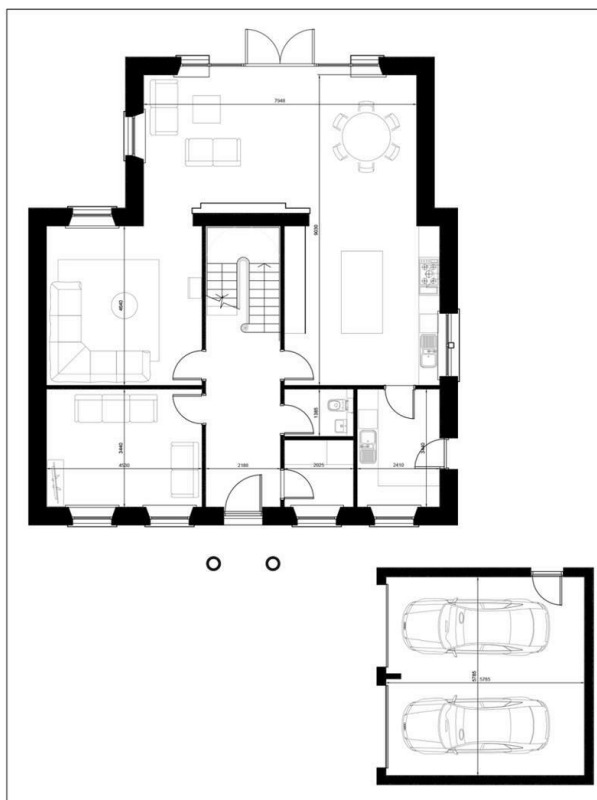
\* PLOT 18 \* Luxury, location and style is the best way to explain these stunning 5 bedroom Georgian style houses in Sockbridge, Tirril. Stoneswood Homes have again produced a development of houses that not only stand out for their timeless look that are built with local sandstone but that ooze high end quality with a finish that a house like this deserves.







## Floor plans



COUNCIL TAX BAND - EdenNew Build

### DISCLAIMER

These particulars, whilst believed to be accurate are set out as a general guideline and do not constitute any part of an offer or contract. Intending Purchasers should not rely on them as statements of representation of fact but must satisfy themselves by inspection or otherwise as to their accuracy. The services, systems, and appliances shown may not have been tested and has no guarantee as to their operability or efficiency can be given. All floor plans are created as a guide to the lay out of the property and should not be considered as a true depiction of any property and constitutes no part of a legal contract.



Unit 3 Mason Court Gillan Way, Penrith 40 Business Park

Penrith

Cumbria

CA11 9GR

01768881111

[Sales@brittonestates.co.uk](mailto:Sales@brittonestates.co.uk)

[www.brittonestates.co.uk](http://www.brittonestates.co.uk)