



42 Main Road | | Windermere | LA23 1DY

Guide Price £165,000



david britton
ESTATES

Key features

- 2 bedroom Apartment in town centre
- Windermere, Lake District National Park
- Second Floor
- Around 740 sq.ft of accommodation
- Rooftop views
- 2 Double bedrooms
- Light and Bright Living spaces
- Ideal for First time Buyer/Second Home
- New roof and partial new double glazing
- Town centre location with excellent amenities

Description

FANTASTIC 2 BEDROOM SECOND FLOOR APARTMENT IN THE HEART OF WINDERMERE TOWN CENTRE!



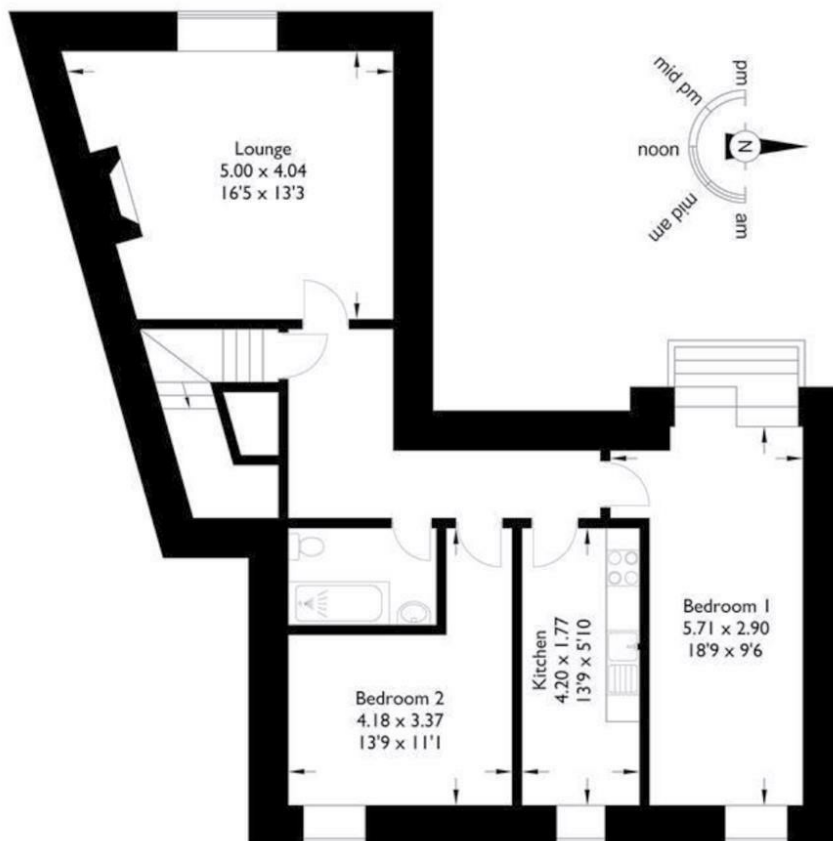
Directions



Floor plans

Flat 2, 42 Main Road

Approximate Gross Internal Area : 68.77 sq m / 740.23 sq ft



Energy Efficiency Rating		
	Current	Potential
Very energy efficient - lower running costs		
(92 plus) A		
(81-91) B		80
(69-80) C		
(55-68) D	50	
(39-54) E		
(21-38) F		
(1-20) G		
Not energy efficient - higher running costs		
England & Wales	EU Directive 2002/91/EC	



Unit 3 Mason Court Gillan Way, Penrith 40 Business Park
 Penrith
 Cumbria
 CA11 9GR
 01768881111
 Sales@brittonestates.co.uk
 www.brittonestates.co.uk