



Milestone Close | Waverton | Wigton | CA7 0AE

Guide Price £385,000



david britton
ESTATES

Key features

- Luxury New Build Home
- Built by locally renowned Lattimer Homes
- 3 bedroomed Bungalow
- Around 1200 sq ft of living accommodation
- Luxurious Specification
- Stunning views to the rear
- Gardens to front and rear
- Detached Single Garage
- Driveway parking
- Close to Wigton, Carlisle, Lake District and Solway Coast

Description

5 MILESTONE CLOSE – BRAND NEW BUILD
- THREE BEDROOM DETACHED
BUNGALOW WITH LUXURY, QUALITY FINISH
& ATTENTION TO DETAIL BUILT BY
LATTIMER HOMES!

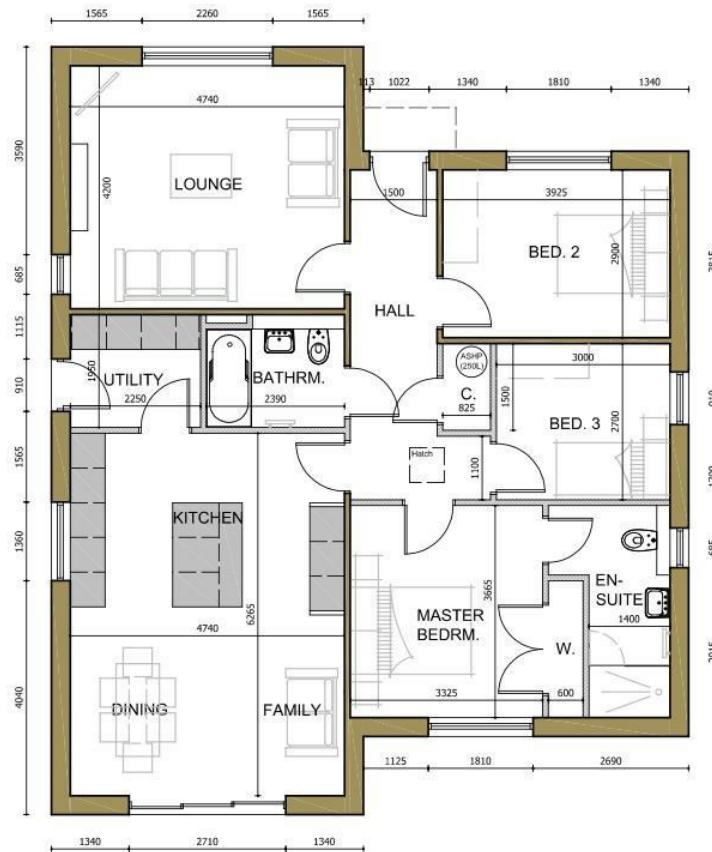
****Viewings strictly by appointment only****

Directions





Floor plans



FLOOR PLAN

113.00m² G.I.A.
(1216 sq.ft.)



Unit 3 Mason Court Gillan Way, Penrith 40 Business Park

Penrith

Cumbria

CA11 9GR

01768881111

Sales@brittonestates.co.uk

www.brittonestates.co.uk