



Milestone Close | Waverton | Wigton | CA7 0AE

Guide Price £595,000



david britton
ESTATES

Key features

- Luxury New build Home
- Built by locally renowned Lattimer Homes
- 4 bedroom detached home
- Around 2000 sq ft of living accommodation
- Luxurious Specification
- Stunning views to the rear
- Gardens to front and rear
- Integral Garage
- Driveway parking
- Close to Wigton, Carlisle, Lake District and Solway Coast

Description

4 MILESTONE CLOSE – BRAND NEW BUILD
FOUR BEDROOM DETACHED HOME WITH
LUXURY, QUALITY FINISH & ATTENTION TO
DETAIL BUILT BY LATTIMER HOMES!

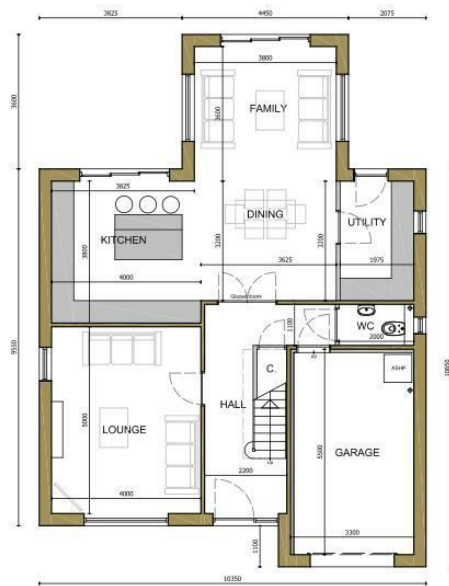
****Viewings strictly by appointment only****

Directions





Floor plans



GF PLAN

84.71m² G.I.A. +
garage @ 19.25m².

TOTAL G.I.A. - 188.35m²
(2027 sq. ft.) plus garage



FF PLAN

103.64m² G.I.A.



Unit 3 Mason Court Gillan Way, Penrith 40 Business Park

Penrith

Cumbria

CA11 9GR

01768881111

Sales@brittonestates.co.uk

www.brittonestates.co.uk